



Ryhope Road, London, N11 1DP

£930,000



A stylish and modern semi-detached house, extended, modernised, and decorated to the highest of standards that is purely exquisite.

This three-bedroom, three-bathroom property with a fully functional garden house is a masterpiece in design and quality, you will be wonderfully impressed. The ground floor boasting superb natural light further enhanced by the layout design includes a separate reception area, through lounge with a beautifully designed fully integrated kitchen.

Every aspect of the ground floor has been devised to provide wonderful storage, a WC, kitchen utility room with underfloor heating throughout. The finishes including the hard wooden flooring really does make this a work of art experience.

Access to the garden via glass sliding, floor to ceiling doors takes you onto the covered patio area leading to the fantastic garden house with fully integrated kitchen, shower room, office & gym area.

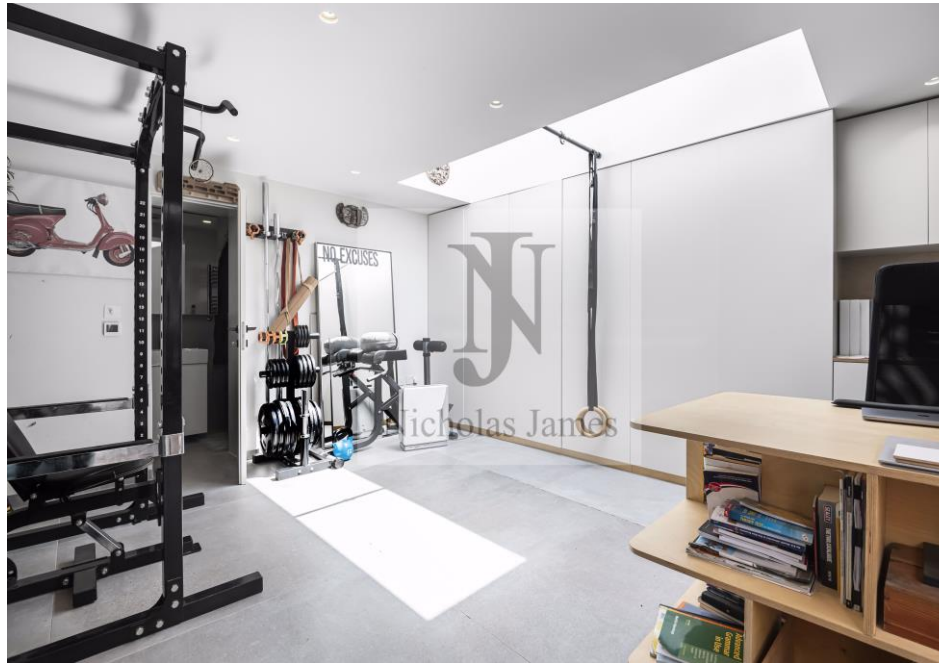
The first-floor hosts two super large double bedrooms, one of which includes an en-suit, a sizable four-piece family bathroom completed the rooms on this level.

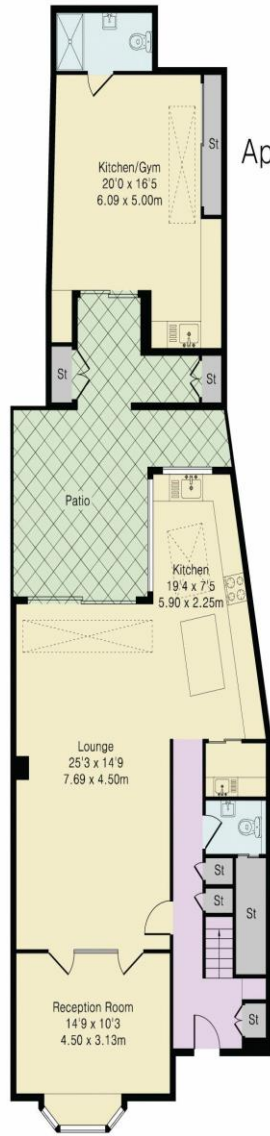
On the upper floor you will find another large double bedroom, with walk-in wardrobe & en-suit. Glass sliding doors leading to its own private balcony overlooking the garden

The exterior has not been spared, with K-rendering, darkened framed double-glazed windows, with off street parking for two cars.

We promise you will not fail to be impressed!

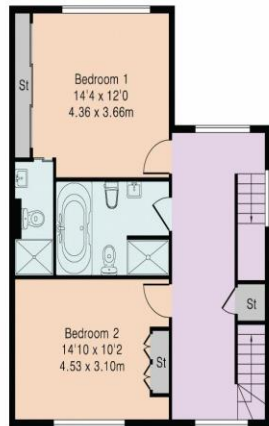
Additional points: -Under floor heating on each floor and gym area -Electric black out blinds -CCTV and smart entry-phone system -Electric car charger -Fitted, bespoke furniture - Water filtration and softener.





Ground Floor

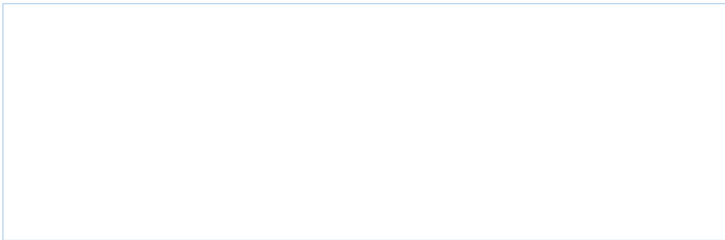
Approximate Gross Internal Area 2206 sq ft – 205 sq m  
 Ground Floor Area 1252 sq ft – 116 sq m  
 First Floor Area 631 sq ft – 59 sq m  
 Top Floor Area 323 sq ft – 30 sq m



First Floor



Top Floor



Nicholas James

*“Honesty is the only investment that never fails”*

Tel: 020 8886 9462  
 34 High Street Southgate London Greater London N14 6EE  
 info@njstates.co.uk  
 www.njstates.co.uk

All details including floorplans are for representation purposes only and do not constitute a contract or a warranty. Whilst every effort has been made to ensure accuracy of descriptions and measurements, no responsibility is taken for errors, omissions and misstatements.



Although Pink Plan Ltd ensures the highest level of accuracy, measurements of doors, windows and rooms are approximate and no responsibility is taken for error, omission or misstatement. These plans are for representation purposes only as defined by RICS code of measuring practise. No guarantee is given on total square footage of the property within this plan. The figure icon is for initial guidance only and should not be relied on as a basis of valuation.



Nicholas James