



189 Boundary Road, London

London

Guide Price **£730,000**



189 Boundary Road

London, London

Charming 8-bed house in Walthamstow E17 presented by Birchills Estate Agents. Modern kitchen, through lounge, 3 floors with bedrooms and multiple showers. Low-maintenance garden, off-street parking. Contact Birchills for early viewing!

Council Tax band: TBD

EPC Energy Efficiency Rating: C

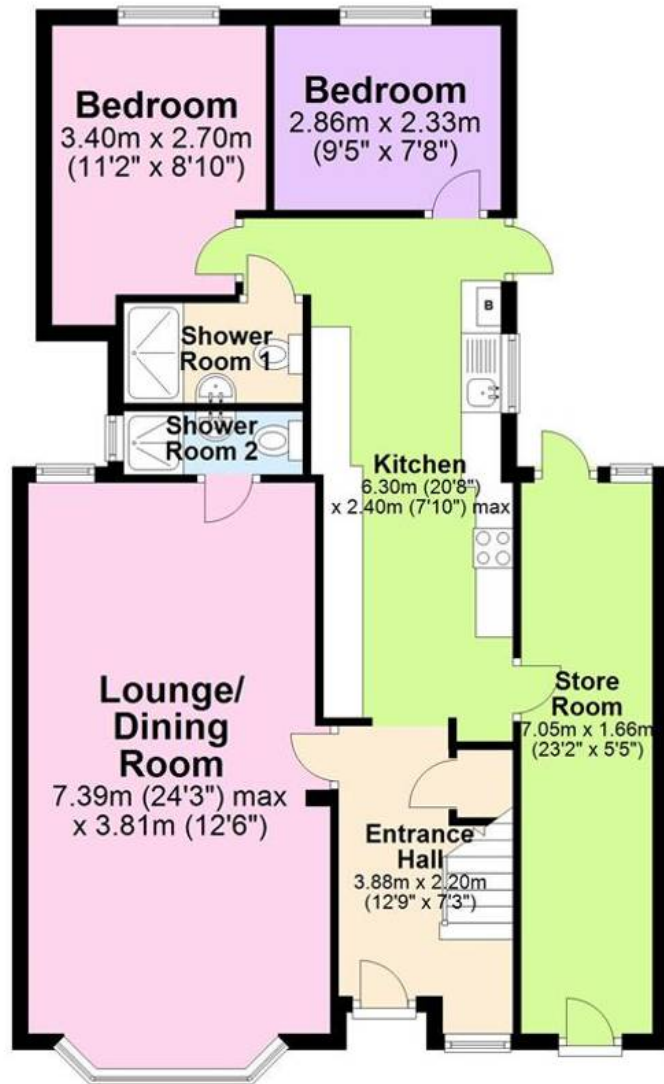
EPC Environmental Impact Rating: C

- Large Modern Kitchen & Breakfast Room
- Walthamstow Queens Road Tube Station
- Four Bathrooms
- 8 Bedrooms
- Two Reception Rooms
- St James Street Overground Train Station



Ground Floor

Approx. 85.5 sq. metres (919.9 sq. feet)



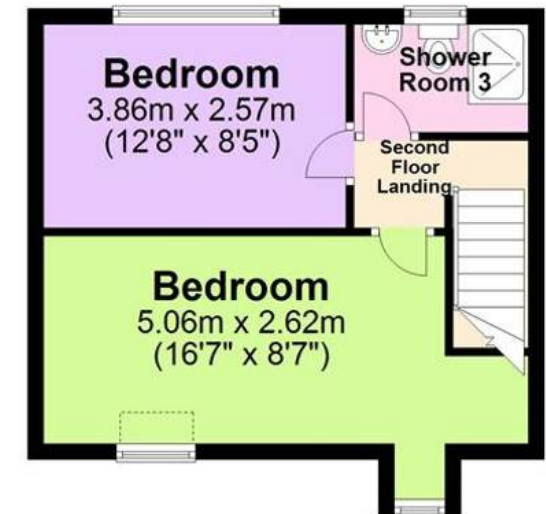
First Floor

Approx. 53.0 sq. metres (570.6 sq. feet)



Second Floor

Approx. 32.5 sq. metres (350.3 sq. feet)



Total area: approx. 171.0 sq. metres (1840.8 sq. feet)

Illustrations are for viewing purposes only. Measurements are not to scale. Property Total and Floor Totals are Internal figures only and do not include Garden, Balconies, Patios or Terraces if any shown. Drawn by SPG.
Plan produced using PlanUp.