

Whitehall Close, Chigwell IG7 6EQ

£3,000

PLEASE CHECKOUT OUR VIRTUAL TOUR OF THIS AMAZING HOUSE !

Birchills Estates Agents are proud to present, the rental market this stunning 4 bedroom house in Chigwell.

The ground floor of this lovely home boasts a large through lounge, kitchen with appliances along side a dining room and a downstairs shower room with wc.

The first floor offers 3 double bedrooms, single bedroom and a family bathroom with a separate shower cubicle.

To the rear of this house is a huge beautifully presented private garden and to the front there is driveway for off street parking and a garage for more secured parking.

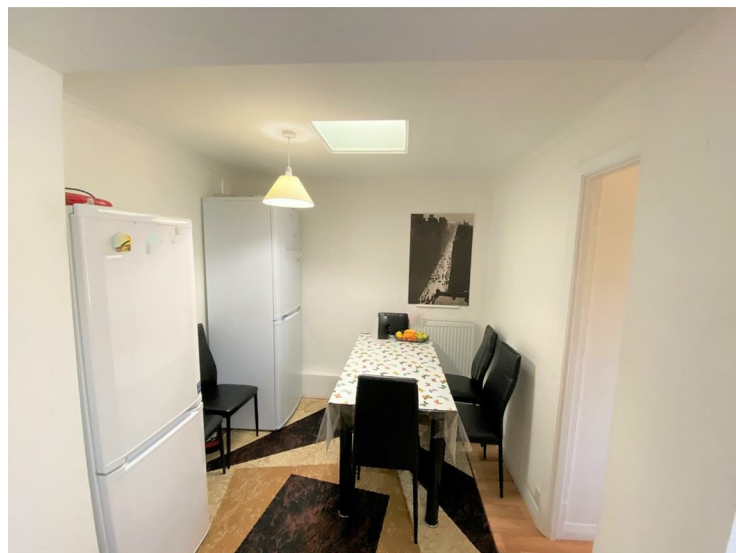
Please call Birchills office today to arrange an early viewing - we expect this home to let very quickly.

Whitehall Close, Chigwell IG7 6EQ

Through Lounge
26'6" x 10'9" (8.1 x 3.3)



Dining Room
7'10" x 7'6" (2.4 x 2.3)



Kitchen
12'9" x 7'10" (3.9 x 2.4)



Double Bedroom
13'9" x 7'2" (4.2 x 2.2)



Whitehall Close, Chigwell IG7 6EQ

Double Bedroom
12'9" x 9'10" (3.9 x 3)



Downstairs Shower Room
7'10" x 5'10" (2.4 x 1.8)



Bedroom
7'10" x 8'2" (2.4 x 2.5)



Family Bathroom
9'10" x 5'6" (3 x 1.7)



Entrance Hallway
14'9" x 7'10" (4.5 x 2.4)



Double Bedroom
14'5" x 10'9" (4.4 x 3.3)



Whitehall Close, Chigwell IG7 6EQ

Garage
15'8" x 7'6" (4.8 x 2.3)



Garden



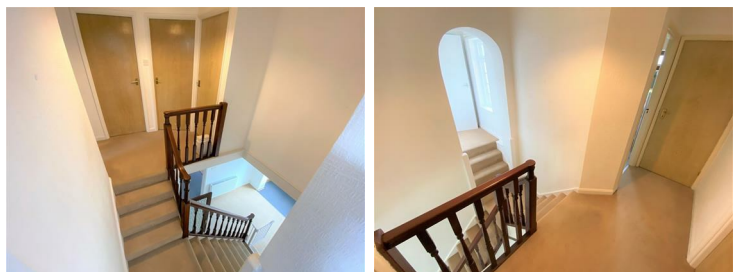
Upstairs Separate WC
5'2" x 2'11" (1.6 x 0.9)



Patio



Landing
14'5" x 12'9" (4.4 x 3.9)



Garden



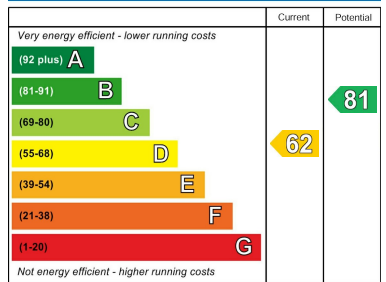
Back Garden Access

Whitehall Close, Chigwell IG7 6EQ



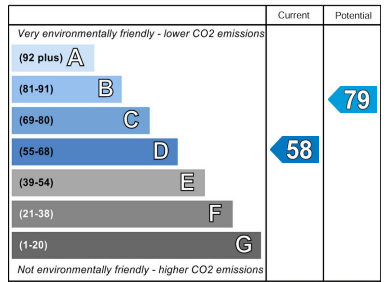


Energy Efficiency Rating



England & Wales EU Directive 2002/91/EC

Environmental Impact (CO₂) Rating



England & Wales EU Directive 2002/91/EC

