



Coventry Road, London E1 5RX

£2,400

Welcome to this charming flat on Coventry Road conveniently located within walking distance to both Bethnal Green Station and Whitechapel Station. This purpose-built property boasts a spacious 678 sq ft of living space, perfect for those looking for a comfortable and convenient home.

The flat features two generously sized double bedrooms, offering ample space for a growing family, guests, or a home office.

One of the highlights of this property is the separate living room, providing a dedicated space for unwinding after a long day. Step outside onto the balcony and enjoy a breath of fresh air while taking in the views of the surrounding neighbourhood.

Don't miss the opportunity to make this lovely flat your new home. Contact us today to arrange a viewing and envision the possibilities that await you at Coventry Road.

Coventry Road, London E1 5RX

Kitchen

10'9" x 6'6" (3.3 x 2)



Bathroom



Reception Room

19'8" x 11'1" (6 x 3.4)



WC



Bedroom 1

11'9" x 9'10" (3.6 x 3)



Bedroom 2

11'9" x 10'5" (3.6 x 3.2)

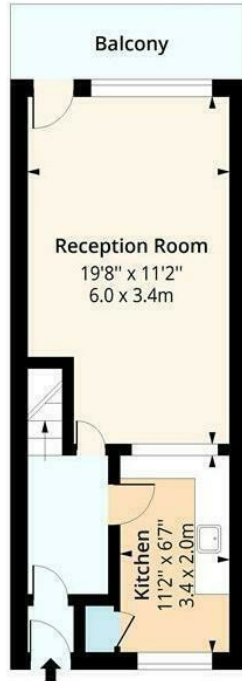


Coventry Road, London E1 5RX

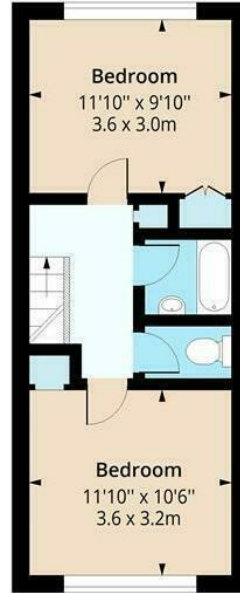


Orion House, E1

Approx. Gross Internal Area 724 Sq Ft - 67.26 Sq M



First Floor
Floor Area 362 Sq Ft - 33.63 Sq M



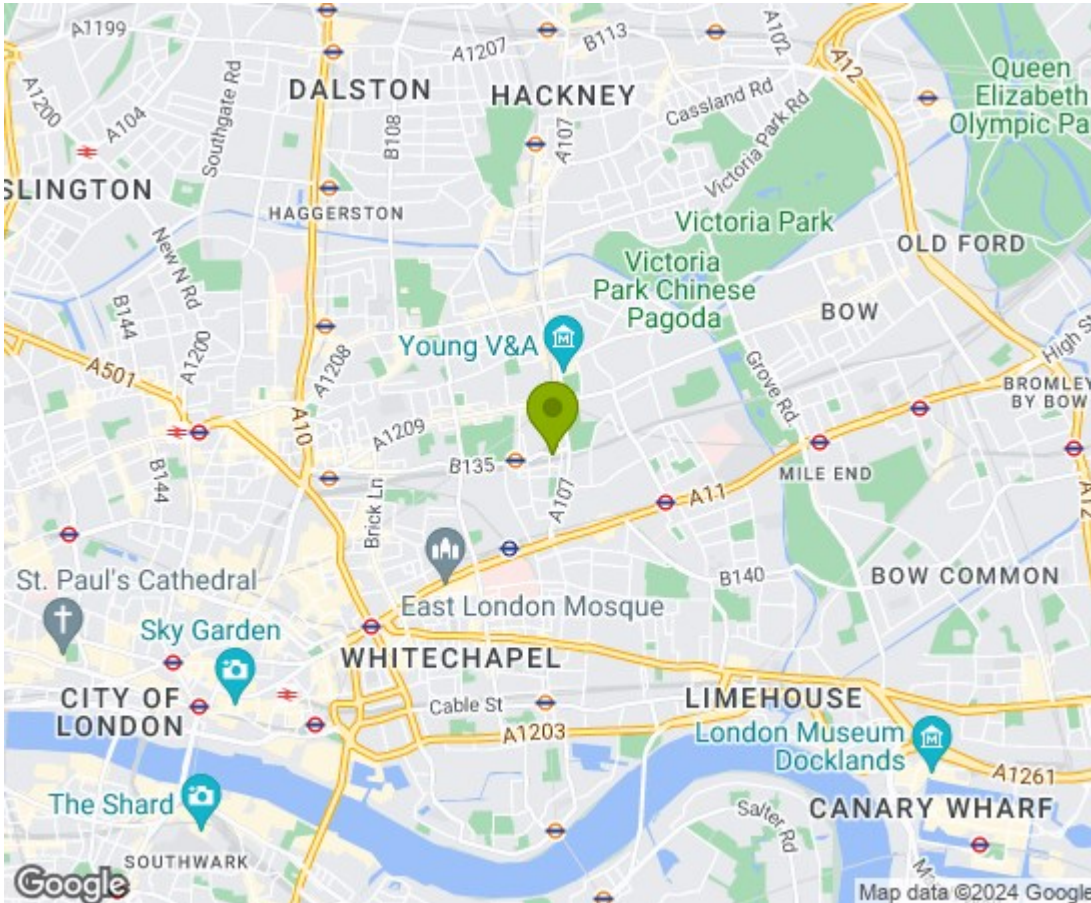
Second Floor
Floor Area 362 Sq Ft - 33.63 Sq M



Measured according to RICS IPMS2. Floor plan is for illustrative purposes only and is not to scale. Every attempt has been made to ensure the accuracy of the floor plan shown, however all measurements, fixtures, fittings and data shown are an approximate interpretation for illustrative purposes only. 1 sq m = 10.76 sq feet.

lpaplus.com

Date: 5/4/2023



Energy Efficiency Rating		Current	Potential
Very energy efficient - lower running costs			
(92 plus) A			
(81-91) B		75	77
(69-80) C			
(55-68) D			
(39-54) E			
(21-38) F			
(1-20) G			
Not energy efficient - higher running costs			
England & Wales		EU Directive 2002/91/EC	
Environmental Impact (CO ₂) Rating		Current	Potential
Very environmentally friendly - lower CO ₂ emissions			
(92 plus) A			
(81-91) B			
(69-80) C			
(55-68) D			
(39-54) E			
(21-38) F			
(1-20) G			
Not environmentally friendly - higher CO ₂ emissions			
England & Wales		EU Directive 2002/91/EC	

