



Hereward Green, Loughton IG10 2HF

£1,700

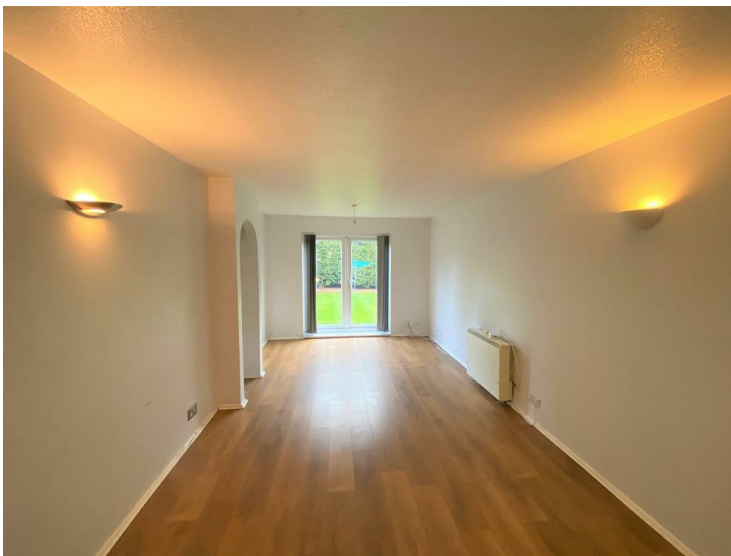
Birchills Estate Agents are very proud to present this ground floor flat for rent in Loughton.

This lovely home boasts a double bedroom, benefiting a walk-in wardrobe, a single bedroom, a modern fully fitted kitchen with appliances, a well sized bathroom and a lovely living room that leads out on to the garden

There is also off street parking to the front.

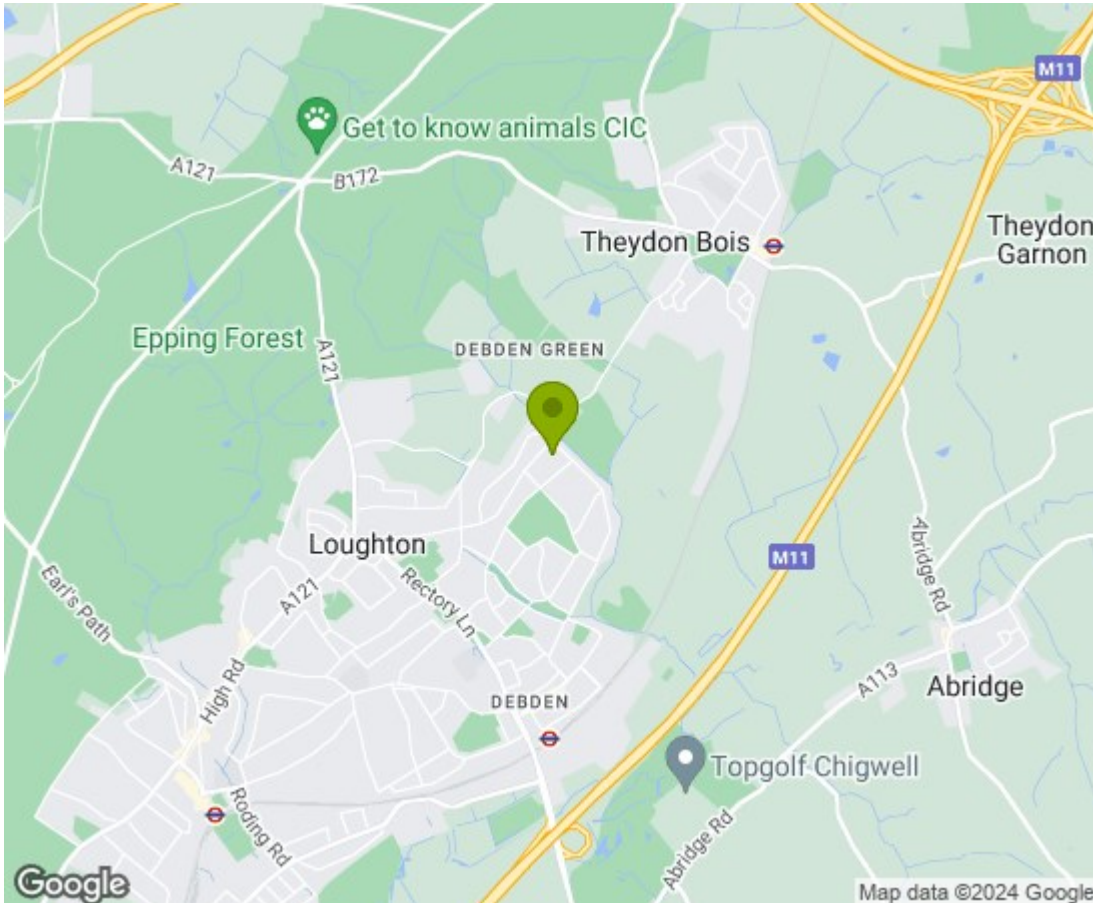
Please call Birchills office today to arrange an early viewing - we expect this fabulous home to be let very quickly !

Hereward Green, Loughton IG10 2HF



Hereward Green, Loughton IG10 2HF





Energy Efficiency Rating

	Current	Potential
Very energy efficient - lower running costs		
(92 plus) A		
(81-91) B		
(69-80) C		
(55-68) D	55	
(39-54) E		
(21-38) F		
(1-20) G		
Not energy efficient - higher running costs		
		74

England & Wales EU Directive 2002/91/EC

Environmental Impact (CO₂) Rating

	Current	Potential
Very environmentally friendly - lower CO ₂ emissions		
(92 plus) A		
(81-91) B		
(69-80) C		
(55-68) D		
(39-54) E		
(21-38) F		
(1-20) G		
Not environmentally friendly - higher CO ₂ emissions		
	53	57

England & Wales EU Directive 2002/91/EC

