



## **Ropers Avenue, Chingford E4 9EG**

**Guide price £650,000**

Welcome to this charming semi-detached house located on the desirable Ropers Avenue in Chingford. This property boasts a throughout lounge, perfect for entertaining guests or relaxing with your family. With three cosy bedrooms, there's plenty of space for everyone to unwind.

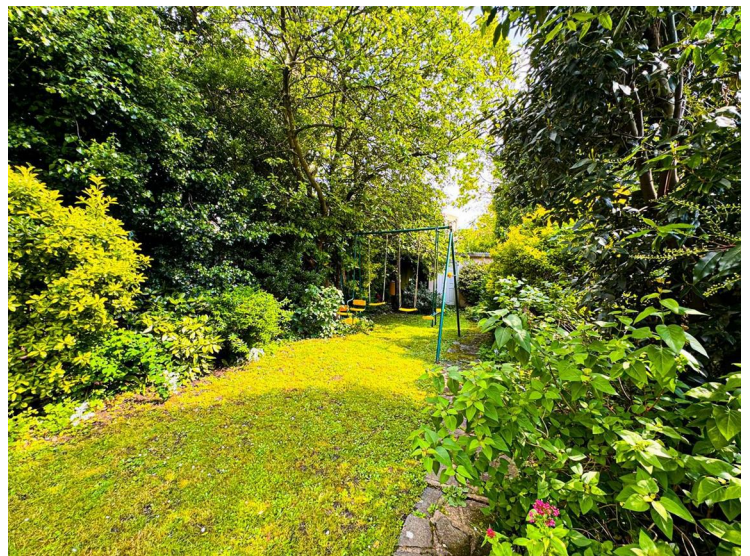
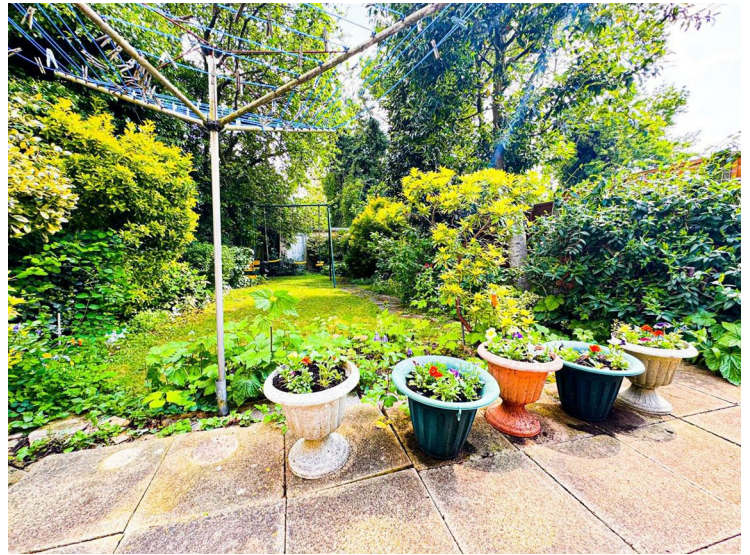
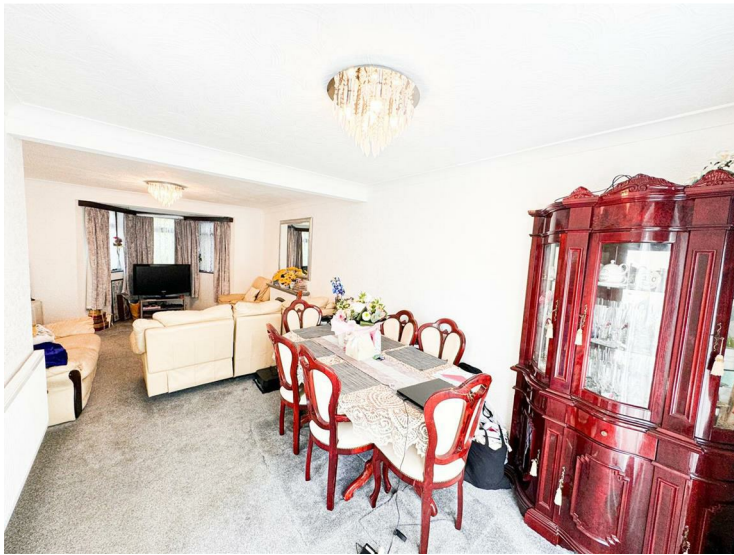
The house features a classic 1950s design, adding character and charm to the 1,033 sq ft living space. The large garden is a green oasis waiting to be enjoyed, ideal for summer barbecues or simply basking in the sun.

Convenience is key with parking available for one vehicle, ensuring you never have to worry about finding a spot. Additionally, the off-street parking adds an extra layer of security and ease to your daily routine.

Don't miss out on the opportunity to make this house your home. Contact us today to arrange a viewing and envision the endless possibilities this property has to offer.



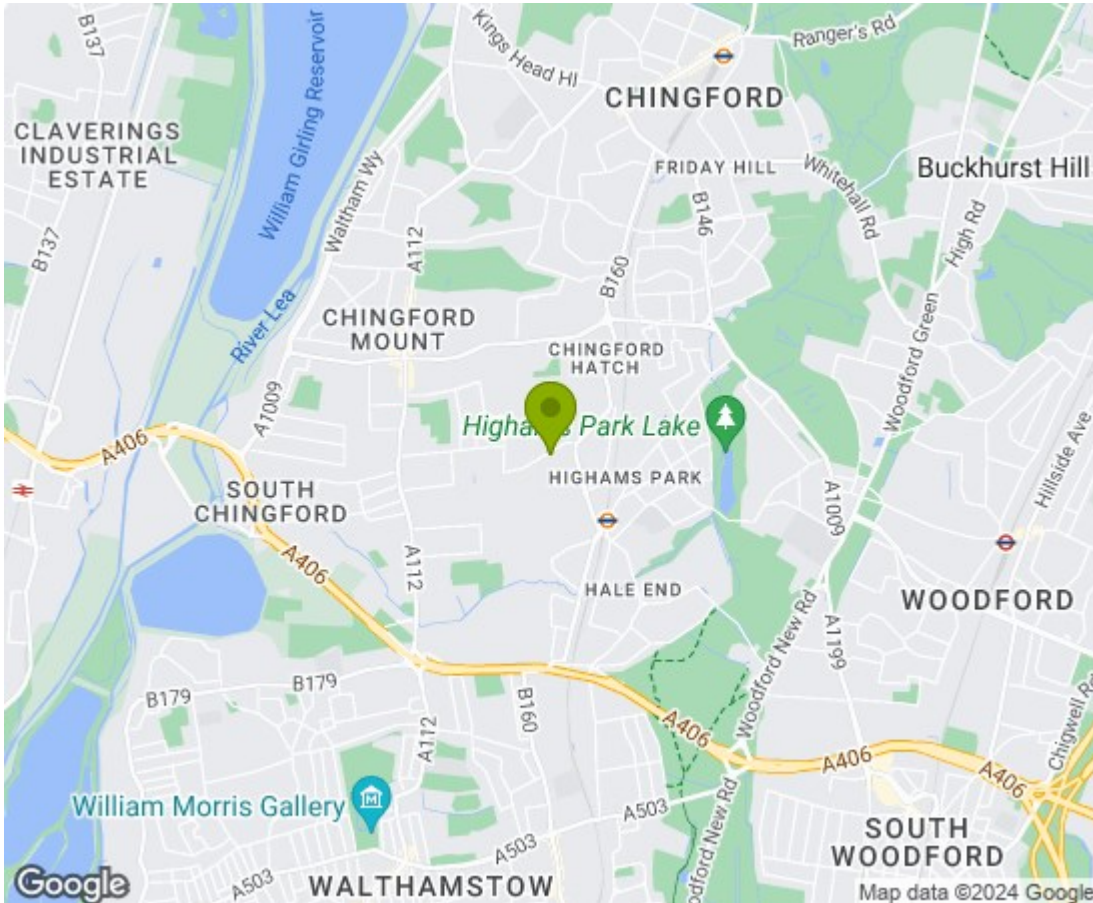
Ropers Avenue, Chingford E4 9EG





Ropers Avenue, Chingford E4 9EG





**Energy Efficiency Rating**

	Current	Potential
Very energy efficient - lower running costs		
(92 plus) <b>A</b>		
(81-91) <b>B</b>		
(69-80) <b>C</b>		
(55-68) <b>D</b>		
(39-54) <b>E</b>		
(21-38) <b>F</b>		
(1-20) <b>G</b>		
Not energy efficient - higher running costs		

England & Wales EU Directive 2002/91/EC

**Environmental Impact (CO<sub>2</sub>) Rating**

	Current	Potential
Very environmentally friendly - lower CO <sub>2</sub> emissions		
(92 plus) <b>A</b>		
(81-91) <b>B</b>		
(69-80) <b>C</b>		
(55-68) <b>D</b>		
(39-54) <b>E</b>		
(21-38) <b>F</b>		
(1-20) <b>G</b>		
Not environmentally friendly - higher CO <sub>2</sub> emissions		

England & Wales EU Directive 2002/91/EC

