



Earlham Grove, London E7 9AL

Guide price £950,000

Discover this spacious nine-bedroom semi-detached house nestled in Forest Gate, within easy reach of Maryland & Forest Gate Stations.

The ground floor welcomes you with two generous double bedrooms, two bathrooms, a sizeable reception room, and a sleek modern kitchen/diner.

Ascending to the first floor reveals five additional bedrooms and two more bathrooms.

On the second floor, discover two more bedrooms and another bathroom.

Outside, the property offers off-street parking for up to four cars at the front, while the rear features a private garden with an additional outbuilding perfect for use as an office.

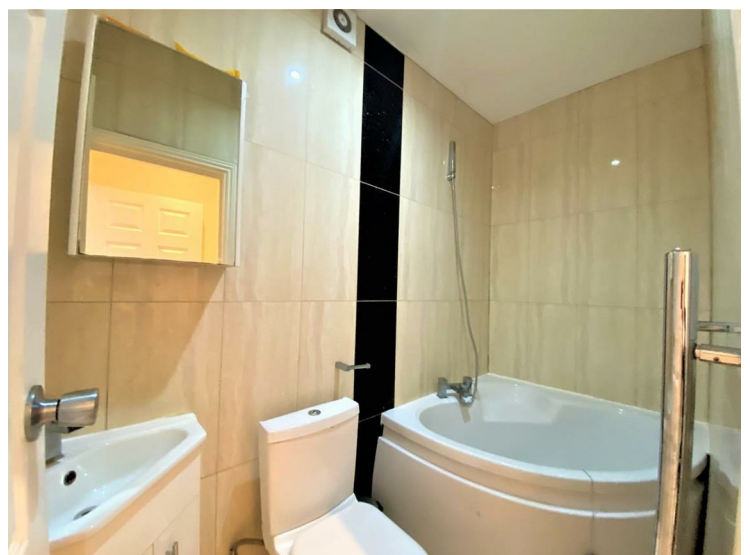
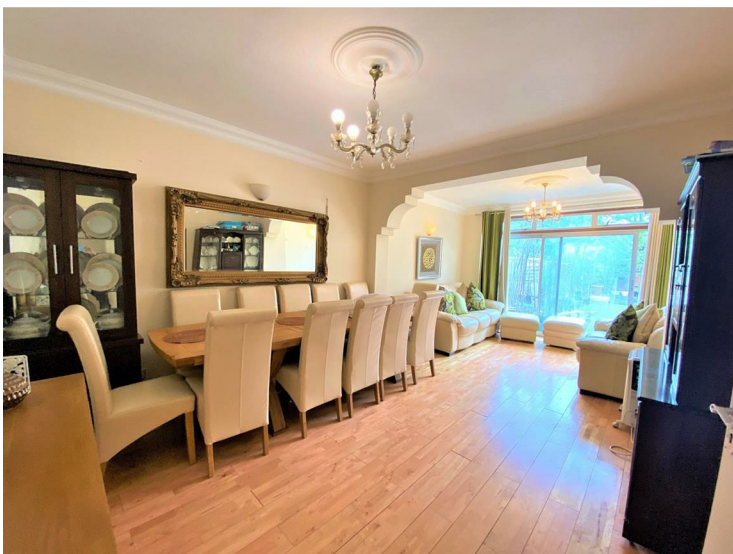
Contact a member of the Birchills Team today to secure an early viewing. This exceptional home is expected to attract significant interest, so don't delay!

3D Tour Available Upon Request

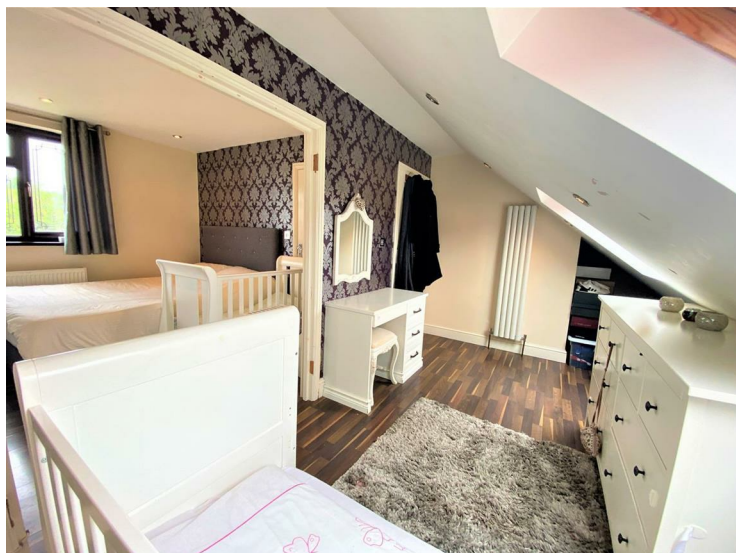
Earlham Grove, London E7 9AL



Earlham Grove, London E7 9AL

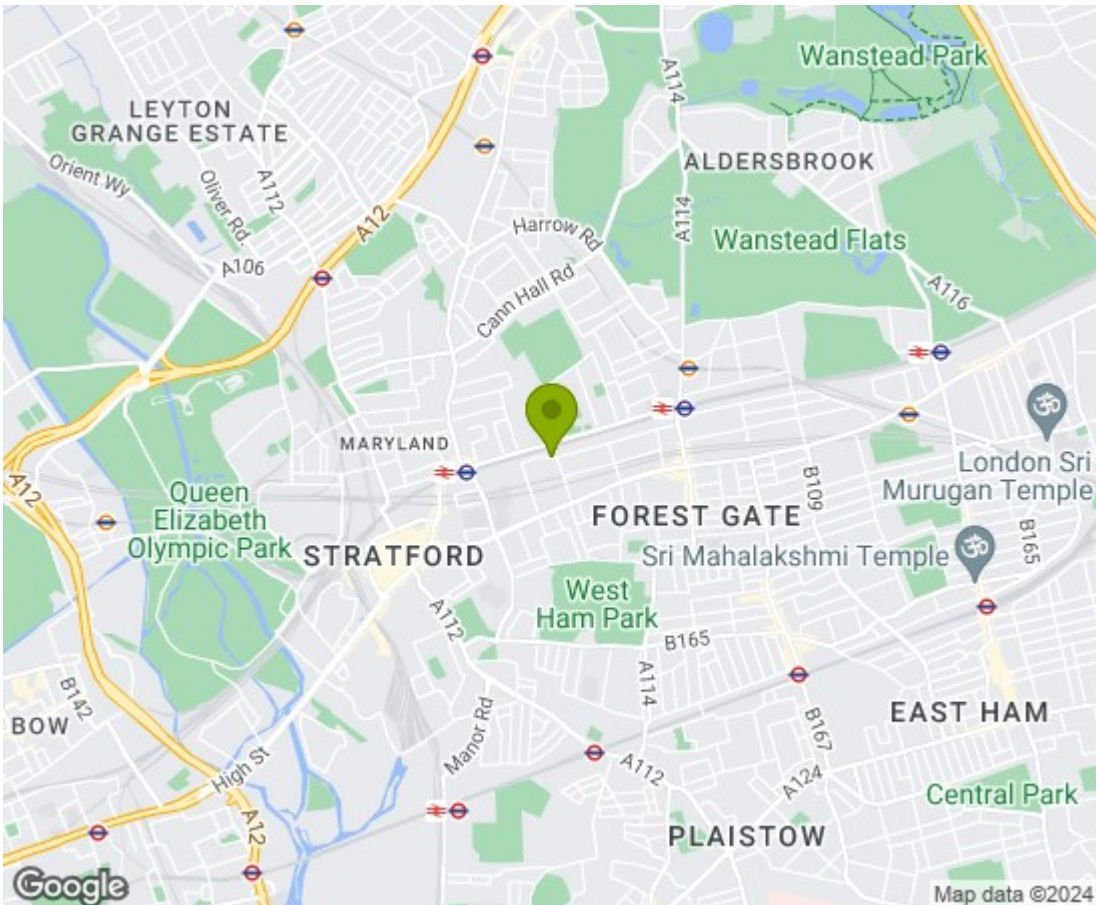
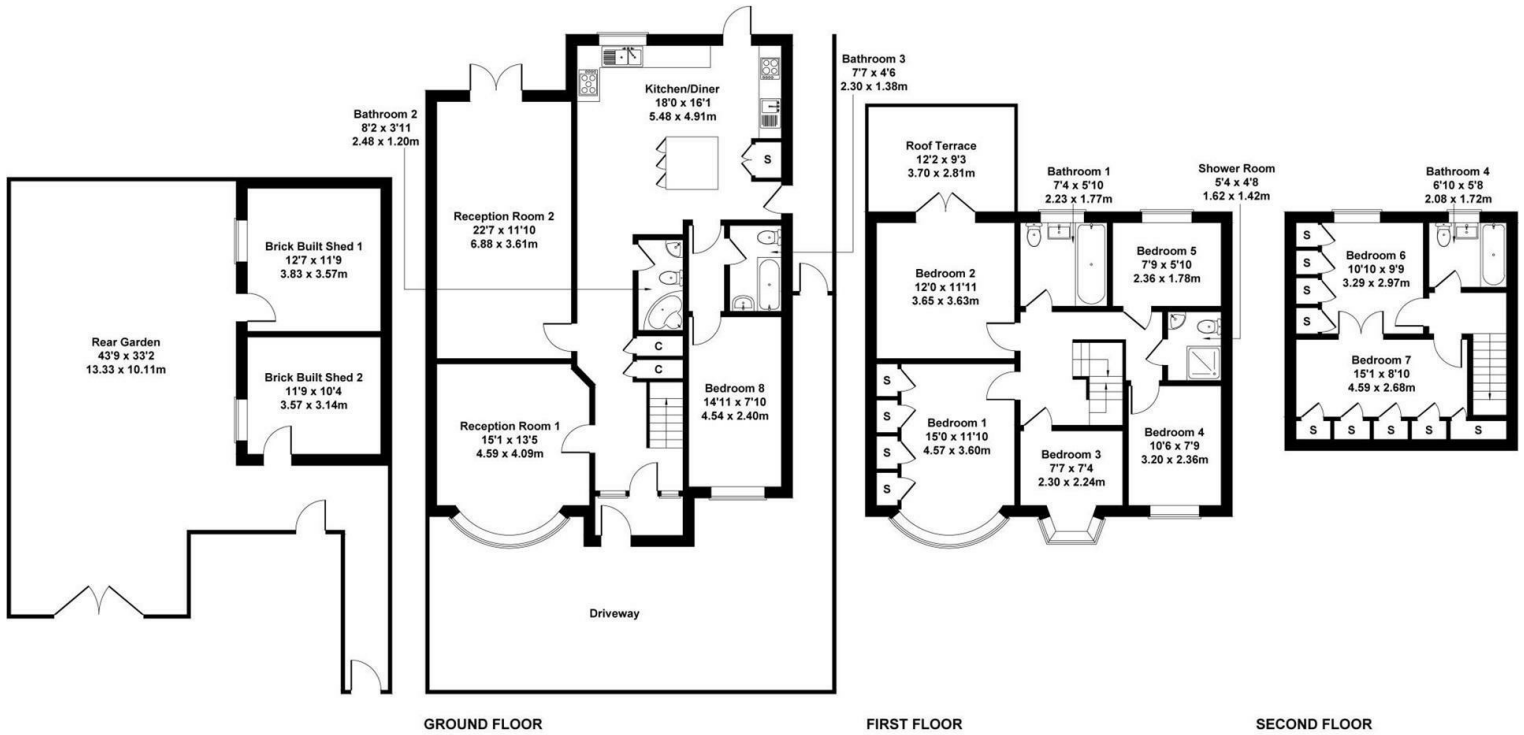


Earlham Grove, London E7 9AL



Earlham Grove, Forest Gate, London, E7 9AL

Approximate Gross Internal Area
2594 sq ft - 241 sq m



Energy Efficiency Rating

	Current	Potential
Very energy efficient - lower running costs		
(92 plus) A		
(81-91) B		
(69-80) C		
(55-68) D		
(39-54) E		
(21-38) F		
(1-20) G		
Not energy efficient - higher running costs		

England & Wales EU Directive 2002/91/EC

Environmental Impact (CO₂) Rating

	Current	Potential
Very environmentally friendly - lower CO ₂ emissions		
(92 plus) A		
(81-91) B		
(69-80) C		
(55-68) D		
(39-54) E		
(21-38) F		
(1-20) G		
Not environmentally friendly - higher CO ₂ emissions		

England & Wales EU Directive 2002/91/EC

