



## Reydon Avenue, London E11 2JD

£3,300

PLEASE CHECK OUT OUR 3D VIRTUAL SHOWCASE OF THIS BEAUTIFUL HOME!

Birchills Estate Agents are very pleased to present the rental market this 5 bedroom house within walking distance to Wanstead Tube Train Station.

The ground floor of this lovely home offers a large living room, open to a very bright skylighted kitchen/diner with appliances that leads out to a private low maintenance garden. The ground floor also benefits a downstairs double bedroom, and a downstairs shower room with WC.

The first floor offers 2 double bedrooms, single bedroom, and a family bathroom.

The second floor boasts a further huge double bedroom with an en-suite shower room with WC.

To the front of this wonderful home you will find a driveway for off street parking.

Please call a member of Birchills Team today to arrange an early viewing - we expect this fabulous home to let very quickly.

# Reydon Avenue, London E11 2JD

**Entrance Porch**  
9'10" x 4'4" (3 x 1.34)

**Entrance Hall**  
15'7" x 8'5" (4.75 x 2.59)



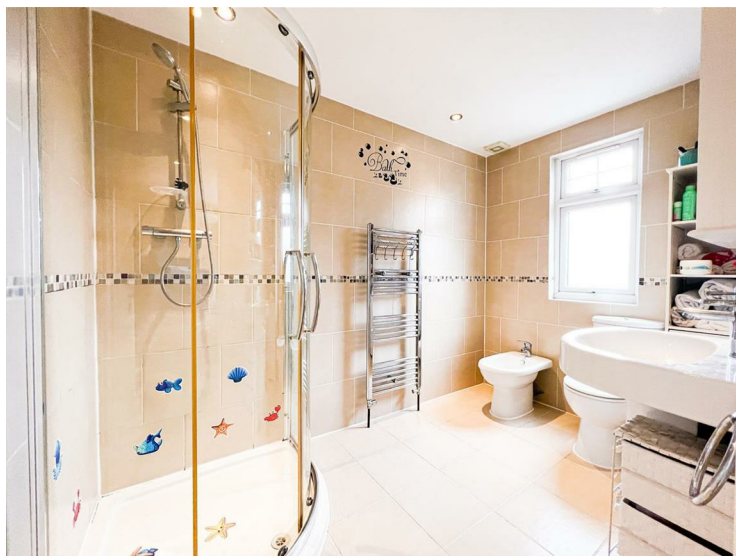
**Bedroom 1**  
16'3" x 13'6" (4.96 x 4.13)



**Reception**  
12'7" x 13'4" (3.84 x 4.08)

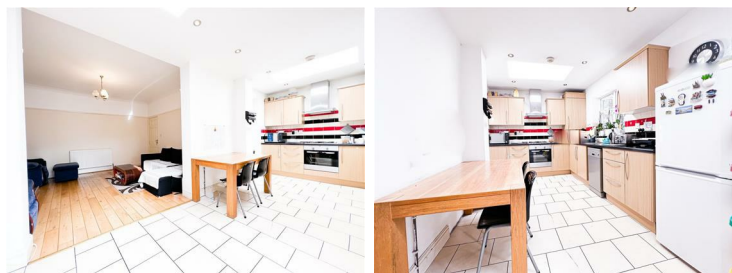


**Shower Room**  
8'10" x 2'11" (2.7 x 0.91)



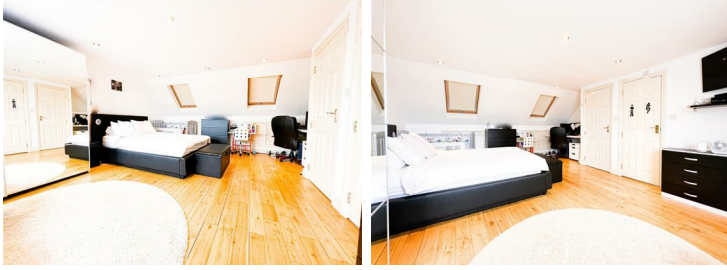
**Kitchen**  
20'5" x 19'10" (6.23 x 6.07)

**Diner**



# Reydon Avenue, London E11 2JD

**Bedroom 2**  
13'10" x 12'7" (4.24 x 3.84)



**En Suite**  
9'6" x 5'8" (2.9 x 1.75)



**Bedroom 3**  
16'3" x 13'5" (4.96 x 4.1)



**Front Of House**



**Bedroom 4**  
8'2" x 8'7" (2.51 x 2.63)



**Garden**



**Bedroom 5**  
18'11" x 13'1" (5.78 x 4)

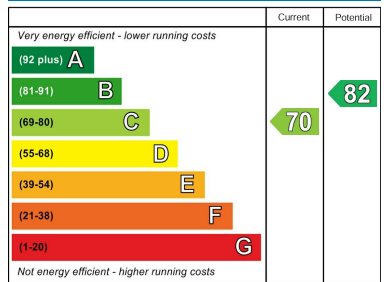
**Bathroom**  
9'10" x 8'1" (3.01 x 2.48)

Reydon Avenue, London E11 2JD



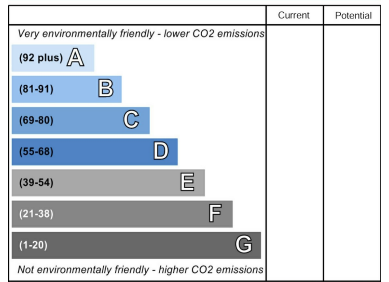


**Energy Efficiency Rating**



**England & Wales** EU Directive 2002/91/EC

**Environmental Impact (CO<sub>2</sub>) Rating**



**England & Wales** EU Directive 2002/91/EC

