



Corn Way, Leytonstone E11 4YF

Guide price £550,000

£500 Towards your legal fees or deposit if you buy with Birchills on this property.

Charming 3-Bed Townhouse Near Leyton Underground Tube Station

Birchills Estates Agents proudly present this delightful 3 double bedroom townhouse, ideally situated within a short stroll to Leyton Underground Tube Station.

The ground floor features a welcoming reception room, a modern kitchen equipped with all essentials, and a convenient downstairs WC for added functionality.

The first floor hosts another inviting double bedroom and a spacious living room, perfect for relaxation and entertaining guests.

On the top floor, you'll find two fantastic double bedrooms accompanied by a family bathroom, offering comfort and convenience for residents.

There is also the possibility to extend into the loft space.

Corn Way, Leytonstone E11 4YF

Front Of House



Bedroom 1



Living Room



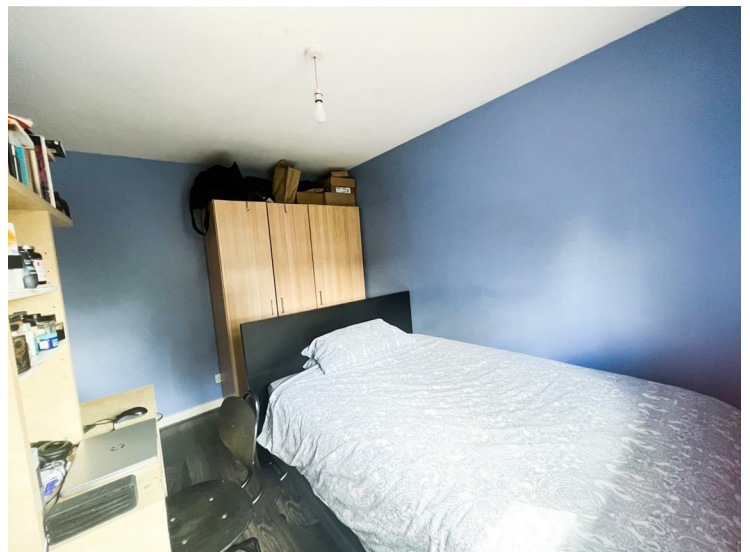
Bedroom 2



Reception Room



Bedroom 3



Corn Way, Leytonstone E11 4YF

Bathroom



Garden



WC



Kitchen



36 Corn Way, London
 Approximate Gross Internal Area
 Main House = 99 Sq M/1065 Sq Ft
 Outbuilding = 5 Sq M/54 Sq Ft
 Total = 104 Sq M/1119 Sq Ft



Please note that the location of doors, windows and other items are approximate and this floorplan is to be used for illustrative purposes only. Unauthorized reproduction is prohibited.



Energy Efficiency Rating		Current	Potential
Very energy efficient - lower running costs			
(92 plus)	A		
(81-91)	B		
(69-80)	C		
(55-68)	D		
(39-54)	E		
(21-38)	F		
(1-20)	G		
Not energy efficient - higher running costs			
England & Wales		EU Directive 2002/91/EC	
Environmental Impact (CO ₂) Rating		Current	Potential
Very environmentally friendly - lower CO ₂ emissions			
(92 plus)	A		
(81-91)	B		
(69-80)	C		
(55-68)	D		
(39-54)	E		
(21-38)	F		
(1-20)	G		
Not environmentally friendly - higher CO ₂ emissions			
England & Wales		EU Directive 2002/91/EC	

