



HUNTERS[®]
HERE TO GET *you* THERE

DISTRICT OF SHEPWAY
WOODPECKER WAY



4



2



1



B

HYTHE

Asking Price £350,000



HUNTERS[®]
HERE TO GET *you* THERE

Located in a prime position within “Martello lakes” close to Hythe town, three/four-bedroom end of terrace house is presented to a very good standard. Living space is situated over three floors. To the ground floor there is a single size bedroom four, (currently used as an office). There is a modern style cloakroom with wc, wash hand basin and stainless steel radiator, Laminated wood flooring extending into the lovely spacious open plan kitchen dining room which has a generous range of modern style units to wall and base, work surfaces with inset stainless steel sink /drainer and mixer tap, built in electric oven and gas hob over and stainless steel extractor hood. Double glazed window and doors to rear.

Upper floor landing with doors off to light and airy sitting room with twin aspect double glazed windows which enjoys sea views. The master bedroom has twin aspect double glazed windows with sea views. There is a modern style partly tiled en-suite shower room with spacious cubicle, wash and basin and matching style wc.

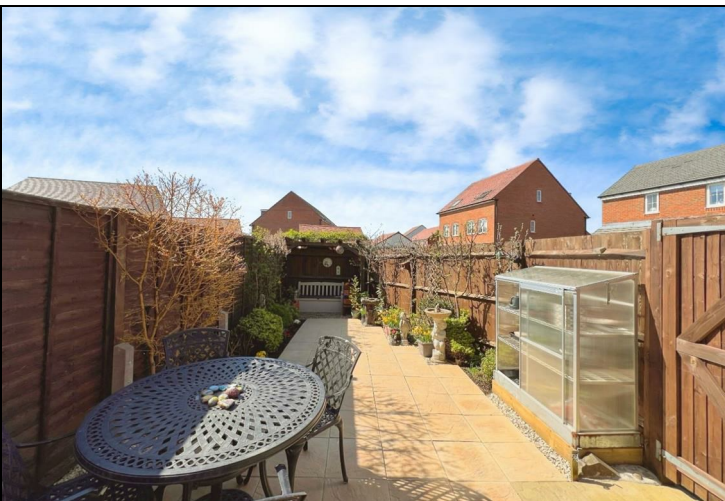
Second floor landing comprising modern white suite with panelled bath, low level WC, pedestal wash hand basin with mixer tap, radiator and extractor fan. There are two further double size bedrooms both with double glazed velux style windows.

The fence enclosed rear gardens are are mainly paved, well maintained with a variety of plants and flowers surround the borders. There is a gate to side giving access out to the car port which also provides another parking space. The front elevation has a larger than average lawn area to two sides of the central pathway.

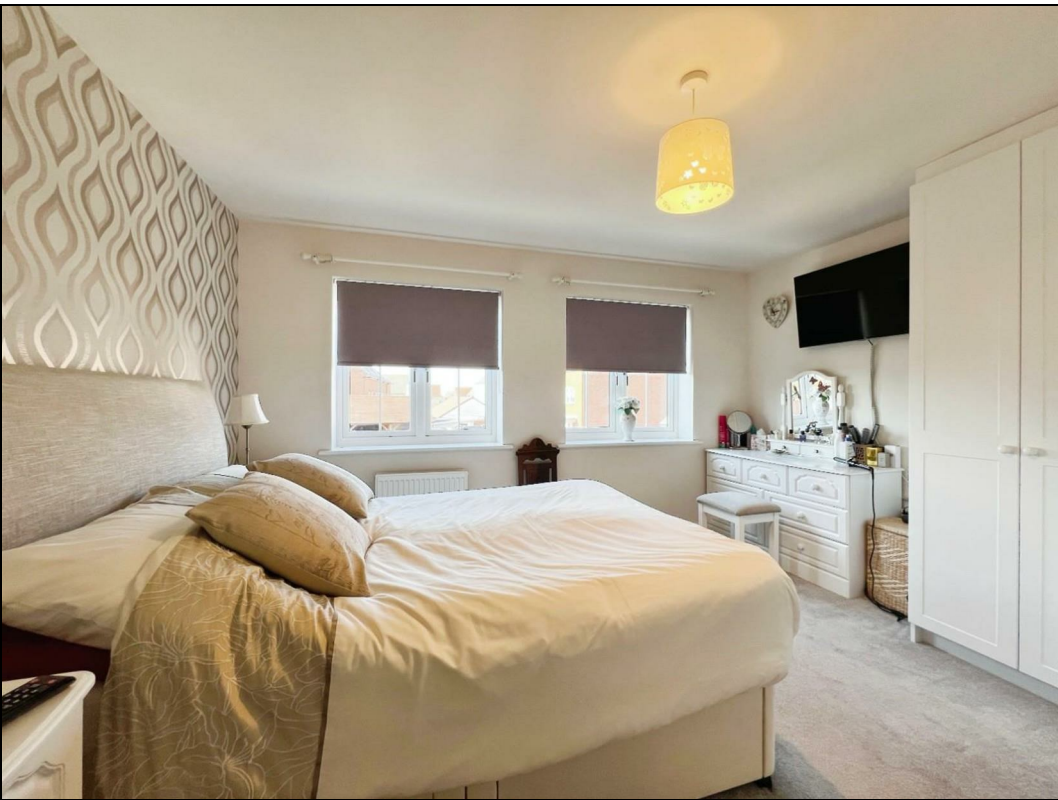


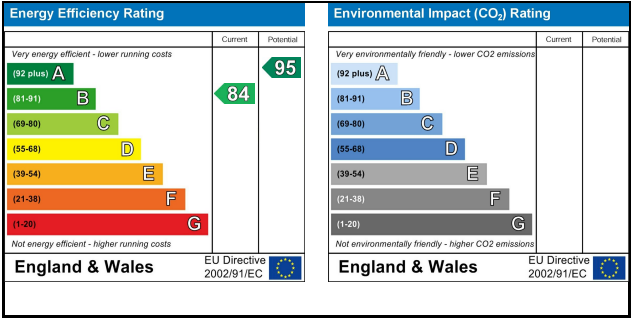
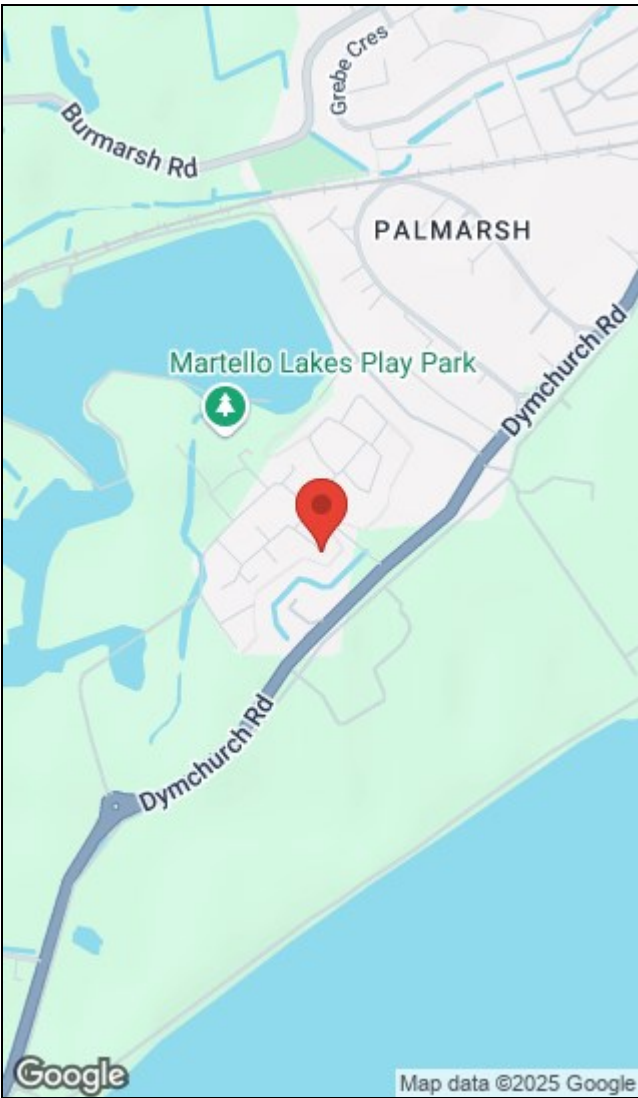
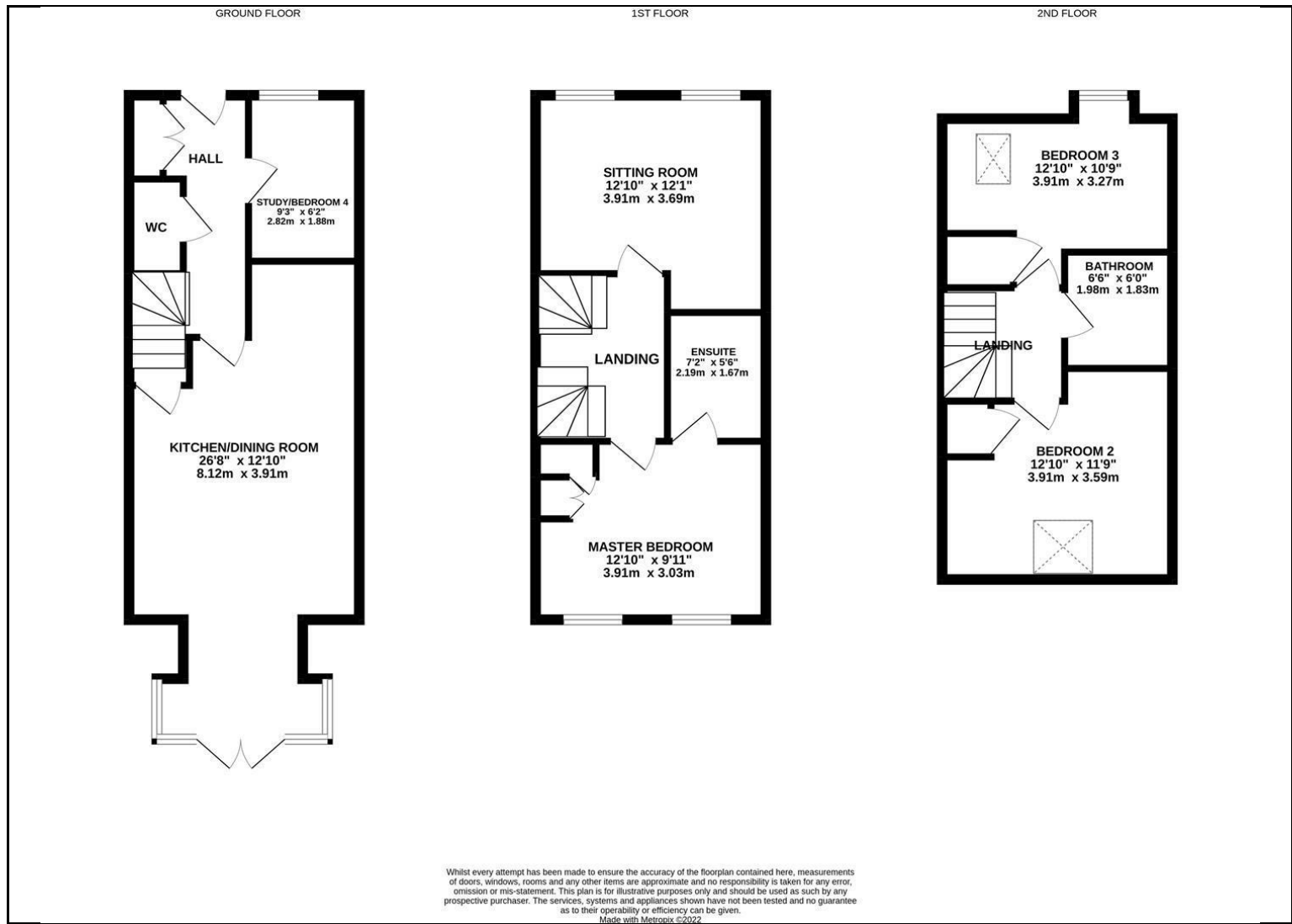
KEY FEATURES

- END OF TERRACE TOWN HOUSE - SEA VIEWS
 - THREE/FOUR BEDROOMS
 - EN-SUITE TO MASTER BEDROOM
 - OPEN PLAN KITCHEN/DINING ROOM
- GAS CENTRAL HEATING - DOUBLE GLAZING
- PRETTY FENCE ENCLOSED REAR GARDEN
 - CAR PORT - TWO PARKING SPACES
- COUNCIL TAX BAND: D - EPC RATING B
 - SECOND FAMILY BATHROOM









156a High Street, Hythe, Kent, CT21 6JU | 01303 261557
hythe@hunters.com | www.hunters.com



This Hunters business is independently owned and operated by Black & White Estates Limited | Registered Address: 4 Middle Row, Ashford, Kent, TN24 8SQ | Registered Number: 7896701 England and Wales | VAT No: 973 6297 73 with the written consent of Hunters Franchising Limited.