



Wakefield Way, Hythe, CT21 6HU

£220,000



A light and airy first floor apartment located in the picturesque town of Hythe! This property boasts a reception room leading to modern kitchen, two good sized bedrooms, and a modern bathroom. Situated in a prime location, you'll have easy access to the beach, perfect for leisurely strolls or relaxing days by the sea.

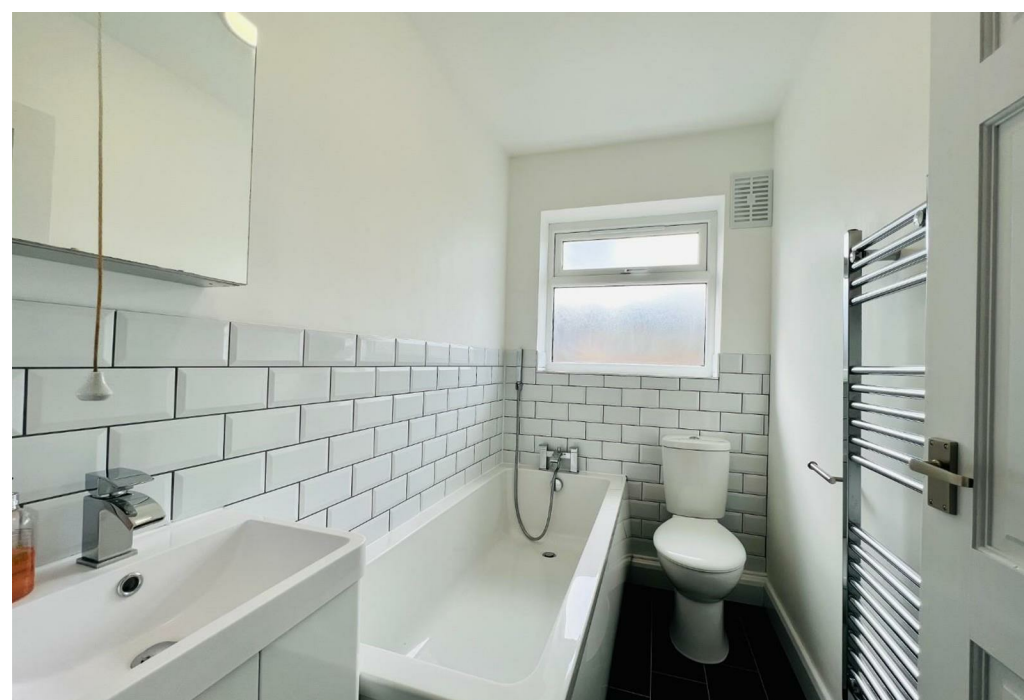
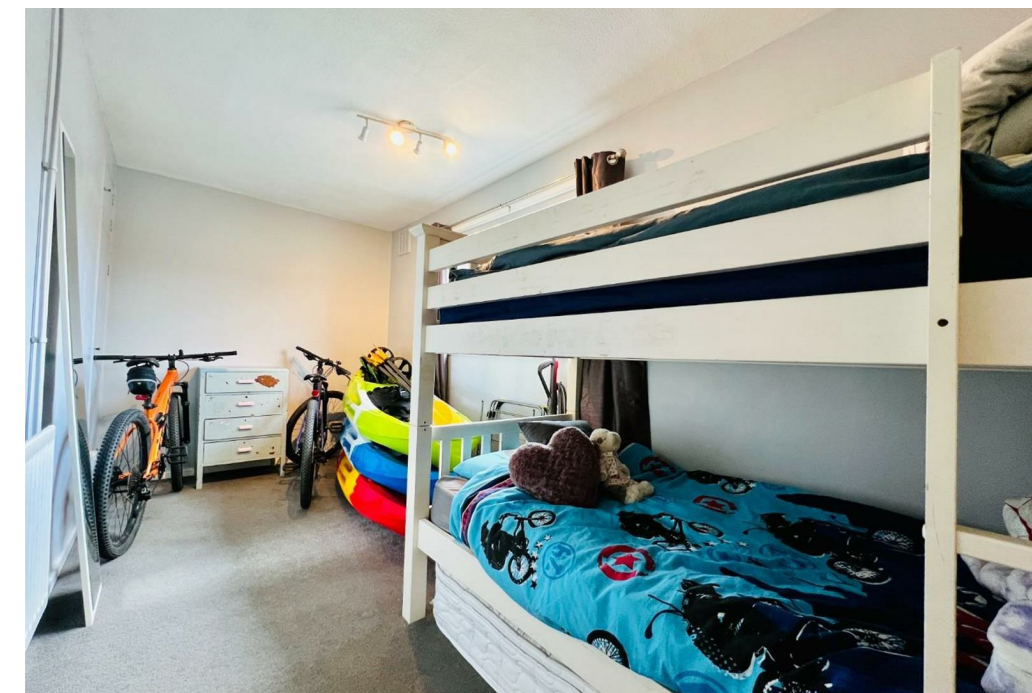
One of the standout features of this flat is its very own garden, providing a private outdoor space where you can enjoy al fresco dining, gardening, or simply basking in the sunshine. Imagine sipping your morning coffee surrounded by beautiful greenery right at your doorstep.

Whether you're looking for a weekend getaway or a permanent residence, this flat offers a perfect blend of comfort and convenience. Don't miss out on the opportunity to make this lovely property your own and experience the best of coastal living in Hythe.

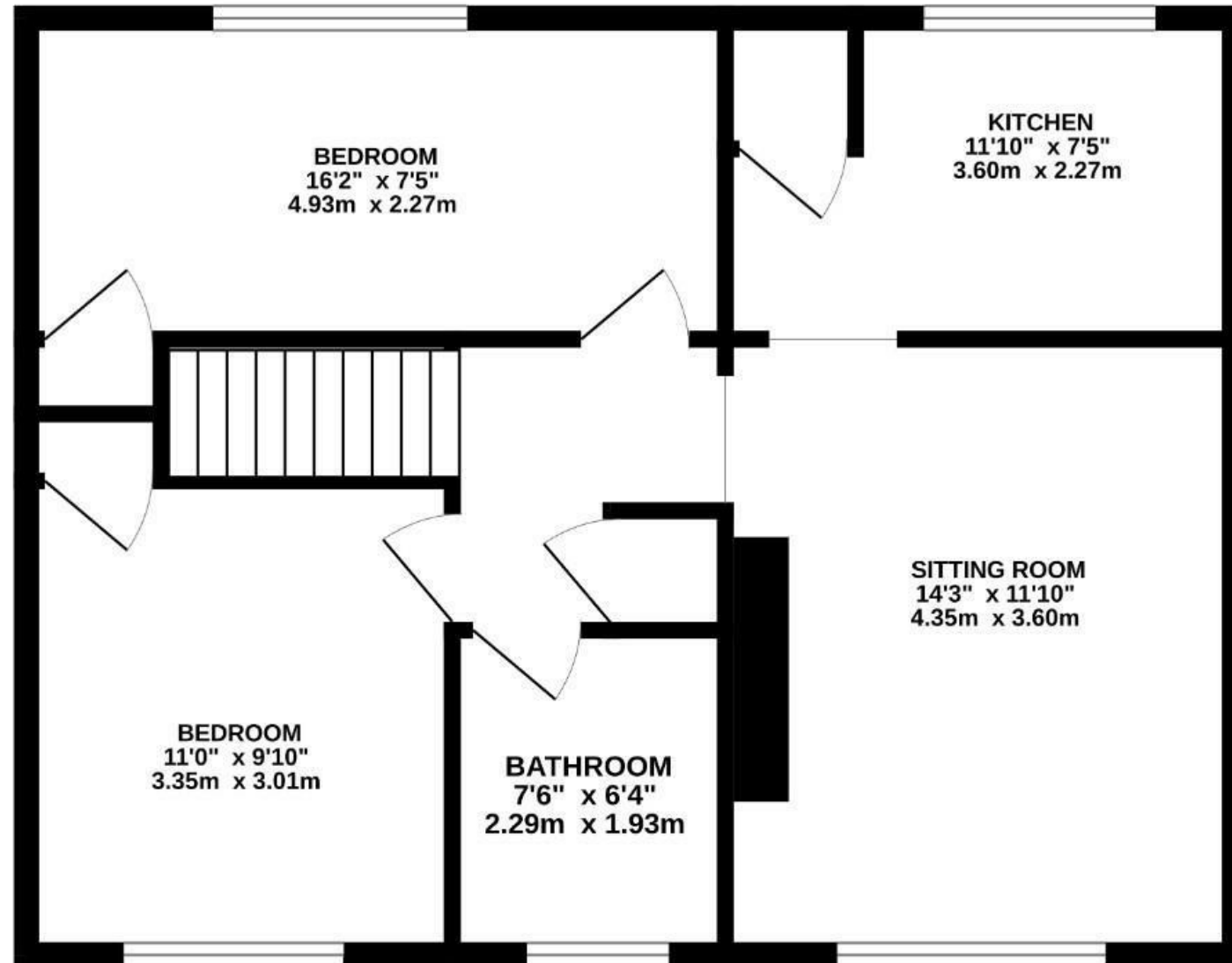
The charming Cinque Ports Town of Hythe, with an attractive seafront, 3 supermarkets (including Waitrose, Sainsburys and Aldi) and busy High Street with a choice of interesting, independent shops and restaurants. There are a variety of sports and leisure facilities, including 2 golf courses and the Hotel Imperial Leisure Centre. The historic and picturesque Royal Military Canal, with pleasant walks and cycle path and seafront with long pebbly beach are also nearby. Visit the famous Romney Hythe and Dymchurch Steam Railway.

The area has easy access to the M20 motorway, with Dover Harbour a short distance away to pop across to France. While the high-speed service to London St. Pancras in approx 50 minutes can also be accessed from nearby Folkestone Central and West station.

Services - Mains water, gas, electricity and sewerage
Heating - Gas central heating
Broadband - 14mb - 1000MB
Mobile Phone coverage - Ok - Good
Flood Risk - Very Low



1ST FLOOR



Whilst every attempt has been made to ensure the accuracy of the floorplan contained here, measurements of doors, windows, rooms and any other items are approximate and no responsibility is taken for any error, omission or mis-statement. This plan is for illustrative purposes only and should be used as such by any prospective purchaser. The services, systems and appliances shown have not been tested and no guarantee as to their operability or efficiency can be given.
Made with Metropix ©2024

Tenure: Leasehold
Council Tax Band: A

- TWO BEDROOM FIRST FLOOR APARTMENT
- WITHIN A SHORT WALK TO THE BEACH
- PRIVATE GARDEN
- MODERN KITCHEN
- MODERN BATHROOM
- GAS CENTRAL HEATING
- DOUBLE GLAZING

Energy Efficiency Rating		
	Current	Potential
<i>Very energy efficient - lower running costs</i>		
(92 plus) A		
(81-91) B		
(69-80) C		
(55-68) D		
(39-54) E		
(21-38) F		
(1-20) G		
<i>Not energy efficient - higher running costs</i>		
	63	78
England & Wales	EU Directive 2002/91/EC	

Environmental Impact (CO ₂) Rating		
	Current	Potential
<i>Very environmentally friendly - lower CO2 emissions</i>		
(92 plus) A		
(81-91) B		
(69-80) C		
(55-68) D		
(39-54) E		
(21-38) F		
(1-20) G		
<i>Not environmentally friendly - higher CO2 emissions</i>		
England & Wales	EU Directive 2002/91/EC	

These particulars are intended to give a fair and reliable description of the property but no responsibility for any inaccuracy or error can be accepted and do not constitute an offer or contract. We have not tested any services or appliances (including central heating if fitted) referred to in these particulars and the purchasers are advised to satisfy themselves as to the working order and condition. If a property is unoccupied at any time there may be reconnection charges for any switched off/disconnected or drained services or appliances - All measurements are approximate.

THINKING OF SELLING? If you are thinking of selling your home or just curious to discover the value of your property, Hunters would be pleased to provide free, no obligation sales and marketing advice. Even if your home is outside the area covered by our local offices we can arrange a Market Appraisal through our national network of Hunters estate agents.