



Cliff Road, , Hythe, CT21 5XE

- FIVE BEDROOM DETACHED FAMILY HOME
- THREE RECEPTION ROOMS
- FLEXIBLE LIVING ACCOMMODATION
- TWO EN SUITES AND FAMILY BATHROOM
- ENCLOSED PRIVATE GARDENS
- HIGHLY SOUGHT AFTER ROAD
- DOUBLE ASPECT KITCHEN/DINING ROOM
- CLOAKROOM AND UTILITY ROOM
- GATED DRIVEWAY LEADING TO DOUBLE GARAGE
- PLOT OF 0.39 OF AN ACRE

Asking Price £950,000



Cliff Road, , Hythe, CT21 5XE

DESCRIPTION

A spacious five bedroom detached family home situated in a highly desirable private road, which offers flexible living accommodation including three reception rooms, double garage and sits on a private southernly aspect plot of 0.39 of an acre.

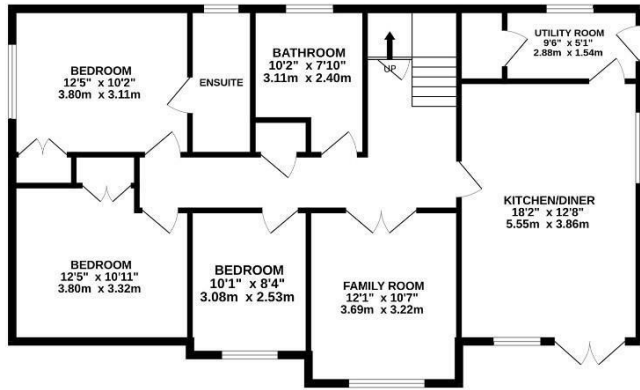
The light and airy accommodation offers entrance hall leading to cloakroom, double aspect sitting room with open fire, study, master bedroom with en suite shower room and walk in wardrobe and a good size fifth bedroom. The lower ground floor accommodation offers kitchen/dining room, utility room, family/dining room, guest bedroom with fitted wardrobes and en suite, double bedroom with fitted wardrobes, a further double bedroom and family bathroom. The kitchen offers a range of wall and base units with granite worktops and a range of integrated appliances.

The property is approached via gated driveway, which leads down to the property and double garage with additional parking. The property sits on a plot of approx. 0.39 of an acre with private southernly gardens which offer patio area overlooking the mainly laid lawn garden with a range of mature shrubs and trees.

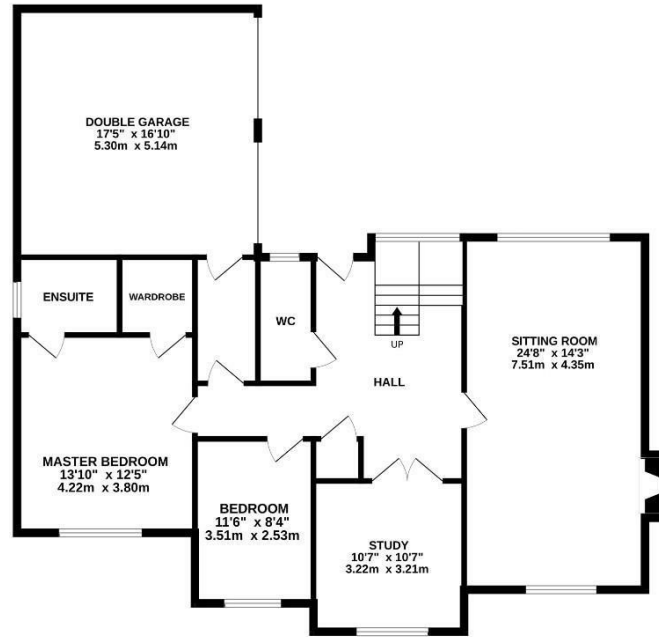




GROUND FLOOR
1062 sq.ft. (98.7 sq.m.) approx.



1ST FLOOR
1333 sq.ft. (123.8 sq.m.) approx.



TOTAL FLOOR AREA : 2395 sq.ft. (222.5 sq.m.) approx.

Whilst every attempt has been made to ensure the accuracy of the floorplan contained here, measurements of doors, windows, rooms and any other items are approximate and no responsibility is taken for any error, omission or mis-statement. This plan is for illustrative purposes only and should be used as such by any prospective purchaser. The services, systems and appliances shown have not been tested and no guarantee as to their operability or efficiency can be given.
Made with Metropix ©2024

Viewings

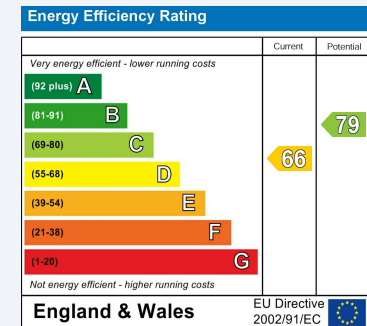
Please contact hythe@hunters.com, if you wish to arrange a viewing appointment for this property or require further information.

Valuations

For a valuation of your property, please email the team with your property details, contact information and the times you are available.

ENERGY PERFORMANCE CERTIFICATE

The energy efficiency rating is a measure of the overall efficacy of a home. The higher the rating the more energy efficient the home is and the lower the fuel bills will be.



These particulars are intended to give a fair and reliable description of the property but no responsibility for any inaccuracy or error can be accepted and do not constitute an offer or contract. We have not tested any services or appliances (including central heating if fitted) referred to in these particulars and the purchasers are advised to satisfy themselves as to the working order and condition. If a property is unoccupied at any time there may be reconnection charges for any switched off/disconnected or drained services or appliances - All measurements are approximate.

THINKING OF SELLING? If you are thinking of selling your home or just curious to discover the value of your property, Hunters would be pleased to provide free, no obligation sales and marketing advice. Even if your home is outside the area covered by our local offices we can arrange a Market Appraisal through our national network of Hunters estate agents.

