



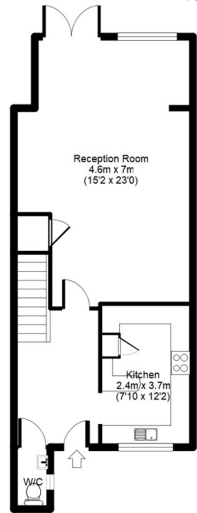
The Ridgeway, North Chingford, E4 6QN

PCM
£2,400 PCM

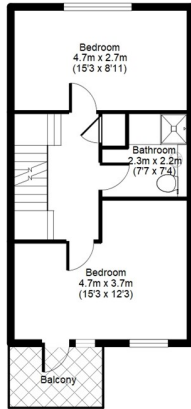


The Ridgeway, Chingford, E4

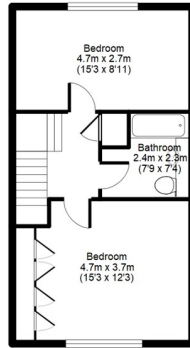
APPROX GROSS INTERNAL FLOOR AREA: 1406 sq. ft / 131 sq. m



Ground Floor



First Floor



Second Floor

For identification purposes only
Measurements are approx and not to scale



Energy Efficiency Rating		Current	Potential
Very energy efficient - lower running costs			
(92 plus) A			88
(81-91) B			
(69-80) C			
(55-68) D		70	
(39-54) E			
(21-38) F			
(1-20) G			
Not energy efficient - higher running costs			
England & Wales		EU Directive 2002/91/EC	



Agents Note: Whilst every care has been taken to prepare these particulars, they are for guidance purposes only. All measurements are approximate and are for general guidance purposes only and whilst every care has been taken to ensure their accuracy, they should not be relied upon and potential buyers/tenants are advised to recheck the measurements



OFFICE DETAILS

26 Station Road
North Chingford
London
E4 7BE

020 8090 0860
lettings@coultons.co.uk
www.coultons.co.uk

OFFICE DETAILS

425a Lordship Lane
Wood Green
London
N22 5DH

020 3869 8989
lettings@coultons.co.uk
www.coultons.co.uk