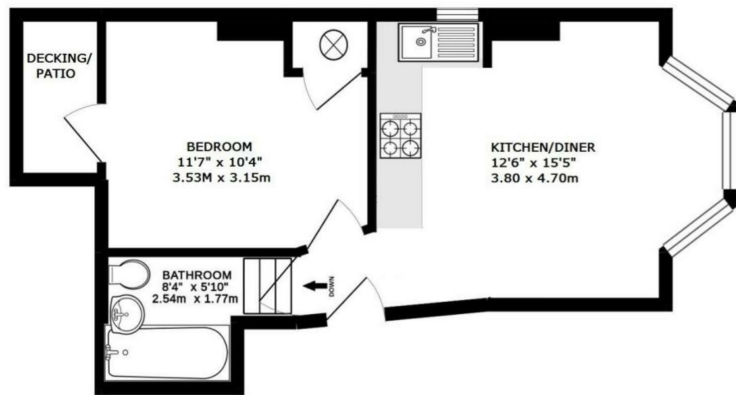




Maygrove Road, West Hampstead, NW6 2EP

PER MONTH
£1,700 Per Month

 **Coultons**



TOTAL FLOOR AREA: 377 sq.ft. (35.1sq.m.) approx.
 Whilst every attempt has been made to ensure the accuracy of the floorplan contained here, measurements of doors, windows, rooms and any other items are approximate and no responsibility is taken for any error, omission or misstatement. This plan is for guidance purposes only and should be used in such by any prospective purchaser. The services, systems and appliances shown have not been tested and no guarantee is given for their operability or efficiency can be given.
 Made with Myrepx ©2019



Energy Efficiency Rating		Current	Potential
Very energy efficient - lower running costs			
(92 plus) A			
(81-91) B			
(69-80) C			
(55-68) D			65
(39-54) E	44		
(21-38) F			
(1-20) G			
Not energy efficient - higher running costs			
England & Wales		EU Directive 2002/91/EC	

Agents Note: Whilst every care has been taken to prepare these particulars, they are for guidance purposes only. All measurements are approximate and are for general guidance purposes only and whilst every care has been taken to ensure their accuracy, they should not be relied upon and potential buyers/tenants are advised to recheck the measurements



OFFICE DETAILS
 26 Station Road
 North Chingford
 London
 E4 7BE

020 8090 0860
 lettings@coultons.co.uk
 www.coultons.co.uk

OFFICE DETAILS
 425a Lordship Lane
 Wood Green
 London
 N22 5DH

020 3869 8989
 lettings@coultons.co.uk
 www.coultons.co.uk