

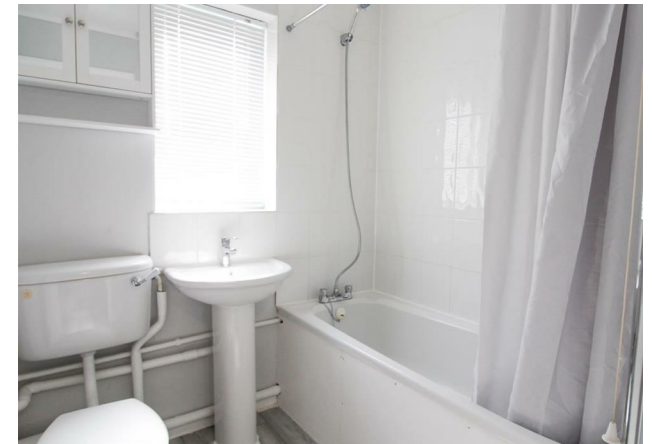


Plowman Close, Edmonton, N18 1XB

PCM  
£1,250 PCM



FLATS



Energy Efficiency Rating		Current	Potential
Very energy efficient - lower running costs			
(92 plus) A			76
(81-91) B			
(69-80) C			
(55-68) D		47	
(39-54) E			
(21-38) F			
(1-20) G			
Not energy efficient - higher running costs			
<b>England &amp; Wales</b>		EU Directive 2002/91/EC	

Agents Note: Whilst every care has been taken to prepare these particulars, they are for guidance purposes only. All measurements are approximate and are for general guidance purposes only and whilst every care has been taken to ensure their accuracy, they should not be relied upon and potential buyers/tenants are advised to recheck the measurements



**OFFICE DETAILS**

26 Station Road  
North Chingford  
London  
E4 7BE

020 8090 0860  
lettings@coultons.co.uk  
www.coultons.co.uk

**OFFICE DETAILS**

425a Lordship Lane  
Wood Green  
London  
N22 5DH

020 3869 8989  
lettings@coultons.co.uk  
www.coultons.co.uk