



Mary Park Gardens, CM23 3ES

£550,000  Coultons

PROPERTY SUMMARY

Coultons are thrilled to offer for sale this recently extended & refurbished three/four bedroom double fronted family home Situated off Bishop's Avenue, close to the local shopping/travelling facilities of the Town Centre and Bishop's Stortford Mainline Train Station with direct rail services into London Liverpool Street. The property is to be sold on a chain free basis.

Location

Ideally located just 1.9 miles (approx.) from the train station with commuter services to London's Liverpool Street.

Perfectly situated for The Bishop's Stortford High School just 0.4 miles away (approx.), Thorley Hill Primary School (approx 0.1 miles away), as well as many other excellent schools for all ages in both the private and state sectors.

Conveniently located for access to the town centre which offers a wide range of shops, pubs and restaurants including H&M, M&S, Mint Velvet, Bill's, Aldi, plus cinema and two leisure centres.

There are good transport links by road via the A10 and M11 approximately 2.5 miles away (junction 8).

In addition, international travel can be easily accessed via Stansted Airport 5 miles away (approx.).

3



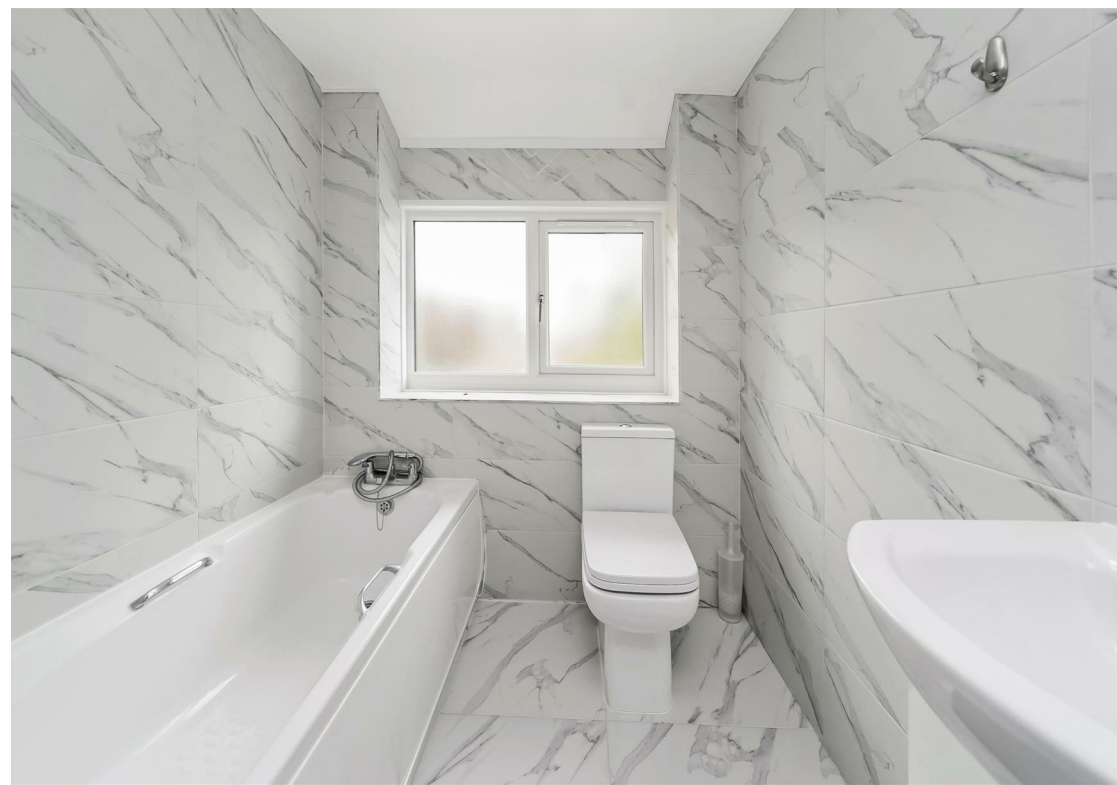
2



2

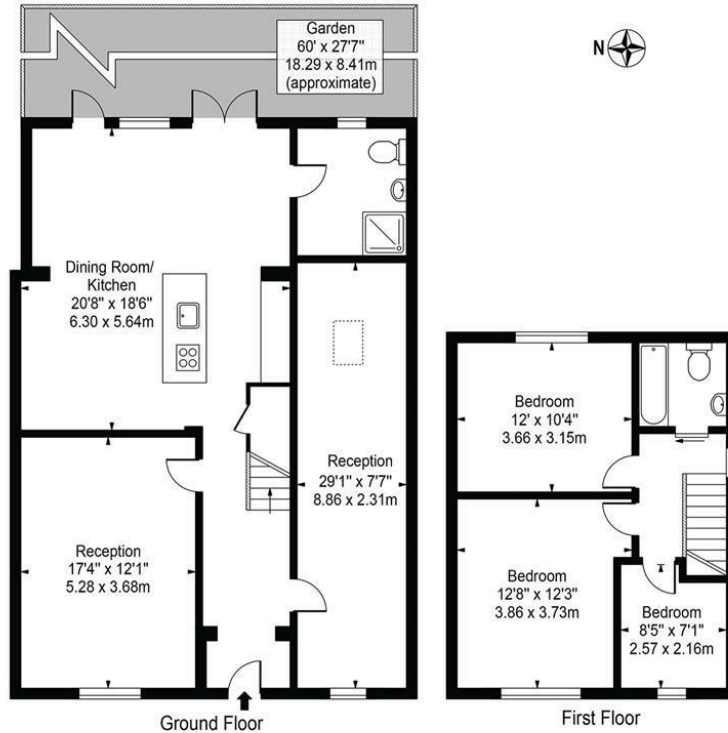








Mary Park Gardens,
Bishop's Stortford, CM23 3ES
Approx. Gross Internal Area 1451 Sq Ft - 134.80 Sq M



For Illustration Purposes Only - Not To Scale

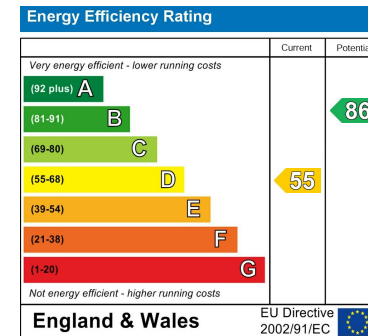
This floor plan should be used as a general outline for guidance only and does not constitute in whole or in part an offer or contract. Any intending purchaser or lessee should satisfy themselves by inspection, searches, enquiries and full survey as to the correctness of each statement. Any areas, measurements or distances quoted are approximate and should not be used to value a property or be the basis of any sale or let.

LOCAL AUTHORITY
East Hertfordshire

TENURE
Freehold

COUNCIL TAX BAND
D

VIEWINGS
By prior appointment only



Agents Note: Whilst every care has been taken to prepare these particulars, they are for guidance purposes only. All measurements are approximate and are for general guidance purposes only and whilst every care has been taken to ensure their accuracy, they should not be relied upon and potential buyers/tenants are advised to recheck the measurements



OFFICE ADDRESS

26 Station Road
North Chingford
London
E4 7BE

020 8090 0860
sales@coultons.co.uk
www.coultons.co.uk

OFFICE ADDRESS

425a Lordship Lane
Wood Green
London
N22 5DH

020 3869 8989
sales@coultons.co.uk
www.coultons.co.uk