



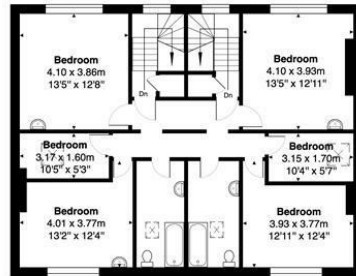
Lordship Lane, Wood Green, N22 5BY

ASKING PRICE
£1,550,000

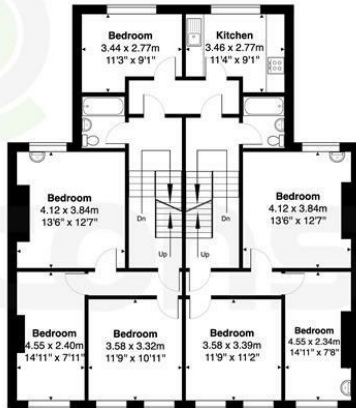
 Coultons

Lordship Lane- N22

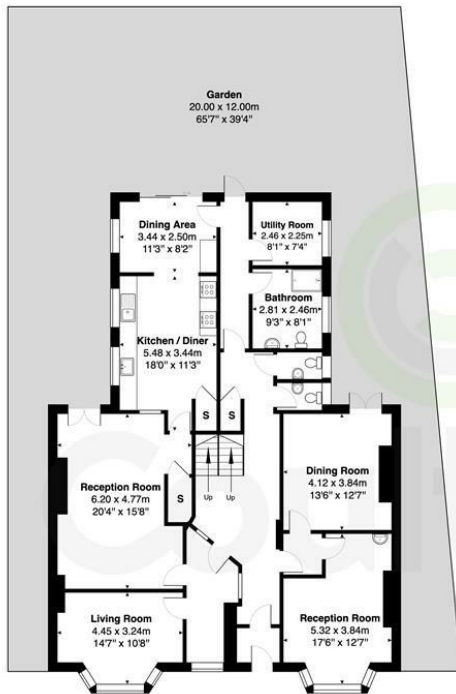
Approximate Gross Internal Area 410.0 m² ... 4413 RF (excluding garden)



SECOND FLOOR



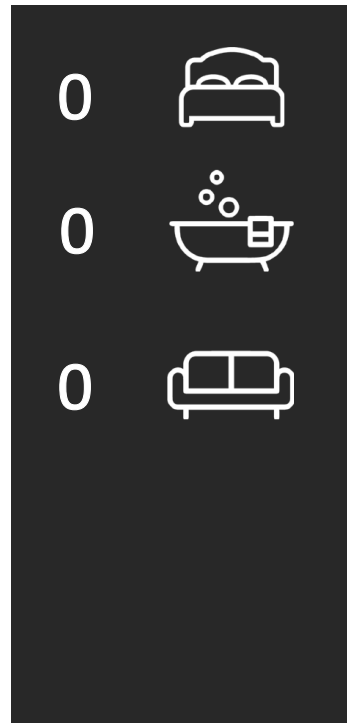
FIRST FLOOR



GROUND FLOOR

Garden
20.00 x 12.00m
65'7" x 39'4"

This Plan is for illustration purpose only and used as general indication of the proposed layout of the property. Dimensions are maximum and approximate and may vary.
Copyright One Square Space Ltd



Energy Efficiency Rating

	Current	Potential
Very energy efficient - lower running costs		
(92 plus) A		
(81-91) B		
(69-80) C		73
(55-68) D	54	
(39-54) E		
(21-38) F		
(1-20) G		
Not energy efficient - higher running costs		
England & Wales	EU Directive 2002/91/EC	

Agents Note: Whilst every care has been taken to prepare these particulars, they are for guidance purposes only. All measurements are approximate and are for general guidance purposes only and whilst every care has been taken to ensure their accuracy, they should not be relied upon and potential buyers/tenants are advised to recheck the measurements



OFFICE DETAILS

26 Station Road
North Chingford
London
E4 7BE

020 8090 0860
sales@coultons.co.uk
www.coultons.co.uk

OFFICE DETAILS

425a Lordship Lane
Wood Green
London
N22 5DH

020 3869 8989
sales@coultons.co.uk
www.coultons.co.uk