



**Murano Drive, Basingstoke, Hampshire, RG24  
8PN**

**Guide Price £225,000**



Introducing a stunning one-bedroom penthouse apartment in the highly desirable Vyne Park Development, proudly presented by Loddon Properties.

Step inside to discover a welcoming, spacious hallway that sets the elegant tone for the entire home.

This apartment boasts a sleek, modern bathroom, complete with high-quality fixtures and fittings. The beautifully designed bedroom features a built-in double wardrobe and extra storage space for maximum functionality.

The heart of this charming residence is the open-plan kitchen, lounge, and dining area. Perfect for unwinding, this inviting space is equipped with contemporary appliances and plenty of storage, catering to all your living and dining needs.

In addition, enjoy the convenience of two allocated parking spaces. Don't miss out on this incredible opportunity – call now to schedule your personal viewing appointment!

Situated within Vyne Park; close to local amenities, a regular bus service with both Chineham shopping centre and Basingstoke town centre just a short drive The location has excellent commuter access to the M3 & M4 and a mainline railway station with fast trains to London Waterloo (approx. 45 minutes) this property is an ideal first home or a perfect hub for commuting in a very sought after location.

Lease Length:Circa 118 Years

Service charges of circa £2400 per annum

Tenure:Leasehold

EPC rating: B

Council Tax Band: B





- SPACIOUS ONE BEDROOM PENTHOUSE FLAT
- DOUBLE BEDROOM WITH BUILT IN WARDROBE
- MODERN BATHROOM
- LARGE OPEN PLAN KITCHEN/LIVING AREA
- PLENTY OF STORAGE
- TWO ALLOCATED PARKING SPACES
- CLOSE TO LOCAL AMENITIES
- GREAT COMMUTABILITY

Score	Energy rating	Current	Potential
92+	<b>A</b>		
81-91	<b>B</b>	84 B	84 B
69-80	<b>C</b>		
55-68	<b>D</b>		
39-54	<b>E</b>		
21-38	<b>F</b>		
1-20	<b>G</b>		

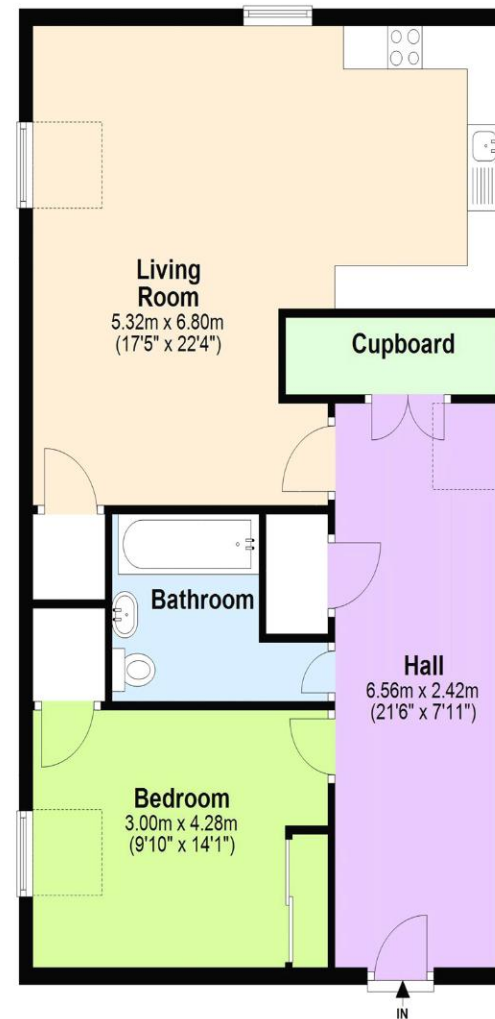
 **rightmove**.co.uk  
The UK's number one property website

 **twitter**

 Find us on  
**Facebook**

 **The Property Ombudsman**

## Ground Floor



All images used are for illustrative purposes only and are intended to convey the concept and vision for the property. They are provided as a guide only, and should be used as such. Floor plans are intended to give a general indication of the properties layout only. All images and dimensions are not intended to form part any contract or warranty.  
Plan produced using PlanUp.

**LODDON PROPERTIES**

TEL: 01256 808 454

Chineham Shopping Centre Reading Road Chineham Basingstoke Hampshire  
RG24 8BQ  
info@loddonproperties.com  
www.loddonproperties.com