



**Ajax Close, Basingstoke, Hampshire, RG24  
8XA**

**Guide Price £550,000**



**A FABULOUS FAMILY HOME WITH COMFORT AND SPACE.** Introducing this exceptional, four bedroom family home, brought to you by LODDON PROPERTIES. Located in the popular Chineham area, this property offers a perfect blend of comfort, convenience, and elegance. As you step inside, you are met with a welcoming hallway that sets the tone for the entire home. The hallway provides access to a convenient cloakroom, and leads to the heart of the home — an extra large, open plan two part living room with solid wooden floors, fireplace and bi-fold doors leading out onto the patio and private back garden. This space can be split up to form spaces for your personal needs. The well-equipped kitchen is a chef's delight, featuring integrated white goods such as a fridge, hob/oven, and dishwasher. Its clever open plan layout provides great space for dining, with sliding doors open up to the garden, allowing natural light to flood the space, creating a seamless indoor-outdoor connection. Whether it's family meals or entertaining guests, this space is designed to cater to your every need. Upstairs, a sense of tranquillity awaits, with four double bedrooms that offer ample space for relaxation and personalisation. Every room has been thoughtfully designed to provide the perfect balance of comfort and style. A well-appointed modern family bathroom with a shower and a second bathroom, offering an en-suite with double basin and a bath with a shower over adds to the convenience of the home. Outside, the property is adorned with convenient side access to the front, leading to ample driveway parking for multiple vehicles. The south facing garden has been lovingly maintained to create an idyllic space that presents a harmonious blend of lawn and a delightful patio, making it the perfect setting for alfresco dining and creating unforgettable memories with loved ones. The location of this property is as exceptional as the home itself. Situated within the Chineham area, residents have easy access to local amenities, including a gym, a short walk to the Chineham Arms public house, and plenty of walks/green space. A nearby shopping centre with retail outlets, doctors, a dentist, and highly recommended schools adds to the appeal of the area. For those who enjoy the vibrancy of town life, Basingstoke town centre is just a short drive away, offering a wide range of retail and recreational facilities, bars, and restaurants.







- FAMILY HOME
- SPACIOUS MODERN KITCHEN
- EXPANSIVE LIVINGROOM WITH BI-FOLD DOORS
- FOUR DOUBLE BEDROOMS
- TWO BATHROOMS
- SOUTH FACING GARDEN
- PRIVATE GARDEN WITH A PATIO
- PARKING FOR SEVERAL CARS
- INTERGRATED APPLIANCES
- WALKING DISTANCE TO LOCAL AMENITIES



 rightmove.co.uk  
The UK's number one property website

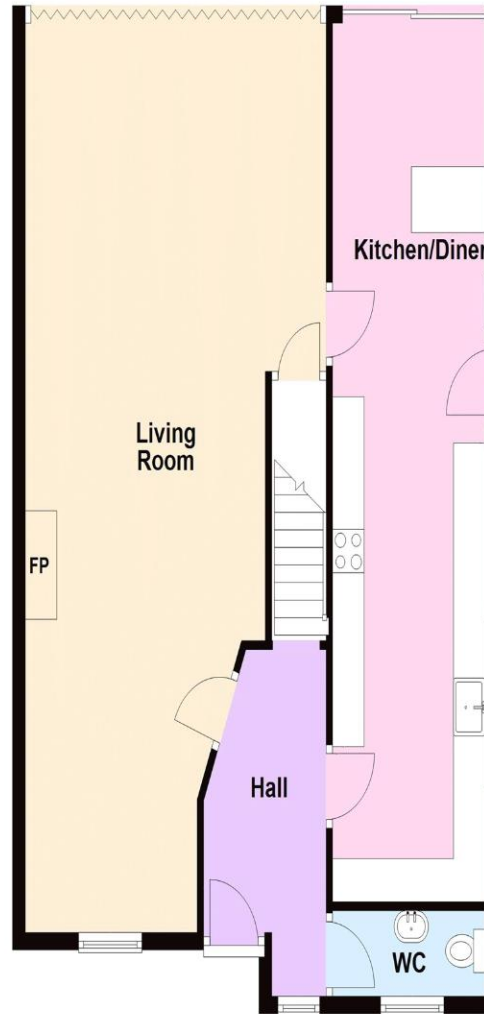
 twitter

 Find us on  
Facebook

 The Property  
Ombudsman

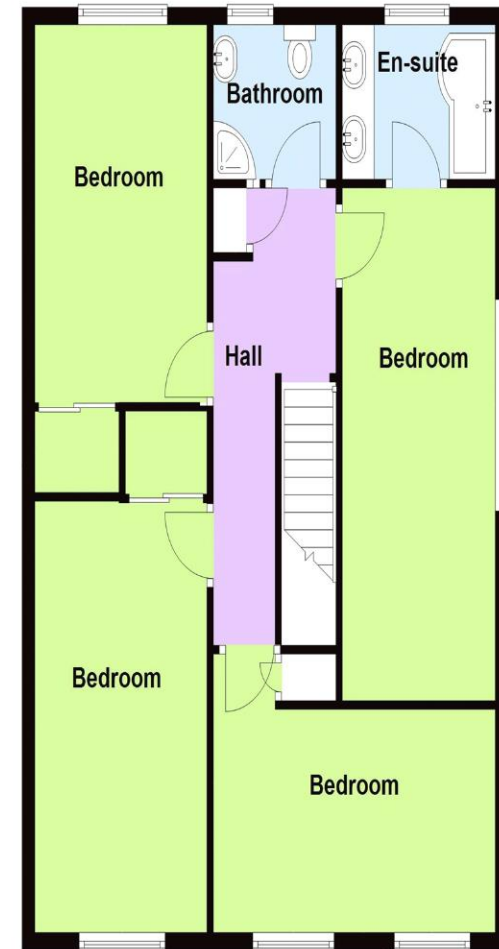
### Ground Floor

Approx. 78.4 sq. metres (843.9 sq. feet)



### First Floor

Approx. 71.8 sq. metres (772.3 sq. feet)



Total area: approx. 150.2 sq. metres (1616.2 sq. feet)

All images used are for illustrative purposes only and are intended to convey the concept and vision for the property. They are provided as a guide only, and should be used as such. Floor plans are intended to give a general indication of the properties layout only. All images and dimensions are not intended to form part any contract or warranty.

Plan produced using PlanUp.

LODDON PROPERTIES  
TEL: 01256 808 454

Chineham Shopping Centre Reading Road Chineham Basingstoke Hampshire  
RG24 8BQ  
info@loddonproperties.com  
www.loddonproperties.com