



**Beech Close, Tadley, Hampshire, RG26 5UN**

**Offers Over: £575,000**

LODDON PROPERTIES is presents this four bedroom detached home. The entrance provides access to the cloakroom, under-stair storage, and a well-proportioned living room featuring a charming fireplace. The living room had bi-fold doors to the open plan layout with velux windows. The fully equipped kitchen is a culinary haven, complete with modern appliances including a fridge-freezer, dishwasher, oven, and hob, while the adjacent dining area offers ample space for family gatherings and socialising. The double patio doors open out to the garden, creating a harmonious blend of indoor-outdoor living, ideal for entertaining and relaxation. On the first floor, you will find a large family bathroom with a shower over the bath, serving three generously sized bedrooms, one of which benefits from an en-suite shower room and built-in wardrobes. The master bedroom, situated on the upper floor, boasts a modern en-suite shower room, fitted wardrobes, and ample eave storage, reflecting the thoughtful design and practicality of the home. Outside, the property features a delightful patio area, perfect for alfresco dining and entertaining, with the remainder of the garden laid to lawn, providing ample space for outdoor activities. A rather big benefit of this property is that the garden is not overlooked and looks out on to a woodland copse. Additionally, the property offers convenient side access to the double garage and a generously sized driveway.





- FOUR BEDROOM DETACHED HOME
- GENEROUS LIVING ROOM
- LIGHT AND SPACIOUS THROUGHOUT
- OPEN PLAN KITCHEN/DINING ROOM
- FITTED WARDROBES AND EN-SUITE
- LARGE FAMILY BATHROOM
- EXPANSIVE MASTER BEDROOM SUITE
- ENCLOSED REAR GARDEN
- GARAGE AND DRIVEWAY PARKING
- CUL-DE-SAC LOCATION





 **rightmove**.co.uk  
The UK's number one property website

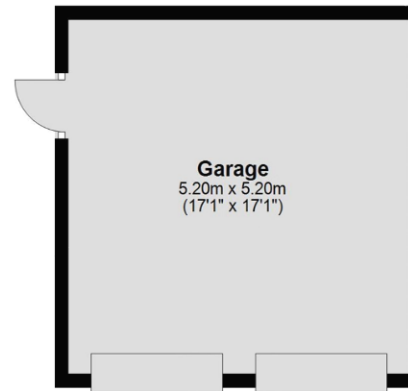
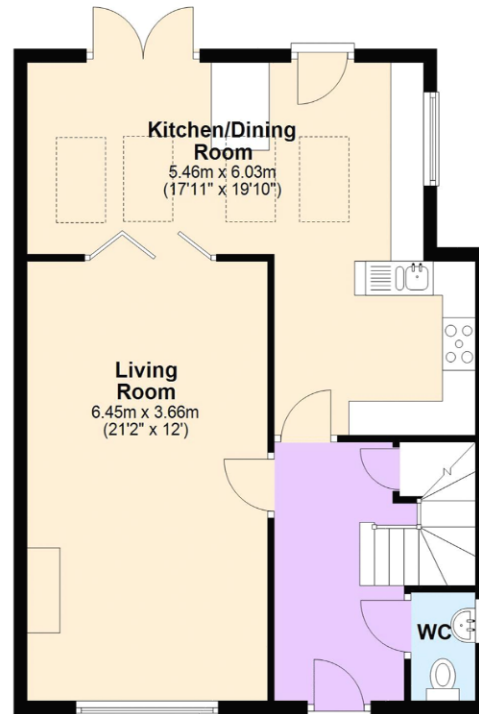


 Find us on  
**Facebook**



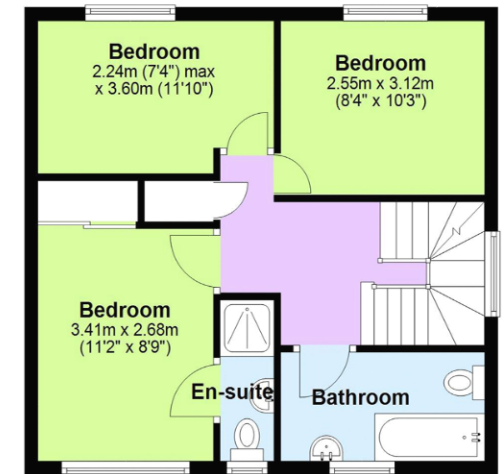
### Ground Floor

Approx. 88.8 sq. metres (955.6 sq. feet)



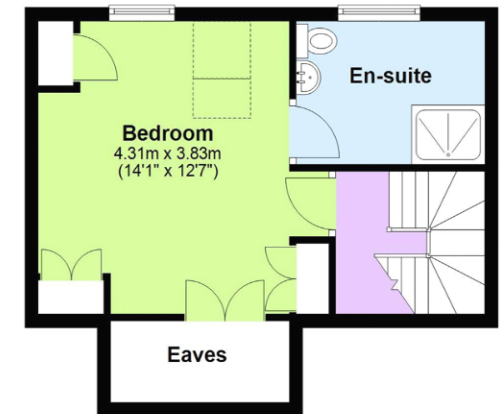
### First Floor

Approx. 44.7 sq. metres (480.8 sq. feet)



### Second Floor

Approx. 32.9 sq. metres (354.3 sq. feet)



Total area: approx. 166.4 sq. metres (1790.6 sq. feet)

All images used are for illustrative purposes only and are intended to convey the concept and vision for the property. They are provided as a guide only, and should be used as such. Floor plans are intended to give a general indication of the properties layout only. All images and dimensions are not intended to form part any contract or warranty. Plan produced using PlanUp.

**LODDON PROPERTIES**  
TEL: 01256 808 454

Chineham Shopping Centre Reading Road Chineham Basingstoke Hampshire  
RG24 8BQ  
info@loddonproperties.com  
www.loddonproperties.com