



Belle Vue Road, Old Basing, Basingstoke, Hampshire, RG24 7JP

Offers Over: £600,000

As you enter, you'll be greeted by an impressive hallway that sets the stage for the rest of the house. The cloakroom and spacious living room, with its traditional fireplace and bay window, create a warm and inviting atmosphere filled with natural light. The separate dining room, adorned with two sets of patio doors, seamlessly connects the indoor and outdoor spaces, providing a wonderful setting for entertaining guests or enjoying family meals. The heart of this home lies in the open plan kitchen/breakfast room, where every culinary desire can be fulfilled. Equipped with a double butler sink, beautiful range cooker, integrated fridge/freezer, and ample marble counter space, this kitchen is a chef's dream. The large island offers additional counter space and storage, creating a central gathering point for family and friends. Accessible from the kitchen, the utility room adds another layer of convenience to your daily routine. On the upper level, four generously-sized bedrooms await, each offering a tranquil haven for rest and relaxation. The modern bathroom with built-in storage and a shower over the bath adds a touch of luxury to your daily routine. Step outside into the meticulously maintained garden, a serene oasis that will surely impress. Whether you choose to lounge on the decked area or enjoy a family gathering on the lush lawn, this outdoor space is perfect for creating lasting memories. Side access to the front of the property leads you to a driveway with ample parking for multiple vehicles, ensuring ease and convenience for you and your loved ones.



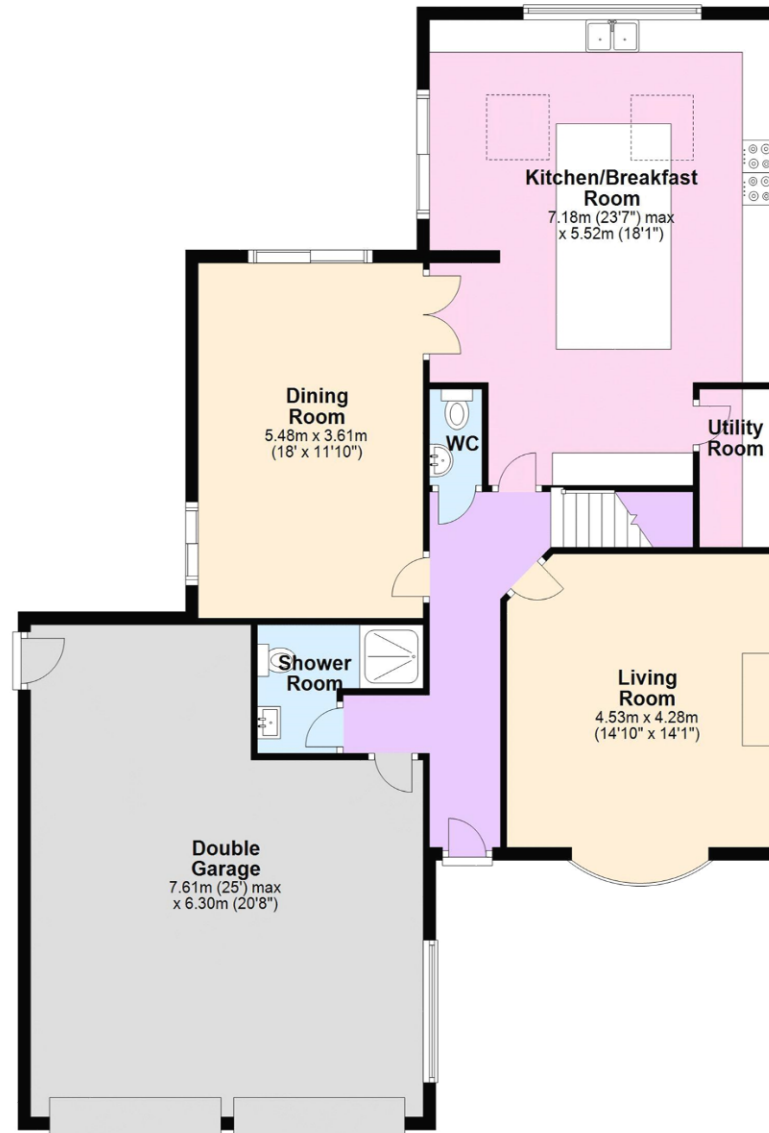


- FOUR BEDROOM LINK DETACHED HOME
- LIVING ROOM WITH BAY WINDOW & FIREPLACE
- DOWNSTAIRS SHOWER ROOM
- SEPARATE DINING ROOM
- OPEN PLAN KITCHEN/BREAKFAST ROOM
- UTILITY ROOM
- BATHROOM WITH SHOWER OVER BATH
- ENCLOSED PRIVATE GARDEN
- DOUBLE GARAGE AND DRIVEWAY PARKING
- SOUGHT AFTER LOCATION





Ground Floor



First Floor



All images used are for illustrative purposes only and are intended to convey the concept and vision for the property. They are provided as a guide only, and should be used as such. Floor plans are intended to give a general indication of the properties layout only. All images and dimensions are not intended to form part any contract or warranty.
Plan produced using PlanUp.

LODDON PROPERTIES
TEL: 01256 808 454

Chineham Shopping Centre Reading Road Chineham Basingstoke Hampshire
RG24 8BQ
info@loddonproperties.com
www.loddonproperties.com