



3 Sandiway Road, Handforth, Wilmslow, SK9 3SN

mosley jarman

3 Sandiway Road, Handforth, Wilmslow, SK9 3SN

£1,500 Per Calendar Month

- Heating - Gas Central Heating
- Mains - Gas, Electric, water and drainage
- EPC rating - C (71/83)
- Council Tax Band - B (Cheshire East)
- *Flood risk - Very Low (Surface water)
- *Broadband - Openreach, Virgin Media and Brsk. You may also be able to obtain broadband service from these Fixed Wireless Access providers covering your area: EE
- *Mobile - Limited coverage by EE and Three. Likely coverage by O2, Vodafone.
- * Information provided by Ofcom checker and isn't guaranteed. Mosley Jarman take no responsibility for inaccuracies and advise potential tenants to do their own checks before committing to renting the property. ** Information provided by GOV.UK
- Driveway to the front



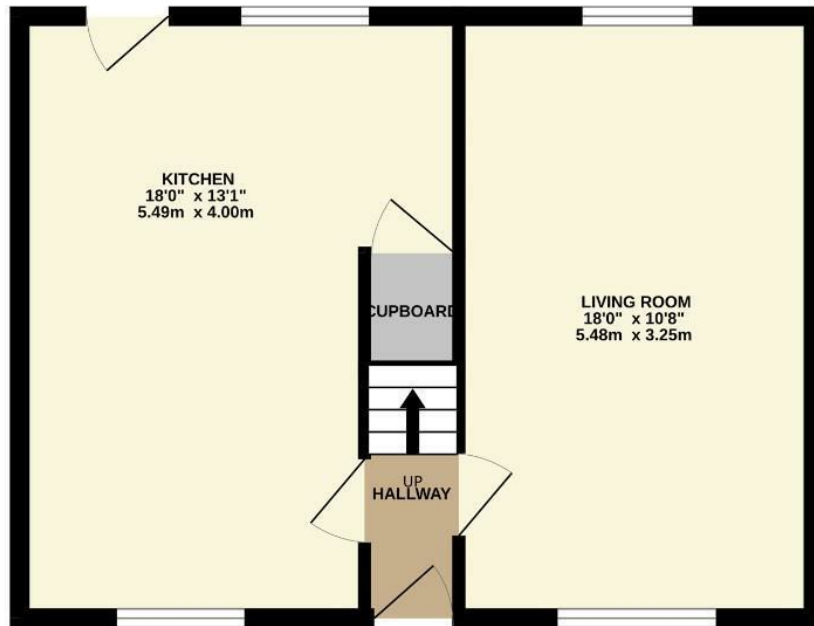
3 Sandiway Road, Handforth, Wilmslow, SK9 3SN

Per Calendar Month £1,500 Per Calendar Month

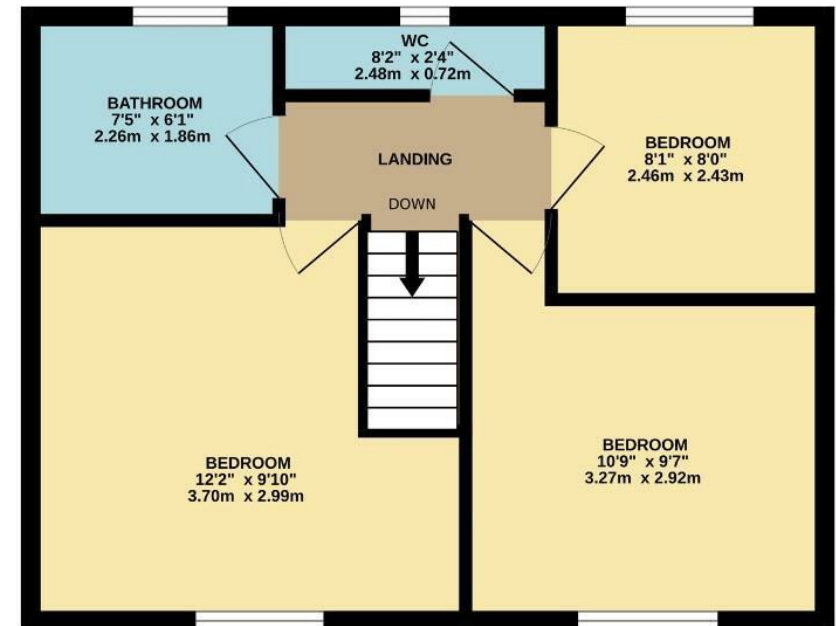
A recently refurbished three-bedroom mid terrace home, situated in a popular location just a short walk from Handforth village and within convenient reach of Handforth train station. The accommodation includes an entrance hallway, spacious lounge, kitchen/dining room (fully fitted complete with fridge/freezer, dishwasher and washing machine). On the first floor there are three good-sized bedrooms, bathroom and a separate wc. To the front of the property there is a new driveway, and to the rear a turfed and enclosed garden with shed for storage. Gas central heating and double glazed. UNFURNISHED. AVAILABLE IMMEDIATELY.



GROUND FLOOR
427 sq.ft. (39.7 sq.m.) approx.



1ST FLOOR
429 sq.ft. (39.8 sq.m.) approx.



TOTAL FLOOR AREA : 856 sq.ft. (79.5 sq.m.) approx.

Whilst every attempt has been made to ensure the accuracy of the floorplan contained here, measurements of doors, windows, rooms and any other items are approximate and no responsibility is taken for any error, omission or mis-statement. This plan is for illustrative purposes only and should be used as such by any prospective purchaser. The services, systems and appliances shown have not been tested and no guarantee as to their operability or efficiency can be given.
Made with Metropix ©2026