



10 Cavendish Mews, Wilmslow, Cheshire, SK9 1PW

mosley jarman

10 Cavendish Mews, Wilmslow, Cheshire, SK9 1PW

£1,475 Per Calendar Month

- Well appointed middle-mews home
- Central Wilmslow location
- Hall with downstairs WC
- Living room
- Fitted dining kitchen
- Two bedrooms
- Fitted bathromm with shower
- Gardens and allocated garage
- EPC rating: C
- Council Tax band: E (Cheshire East)



10 Cavendish Mews, Wilmslow, Cheshire, SK9 1PW

Per Calendar Month £1,475 Per Calendar Month

A well appointed two bedroom middle-mews home located within Central Wilmslow, and a short walk to the shops, restaurants and bars. Gardens and allocated garage. Ideal for single occupants or couples. Only a short walk to the shops, restaurants and bars. The accommodation briefly comprises; Entrance hall with downstairs WC, living room and fully fitted dining kitchen including white goods. On the first floor a landing provides access to two bedrooms and a fitted bathroom with shower over the bath. Gardens are provided to both the front and rear, and parking is by way of an allocated garage. UNFURNISHED. AVAILABLE: IMMEDIATELY

IMPORTANT INFORMATION

Parking: Single garage in block. As you look at the block of garages face on, its the third one along from the left

Heating: Gas

Mains: Gas, Electric, Water

Refuse - Cheshire East Council operate a chargeable garden waste disposal service. For full details please visit cheshireeast.gov.uk/gardenbin

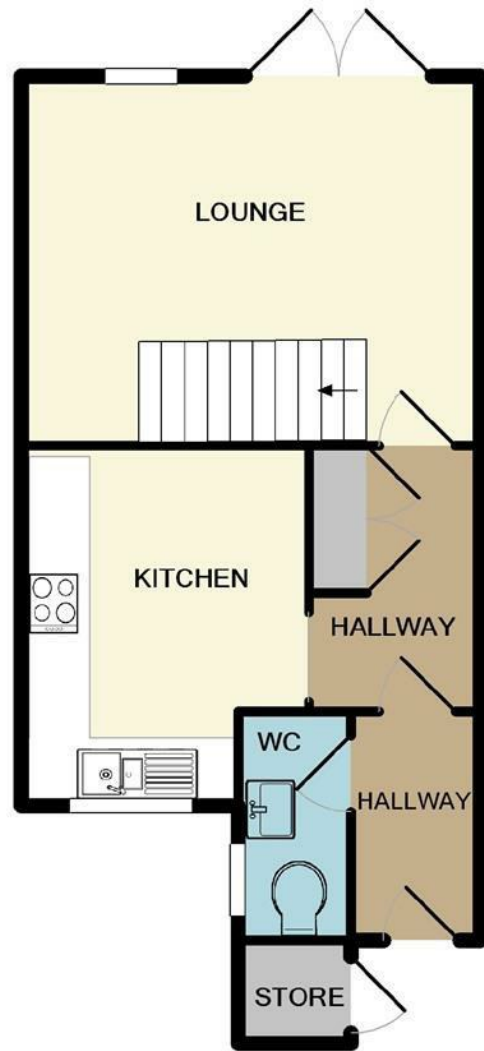
Broadband providers - Openreach. You may also be able to obtain broadband service from these Fixed Wireless Access providers covering your area for EE and Three

Mobile providers - Likely coverage by O2, EE, Three and Vodafone

**Information provided by Ofcom checker.

The information isn't guaranteed. Mosley Jarman take no responsibility for inaccuracies and advise potential tenants to do their own checks before committing to let the property.





GROUND FLOOR



1ST FLOOR

Whilst every attempt has been made to ensure the accuracy of the floor plan contained here, measurements of doors, windows, rooms and any other items are approximate and no responsibility is taken for any error, omission, or mis-statement. This plan is for illustrative purposes only and should be used as such by any prospective purchaser. The services, systems and appliances shown have not been tested and no guarantee as to their operability or efficiency can be given
 Made with Metropix ©2015