

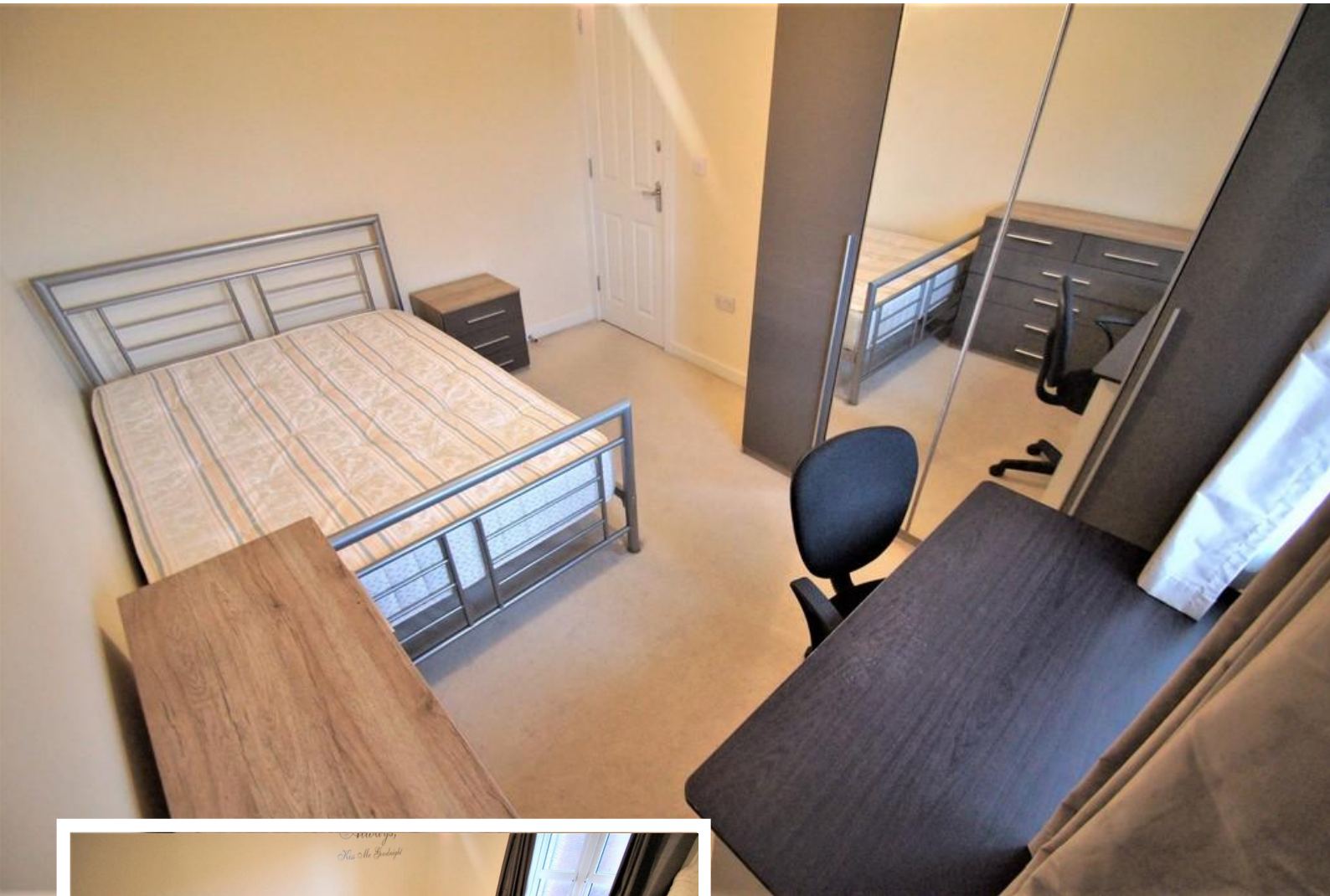


18 Dragoon Road
Stoke Village, Coventry, CV3 1PD

- Modern Semi Detached
- 4 Bedrooms
- Double Glazing
- Gas Central Heating

Price £275,000 (Offers over)
EPC Rating '78'





Property Description

DESCRIPTION

A Modern Four Bedroomed, three storey Semi Detached dwelling situated in popular Stoke Village to the west of the City Centre.

Benefitting from Gas Central Heating and Double Glazing In brief the property comprises; entrance hallway, guest. WC, Lounge, a well-appointed Kitchen, the 4 Bedrooms (including a master en suite shower) and a Family Bathroom.

Externally enjoy the convenience of low-maintenance rear garden plus a small fore garden.

There is off road parking provided in turn leading to a and a single garage.

The property is situated close to excellent local amenities, good transport links and local schools/centres of education.

Don't miss out - book your viewing today with the award



winning Cloud9 Estates!

LOUNGE

5.00m x 4.93m

KITCHEN

4.14m x 2.87m

MASTER BEDROOM

5.64m x 4.98m

BEDROOM TWO

3.84m x 2.82m



BEDROOM THREE

3.71m x 2.87m

BEDROOM FOUR

2.77m x 2.03m





Whilst every attempt has been made to ensure the accuracy of the floorplan contained here, measurements of floors, walls, rooms and any other items are approximate and no responsibility is taken for any error. Dimensions in the floorplans are for guidance purposes only and should be used as a guide only. No guarantee is given as to their accuracy or efficiency can be given. Made with Mortgage i2025

Energy Efficiency Rating		
	Current	Potential
Very energy efficient - lower running costs		
(92+) A		
(81-91) B		89
(69-80) C	78	
(55-68) D		
(39-54) E		

108 Walsgrave Road
Coventry
Warwickshire
CV2 4ED

www.douglasestates.co.uk
02476 263 660

Agents Note: Whilst every care has been taken to prepare these sales particulars, they are for guidance purposes only. All measurements are approximate and for general guidance purposes only and whilst every care has been taken to ensure their accuracy, they should not be relied upon and potential buyers are advised to recheck the measurements