



SCAN ME

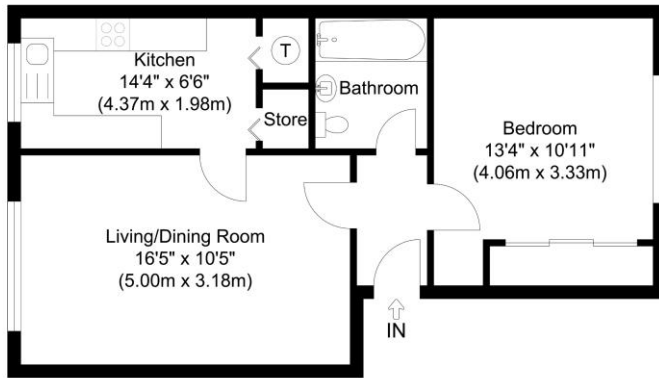
**Apartment**

Beds 1, Baths 1, Lounges 1



**Oakley Close, Isleworth, TW7**

**£230,000 Share of Freehold**



Ground Floor  
Approximate Floor Area  
484.16 sq. ft.  
(44.98 sq. m)

Oakley Close, Isleworth, TW7

Illustration for identification purposes only, measurements are approximate, not to scale.



## Property Description

**Property Description** - A ground floor apartment set off Thornbury Road on the Isleworth Osterley border. Features include no onward chain, communal gardens to front and rear, near Isleworth Train & Osterley Tube.

**Accommodation** - The accommodation comprises building entrance with secure entry phone system into communal hallway. This then leads to the front door and entrance lobby with storage cupboard. There is a long lounge which has a tall almost full height window and carpeted floor. The kitchen is well fitted with units along two walls, breakfast bar and large storage cupboards. The bedroom is large with carpeted floors, built in wardrobes door and a tall almost full height window. Finally the bathroom is partially tiled and has a bathtub.

**Outside Areas** - To the outside the property benefits from a good sized communal gardens to front and rear.

**Transport Links & Nearby** - Set a quiet road off Thornbury Road you are within walking distance of Isleworth National Rail and Osterley Tube. Nearby schools include Nishkam, Marlborough, Bolder Academy & The Green School whilst the coffee houses and shops at Isleworth Village are also nearby as is Osterley Park.

**Additional Information** - Property: Tenure – Share of Freehold, Lease length 999 years unexpired from 2003. Ground Rental £0 per annum. Service charge £652.18 per annum. Council Tax - Band C (London Borough of Hounslow) £1557 per annum. EPC rating - E.



Woodlands Estates,  
16 St Johns Road, Isleworth,  
Middlesex, TW7 6NW

www.woodlandsestates.com  
020 8560 3228  
mail@woodlandsestates.com

Agents Note: Whilst every care has been taken to prepare these sales particulars, they are for guidance purposes only. All measurements are approximate and for general guidance purposes only and whilst every care has been taken to ensure their accuracy, they should not be relied upon and potential buyers are advised to recheck the measurements.

Follow us on Social Media

