



Apartment

Beds 2, Baths 2, Lounges 1



Academy Place, Isleworth, TW7

£375,000 Leasehold



Property Description

PROPERTY DESCRIPTION

Two bed First-Floor Apartment in Gated Development – No Chain! Academy Place, Isleworth, TW7

A well-presented and chain free two-bedroom, two-bathroom first-floor apartment set within the prestigious Academy Place gated development. Surrounded by landscaped gardens and benefiting from secure entryphone access, this home offers a bright and spacious layout with modern fittings, just moments from Isleworth Station and Osterley Underground (Piccadilly Line). Ideal for first-time buyers, downsizers, or investors seeking a convenient yet tranquil setting.

Layout Summary

The apartment spans 62sqm/670 sqft and is arranged on the first floor with a practical, modern layout. It features an open-plan kitchen, dining, and lounge area with a Juliet balcony, creating a bright and sociable living space. The main bedroom is generously sized and includes custom built-in wardrobes and an en suite shower room, while the second bedroom also benefits from bespoke storage. A family bathroom is positioned off the central hallway, completing this well-designed two-bedroom, two-bathroom home.

Green Spaces & Leisure

-  Osterley Park & House (National Trust) & Syon Park
-  Wyke Green Golf Club – 18-hole parkland course
-  Thistleworth Tennis & Social Club – Coaching & events
-  Indian Gymkhana Club – Historic multi-sport venue
-  Jersey Gardens – Tranquil 4-acre park
-  Osterley Sports & Athletics Centre – Track & fitness facilities
-  Riverside walks along Old Isleworth & Thames Path





🚶 Transport & Connectivity

- 🚇 Osterley Underground (Piccadilly Line) – 10 mins walk
- 🚆 Isleworth Rail Station – 15 mins walk
- 🚌 Multiple bus routes nearby
- 🚗 Easy access to A4/M4, Heathrow & Central London

🎓 Schools & Education

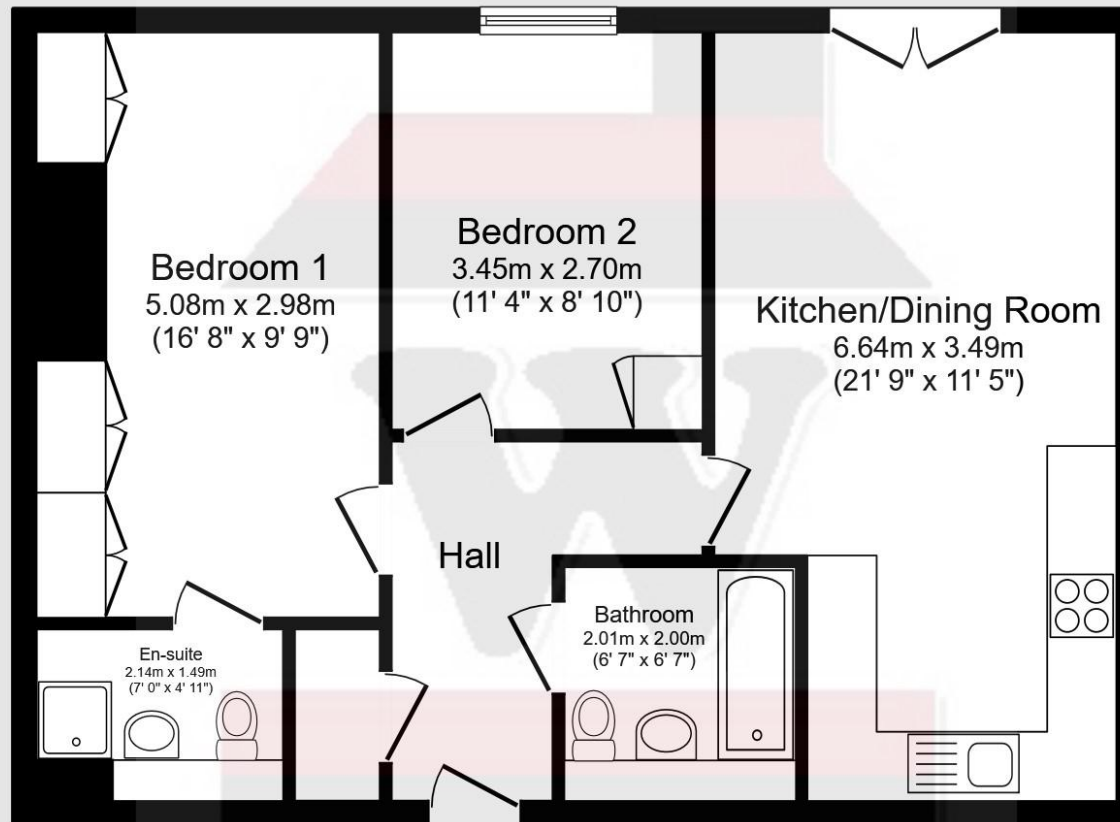
- 🏫 Nishkam School West London – Outstanding
- 🏫 Isleworth & Syon School for Boys – Good
- 🏫 The Green School for Girls & Boys – Good
- 🏫 Bolder Academy – Good Ofsted
- 🏫 Spring Grove Primary – Outstanding
- 🏫 Isleworth Town Primary – Good
- 🏫 West Thames College – Further Education

📄 Additional Information

- **Tenure:** Leasehold
- **Lease Length:** 107 years remaining
- **Service Charge:** £2,139.72 p/a
- **Ground Rent:** included within service charge
- **Size:** Approx: 670 sq ft / 62 sq m
- **EPC rating:** C
- **Council Tax:** Band C (London Borough of Hounslow) - £1854 p/a



Academy Place, Isleworth, TW7 5FE



First Floor
Floor area 62.5 sq.m. (673 sq.ft.)

Total floor area: 62.5 sq.m. (673 sq.ft.)

This floor plan is for illustrative purposes only. It is not drawn to scale. Any measurements, floor areas (including any total floor area), openings and orientations are approximate. No details are guaranteed, they cannot be relied upon for any purpose and do not form any part of any agreement. No liability is taken for any error, omission or misstatement. A party must rely upon its own inspection(s). Powered by www.Propertybox.io



Woodlands Estates,
16 St Johns Road, Isleworth,
Middlesex, TW7 6NW

www.woodlandsestates.com
020 8560 3228
mail@woodlandsestates.com

Agents Note: Whilst every care has been taken to prepare these sales particulars, they are for guidance purposes only. All measurements are approximate are for general guidance purposes only and whilst every care has been taken to ensure their accuracy, they should not be relied upon and potential buyers are advised to recheck the measurements.

Follow us on Social Media

