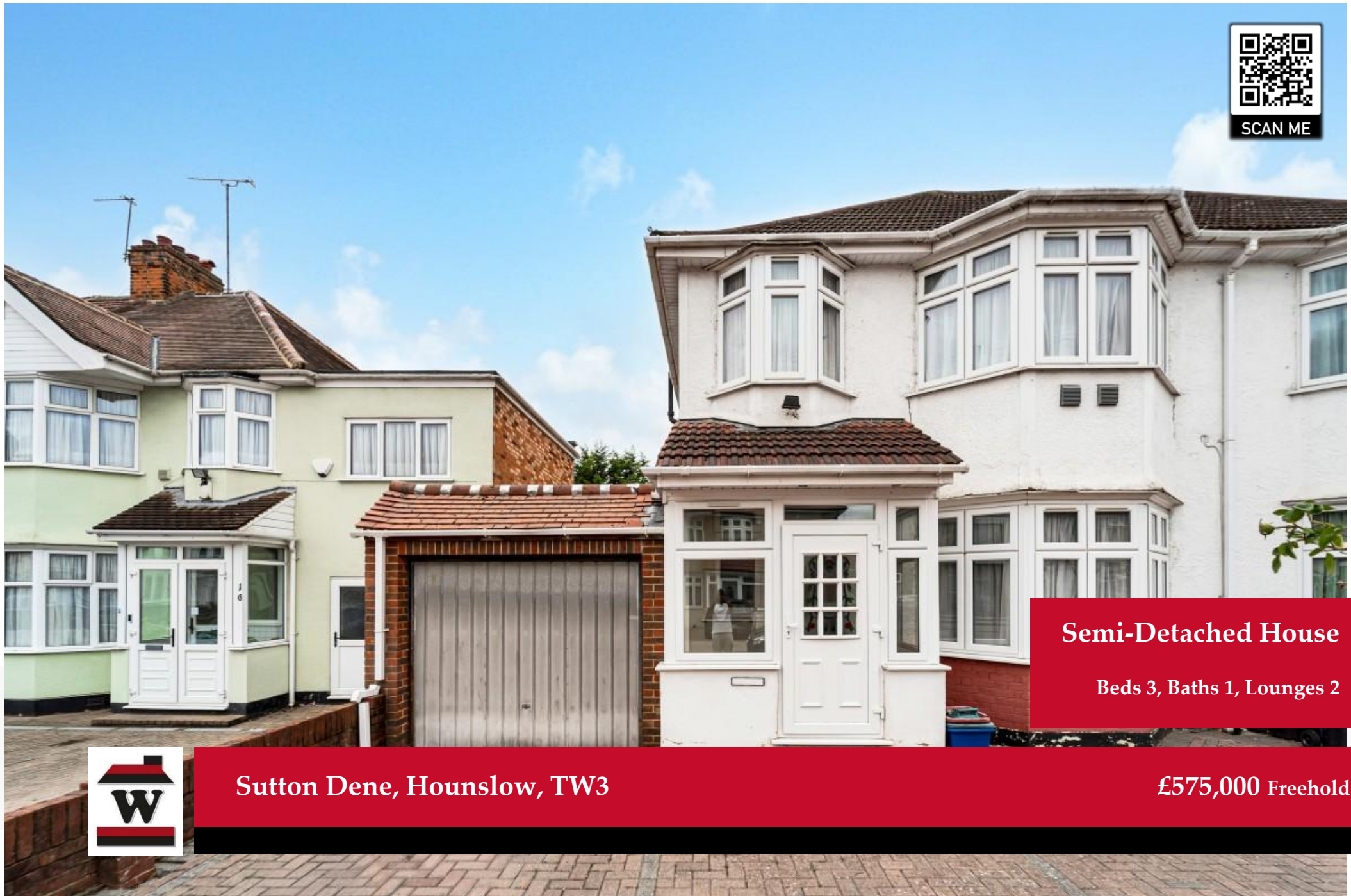




SCAN ME



**Semi-Detached House**

**Beds 3, Baths 1, Lounges 2**



**Sutton Dene, Hounslow, TW3**

**£575,000 Freehold**





## Property Description

### Property Description

#### Charming 1930s Three-Bedroom Semi-Detached Home

Tucked away on a quiet cul-de-sac in Hounslow, this charming 1930s semi-detached home offers a rare chance to create a bespoke living space in a sought-after location. Sold chain-free, it's a blank canvas ready for transformation — whether you're dreaming of open-plan living, a stylish extension (STPP), or simply a warm family home. With Osterley Tube Station just a short walk away, and green parks, cafés, and leisure clubs nearby, this property blends suburban calm with vibrant local lifestyle.

**We would also note that Woodland are instructed to market the adjoining semi-detached property thus presenting a rare chance to acquire and craft a home of considerable size (with a plot width circa 60ft/18m wide).**

### ✦ Key Features

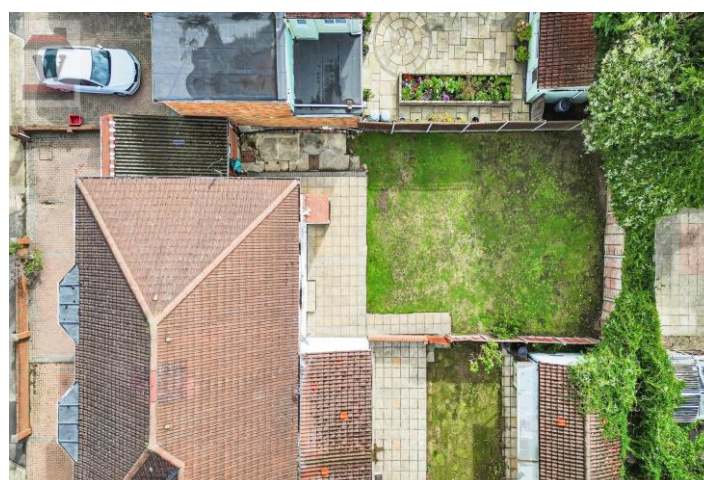
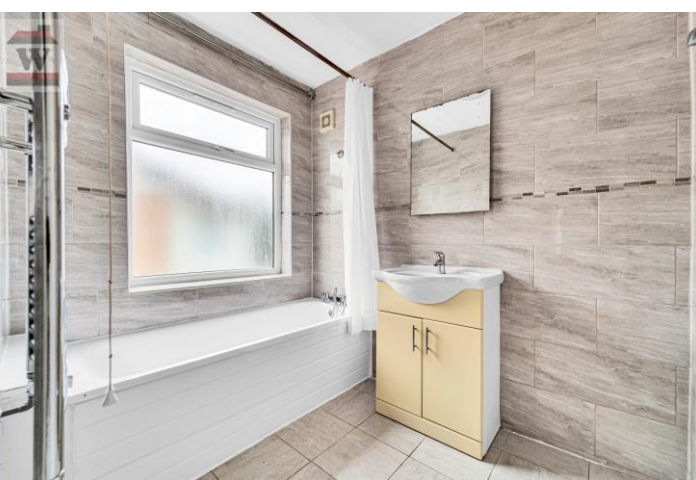
- Chain-free sale – no onward chain
- Quiet cul-de-sac setting
- 1930s character semi-detached home
- Three bedrooms across two floors
- Spacious living and dining areas
- Side garage with conversion potential
- 3-car driveway
- Additional store room
- Scope to extend (subject to planning permission)
- Approx. 1305 sq ft including garage
- Walking distance to Osterley Tube Station
- Close to green spaces, schools, and major transport links
- Excellent potential for renovation and personalisation

### Interior & Layout

Ground Floor:







- Bright living room with bay window
- Separate dining room ideal for entertaining
- Functional kitchen with scope to modernise
- Side garage and store room

#### First Floor:

- Two spacious double bedrooms
- One single bedroom
- Family bathroom

#### 🌳 Green Spaces & Leisure

- Osterley Park & House
- Lampton Park
- Hounslow Heath
- Osterley Sports Centre

#### 🚆 Transport & Connectivity

- Osterley Tube Station (Piccadilly Line) – Direct to Central London
- Quick access to A4/M4 for commuting
- Heathrow Airport – Just 15 minutes away
- Multiple bus routes and cycle paths nearby

#### 🏢 Employment & Education

##### Major Employers Nearby:

- Heathrow Airport, West London NHS Trust, Home Office, and Hounslow Business Park

##### Schools:

- Lampton Academy – Highly rated secondary
- Hounslow Heath Primary & Junior Schools
- Nishkam School West London – All-through school with excellent reputation

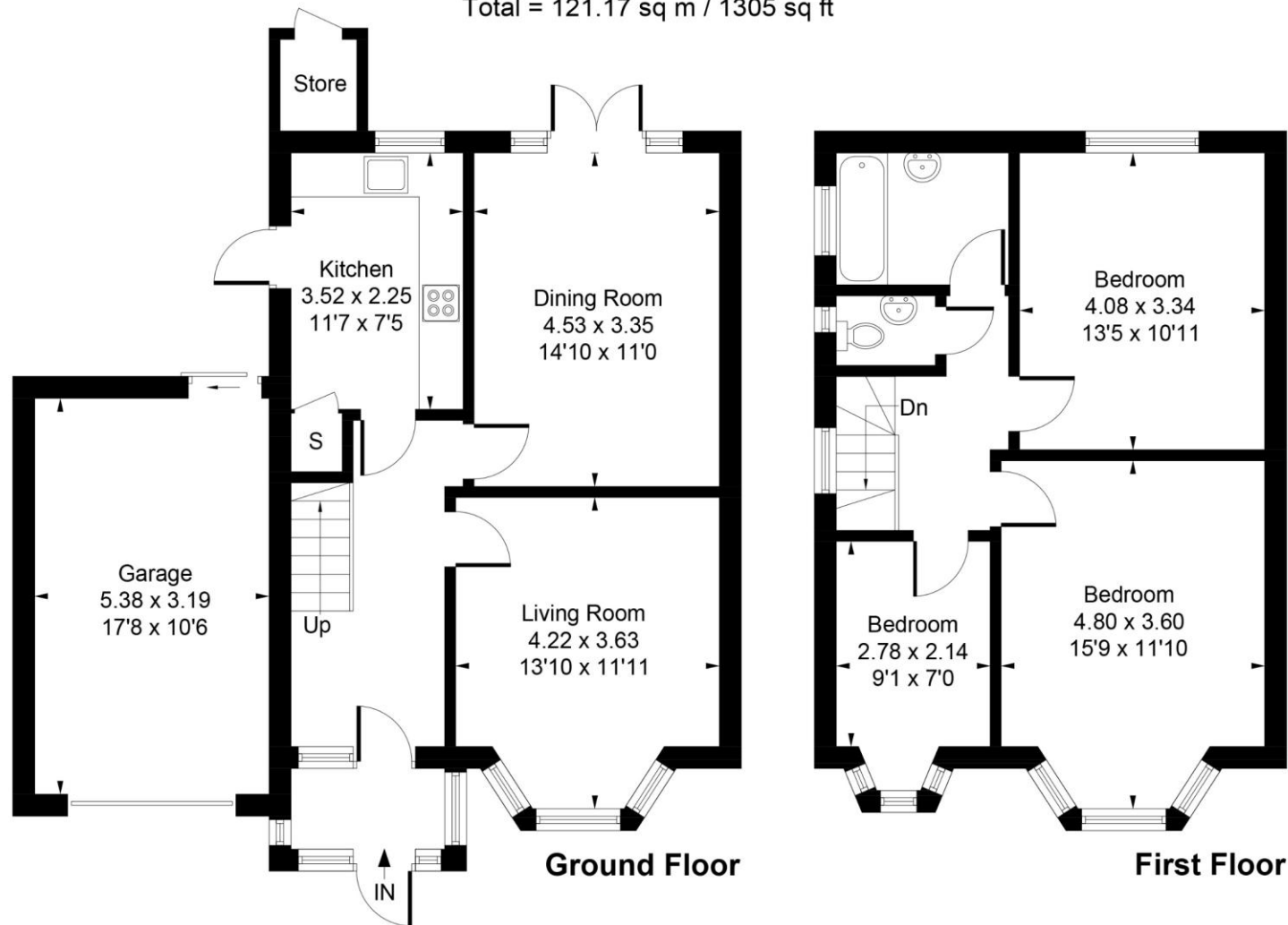
#### 📄 Additional Information

- Tenure: Freehold
- Size: Approx. 1305 sq ft / 121 sq m (inc garage)
- Council Tax: Band E (London Borough of Hounslow) - £2549 p/a
- EPC Rating: E

Approximate Gross Internal Area (Including Store) = 103.46 sq m / 1114 sq ft

Garage = 17.71 sq m / 191 sq ft

Total = 121.17 sq m / 1305 sq ft



Whilst every attempt has been made to ensure the accuracy of the floor plan contained here, measurements of doors, windows, rooms and any other items are approximate and no responsibility is taken for any error, omission, or mis-statement. This plan is for illustrative purposes only and should be used as such by any prospective purchase.



**Woodlands Estates,**  
16 St Johns Road, Isleworth,  
Middlesex, TW7 6NW

[www.woodlandsestates.com](http://www.woodlandsestates.com)  
020 8560 3228  
[mail@woodlandsestates.com](mailto:mail@woodlandsestates.com)

Agents Note: Whilst every care has been taken to prepare these sales particulars, they are for guidance purposes only. All measurements are approximate are for general guidance purposes only and whilst every care has been taken to ensure their accuracy, they should not be relied upon and potential buyers are advised to recheck the measurements.

Follow us on Social Media

