



**Apartment**

**Beds 2, Baths 1, Lounges 1**



**Taylor Close, Osterley, TW3**

**£299,950 Freehold**



## Property Description

### Property Description

A ground floor apartment set off Gresham Road in Osterley on a quiet cul-de-sac. Features include no onward chain, fitted wardrobes to bedrooms, allocated parking space, communal gardens, near Isleworth Train & Osterley Tube.

### Accommodation

The accommodation comprises building entrance with secure entry phone system into communal hallway. This then leads to the front door and entrance lobby with storage cupboard. Long lounge which has wooden flooring and a large bay window with opening into kitchen. Well fitted kitchen with units along three walls and appliances. Large main bedroom with extensive fitted wardrobes and wooden flooring. Second bedroom with fitted wardrobe and wooden flooring. Finally there is three piece bathroom which is fully tiled.



### Outside Areas

To the outside the property benefits from a good sized communal gardens to front and rear, there is allocated parking in a courtyard outside.

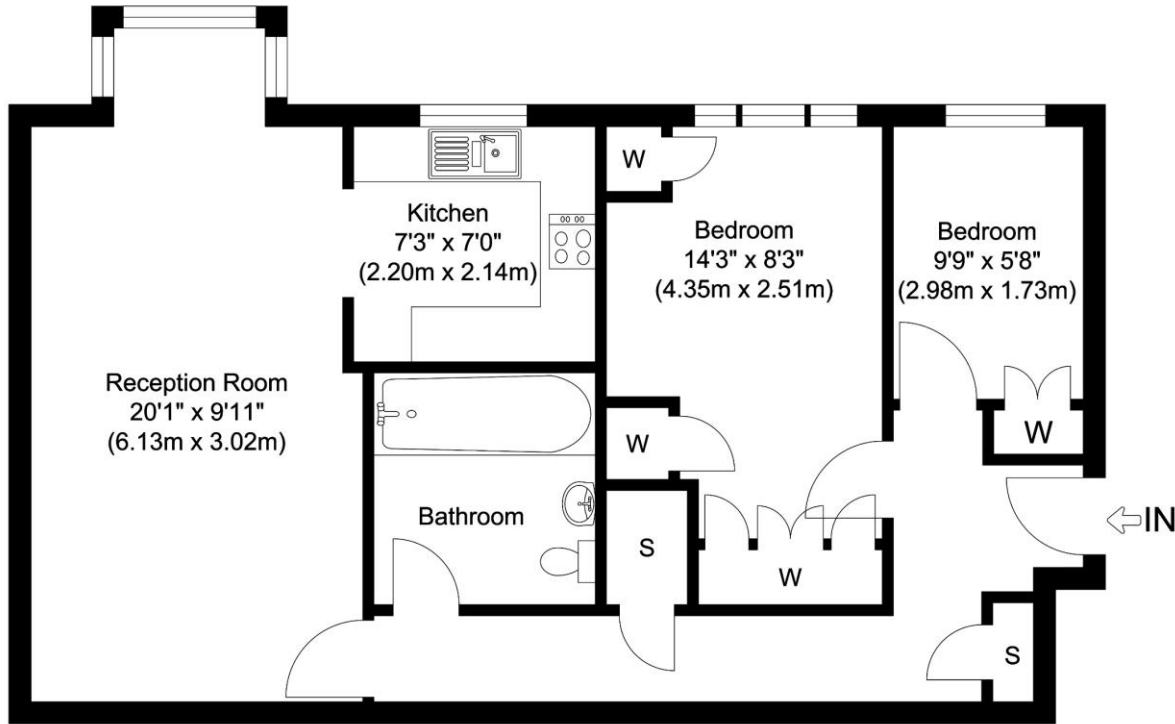


## Transport Links & Nearby

Set a quiet road off Gresham Road you are within walking distance of Osterley Tube with Isleworth National Rail nearby. You have Hounslow Town Centre and the shops at Isleworth Village nearby as is Osterley Park.

## Additional Information

Property: Tenure – Leasehold, Lease length 95 years unexpired. Ground Rental £380 per annum. Service charge £1479.00 per annum. Council Tax - Band C (London Borough of Hounslow) £1672 per annum. EPC rating - D.



Total Gross Internal Area  
 547.00 sq. ft.  
 (50.80 sq. m)

### Clover House, Taylor Close, Osterley, TW3

Illustration for identification purposes only, measurements are approximate, not to scale.



Woodlands Estates,  
 16 St Johns Road, Isleworth,  
 Middlesex, TW7 6NW

www.woodlandsestates.com  
 020 8560 3228  
 mail@woodlandsestates.com

Agents Note: Whilst every care has been taken to prepare these sales particulars, they are for guidance purposes only. All measurements are approximate are for general guidance purposes only and whilst every care has been taken to ensure their accuracy, they should not be relied upon and potential buyers are advised to recheck the measurements.

Follow us on Social Media

