



Charles Bainbridge



29 High Street, Bridge,
Canterbury, Kent, CT4 5JZ

£335,000







An attractive and deceptively spacious house set in the heart of the popular village of Bridge. The property has been recently redecorated and is well presented throughout offering comfortable accommodation including open plan sitting/dining room and an attractive kitchen to the rear. On the first floor are two bedrooms and an attractive bathroom with separate WC. To the top floor is a loft conversion providing a further double bedroom. The property benefits from gas fired central heating and double glazed windows and patio doors.

Externally the property has a rear garden with small patio and shingled area, opening up to a good sized lawned area.

The property is set in the centre of the popular village of Bridge yet with easy access to the surrounding countryside. Bridge offers a comprehensive range of local amenities including a mini-supermarket, pharmacy, dentist, and hairdresser. There are two public houses in the village, a modern health centre, and a popular primary school. The highly regarded Pig Hotel at Bridge Place is a handsome 17th century manor house providing a wonderful boutique-style hotel and restaurant in a delightful setting. The surrounding countryside provides good walking, riding, and cycling. The Cathedral City of Canterbury is easily accessible providing a comprehensive range of shopping, leisure, and educational facilities, as well as a regular High-Speed rail service from Canterbury West station to London St. Pancras with a journey time of approximately 55 minutes.

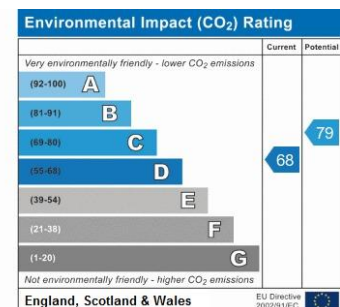
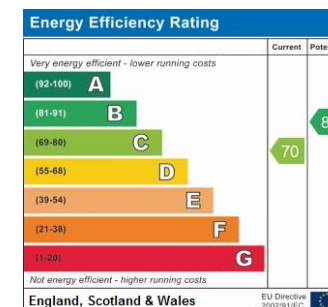
Services: All mains services are connected.

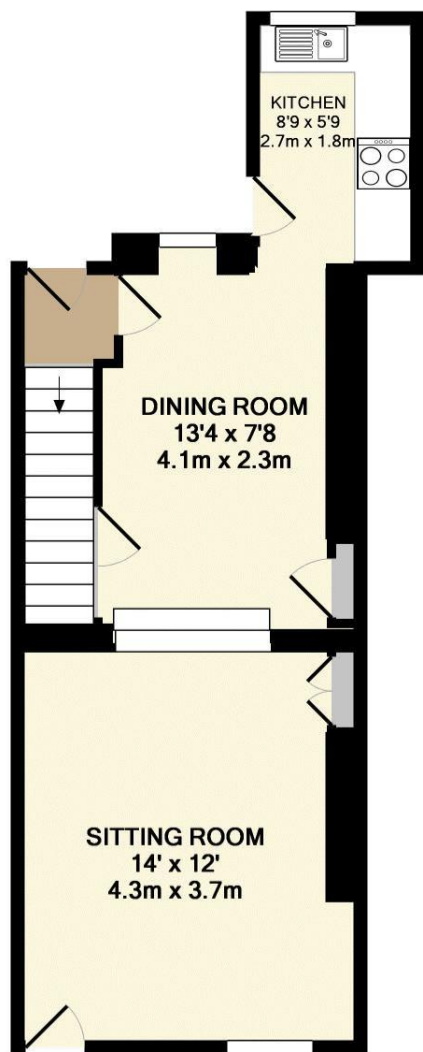
Tenure: Freehold

Council Tax Band: C

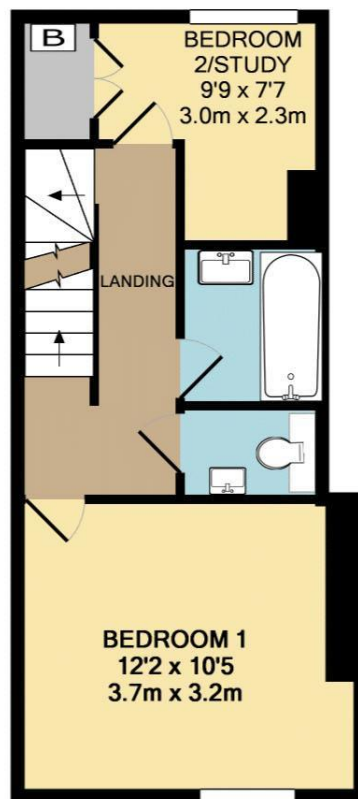
Local Authority: Canterbury City Council, Whitefriars, 14 Rose Lane,
Canterbury, Kent, CT1 2UR.

We would be pleased to arrange a viewing by appointment; simply call
01227 780227 or email sales@charlesbainbridge.com

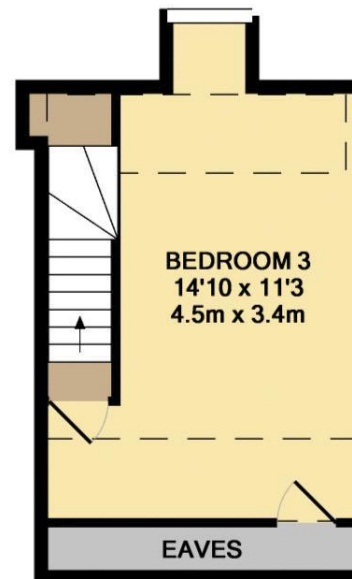




GROUND FLOOR
APPROX. FLOOR
AREA 358 SQ.FT.
(33.2 SQ.M.)



1ST FLOOR
APPROX. FLOOR
AREA 295 SQ.FT.
(27.4 SQ.M.)



2ND FLOOR
APPROX. FLOOR
AREA 203 SQ.FT.
(18.8 SQ.M.)

TOTAL APPROX. FLOOR AREA 856 SQ.FT. (79.5 SQ.M.)

Whilst every attempt has been made to ensure the accuracy of the floor plan contained here, measurements of doors, windows, rooms and any other items are approximate and no responsibility is taken for any error, omission, or mis-statement. This plan is for illustrative purposes only and should be used as such by any prospective purchaser. The services, systems and appliances shown have not been tested and no guarantee as to their operability or efficiency can be given
Made with Metropix ©2017













Should you require any specific clarification about any part of the property or its surroundings prior to booking a viewing, particularly before travelling a significant distance to view, then please contact us and we would be pleased to assist.

These particulars are intended to give a fair description of the property, their accuracy cannot be guaranteed and they do not constitute an offer of contract. No appliances or services have been tested by us. Interested parties are advised to rely on their own inspection of the property and those of their professional and legal representatives before entering a contract to purchase.



Charles Bainbridge

1 The Bakery, 47 Broad Street,
Canterbury, Kent CT1 2LS

01227 780227

sales@charlesbainbridge.com
charlesbainbridge.com