

HUNTERS®

HERE TO GET *you* THERE

Claret Gardens, London, SE25 6RR

£1,300

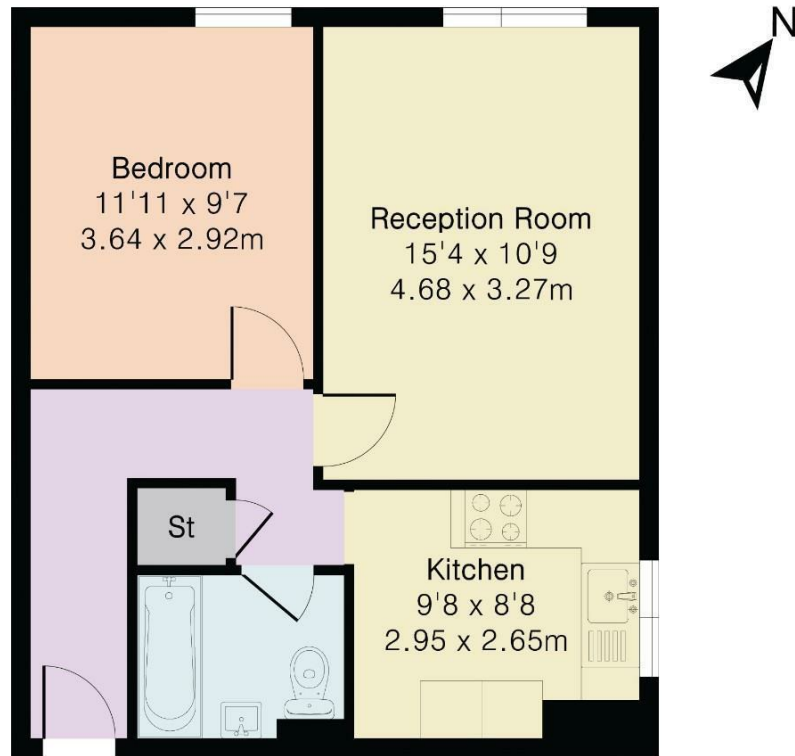
Property Images



Property Images



Approximate Gross Internal Area 498 sq ft - 46 sq m

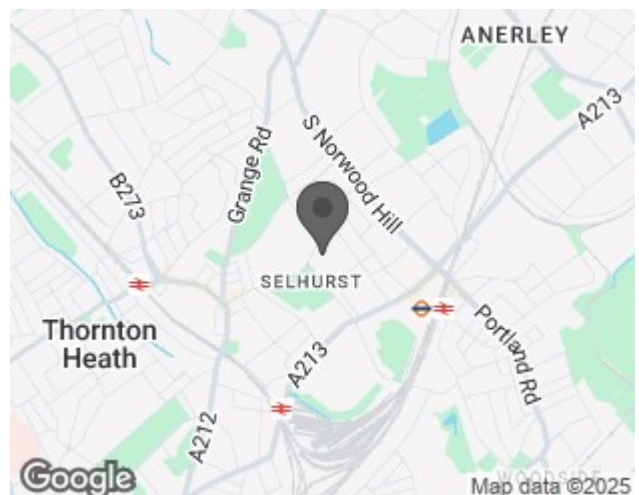


Ground Floor

EPC

Energy Efficiency Rating		
	Current	Potential
Very energy efficient - lower running costs		
(92 plus) A		
(81-91) B		
(69-80) C	72	77
(55-68) D		
(39-54) E		
(21-38) F		
(1-20) G		
Not energy efficient - higher running costs		
England & Wales		
	EU Directive 2002/91/EC	

Map



Details

Type: Flat - Purpose Built Beds: 1 Bathrooms: 1 Receptions: 1 Tenure:

Nestled in the charming Claret Gardens, this delightful purpose-built flat offers a perfect blend of classic character and modern convenience. Spanning an impressive 498 square feet, the property features a well-proportioned reception room that invites natural light, creating a warm and welcoming atmosphere.

Features

• ONE BEDROOM FLAT • Available Now • £1300 PER CALENDER MONTH • 11 Min walk to Norwood Junction Station • GATED PARKING • Sought after location • Separate living room and kitchen • Ideal for single occupancy or a couple • CLOSE TO GREEN SPACES

EPC C

COUNCIL TAX BAND B

Asking Price £1,300

The flat which is situated on the ground floor, comprises one bedroom, ideal for relaxation, a neatly appointed bathroom, kitchen and lounge, all that cater to all your needs.

Offered in good condition, spanning approximately 498 the flat also benefits from gated parking.

Claret Gardens is a sought-after location in London, known for its tranquil surroundings and easy access to local amenities. Residents can enjoy nearby parks, shops, and excellent transport links, making it an ideal choice for both professionals and couples seeking a vibrant urban lifestyle.

TRANSPORT

Norwood Junction train station travel times to central London stations include:

London Bridge in approximately 12 minutes

Blackfriars in approximately 18 minutes

RECREATION

Grangewood Park and South Norwood recreation ground are within easy walking distance