

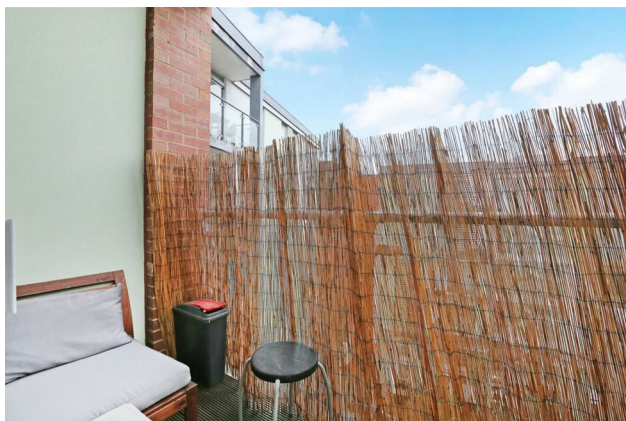
HUNTERS®

HERE TO GET *you* THERE

Co Operative House, London, SE15 4UR

Asking Price £350,000

Property Images



HUNTERS®

HERE TO GET *you* THERE

Property Images



HUNTERS[®]

HERE TO GET *you* THERE

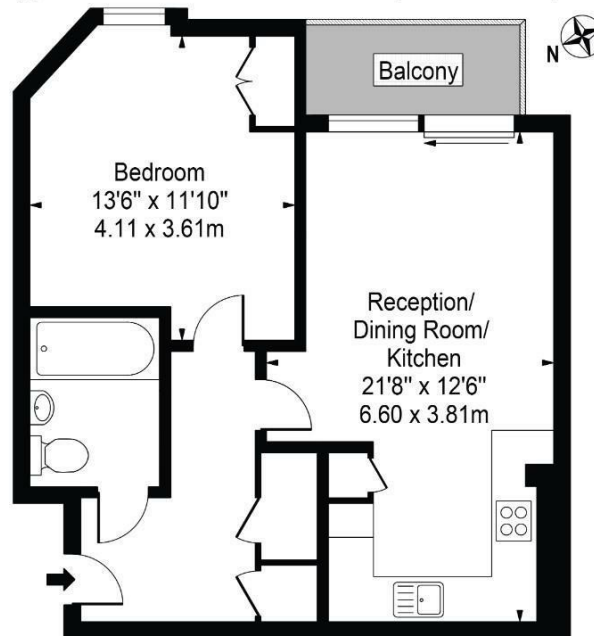
Property Images



HUNTERS®

HERE TO GET *you* THERE

Co Operative House,
Rye Lane, SE15 4UR
Approx. Gross Internal Area 535 Sq Ft - 49.70 Sq M



Fifth Floor

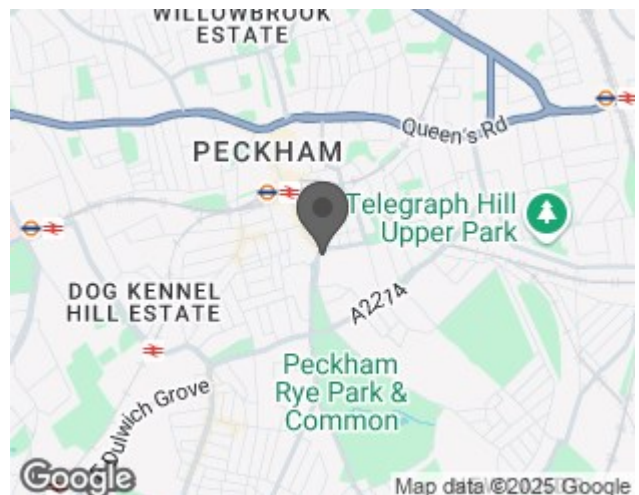
For Illustration Purposes Only - Not To Scale - Floor Plan by interDesign Photography
www.interdesignphotography.com

This floor plan should be used as general outline for guidance only.
All measurements are approximate and for illustration purposes only as defined by the RICS Code of Measuring Practice ©2016.

EPC

Energy Efficiency Rating		
	Current	Potential
Very energy efficient - lower running costs		
(92 plus) A		
(81-91) B	81	81
(69-80) C		
(55-68) D		
(39-54) E		
(21-38) F		
(1-20) G		
Not energy efficient - higher running costs		
England & Wales	EU Directive 2002/91/EC	

Map



Details

Type: Flat - Purpose Built Beds: 1 Bathrooms: 1 Receptions: 1
Tenure: Leasehold

Set in this modern development is this fifth- floor one bedroom apartment in this modern development set in the heart of Peckham. Spanning approximately 535 sqft is this beautiful apartment benefitting from one double bedroom, a substantial open plan living room/kitchen, a family bathroom, wide entrance corridor and a private balcony.

The development also benefits from secure entry and communal gardens including children's playground and is conveniently situated for shops, restaurants, amenities and transport.

Features

• Asking Price £350,000 • Modern Development • Popular Location • One -Bedroom Apartment • Open-Plan Living Room/Kitchen • Private Balcony • Family Bathroom • Close Proximity to Shops, Restaurants and Amenities • Close Proximity to Parks and Green Spaces • Close Proximity to Schools

EPC B

COUNCIL TAX BAND B - Southwark

Leasehold

Asking Price - £350,000

PLEASE VIEW OUR 360 DEGREE INTERACTIVE TOUR VIA THE VIRTUAL TOUR LINK. You can also see our full walk through the link to YouTube or a short video walk through via the link to TikTok.

Contact Hunters to arrange for FREE mortgage advice and obtain a MULTI LENDER agreement in principle.

Contact Hunters to arrange your free conveyancing quotation. Find out about potential costs including stamp duty, local authority and other searches from our partner conveyancing firm who have been voted in the top 1% of firms in the country.

Set in this modern development is this fifth- floor one bedroom apartment in this modern development set in the heart of Peckham. Spanning approximately 535 sqft is this beautiful apartment benefitting from one double bedroom, a substantial open plan living room/kitchen, a family bathroom, wide entrance corridor and a private balcony.

The development also benefits from secure entry and communal gardens including children's playground and is conveniently situated for shops, restaurants, amenities and transport.

Peckham Rye Station is just a 7 minute walk and offers direct access into Central London.

Travel time to London Bridge is just 10 minutes.

There are also numerous bus services on your doorstep giving access to London and surrounding areas.

Rye Lane benefits from a huge amount of Shops, Bars, Restaurants and Local Amenities which offer modern and vibrant living for residents.

Local Parks and Green Spaces include Peckham Rye Park and Common, The Sexby Gardens and also the Horniman Gardens are within easy reach.

The nearby schools include Rye Oak Primary School, Harris Boys Academy and John Donne Primary School.

Verified Material Information

Council tax band: B

Council tax annual charge: £1394.54 a year (£116.21 a month)

Tenure: Leasehold

Service charge: £3168.12 pa

Property type: Flat

Property construction: Standard form

Number and types of room: 1 bedroom, 1 reception

Electricity supply: Mains electricity

Solar Panels: No



10A Dartmouth Road, Forest Hill, SE23 3XU
Tel: 020 3002 4089 Email: foresthill@hunters.com <https://www.hunters.com>



Other electricity sources: No

Water supply: Mains water supply

Sewerage: Mains

Heating: Central heating

Heating features: None

Broadband: FTTP (Fibre to the Premises)

Mobile coverage: O2 - Good, Vodafone - Good, Three - Great, EE - Good