

# HUNTERS®

HERE TO GET *you* THERE

**Flat 1 1 Manor Mount, London, SE23 3PY**

**Asking Price £400,000**

**Property Images**



Get buyer ready through Hunters

FREE conveyancing quotation via Hunters for a "no sale, no solicitor fee"  
conveyancing service

FREE mortgage consultation via Hunters - just call us to book in

# HUNTERS®

HERE TO GET *you* THERE

# HUNTERS<sup>®</sup>

HERE TO GET *you* THERE

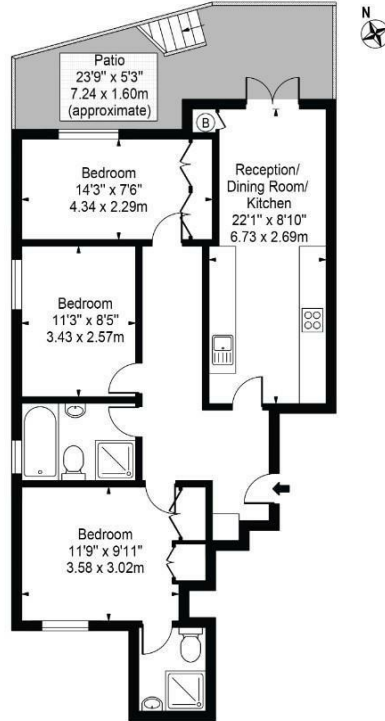
Property Images

# HUNTERS<sup>®</sup>

HERE TO GET *you* THERE

Property Images

Manor Mount, SE23  
 Approx. Gross Internal Area 767 Sq Ft - 71.26 Sq M



Lower Ground Floor

For Illustration Purposes Only - Not To Scale - Floor Plan by interDesign Photography

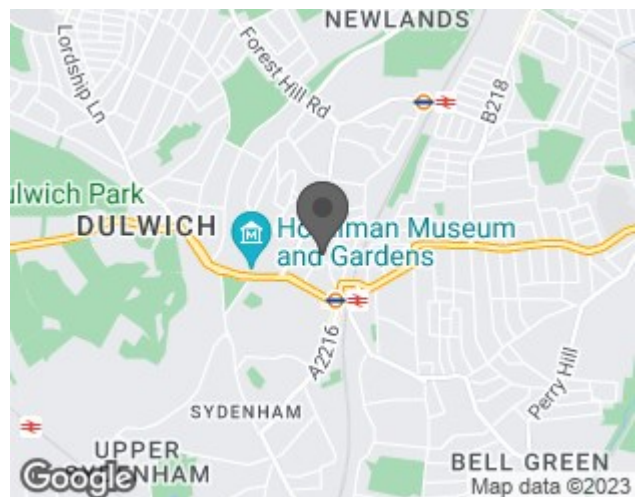
[www.interdesignphotography.com](http://www.interdesignphotography.com)

This floor plan should be used as general outline for guidance only. All measurements are approximate and for illustration purposes only as defined by the RICS Code of Measuring Practice ©2016.

## EPC

Energy Efficiency Rating		Current	Potential
<i>Very energy efficient - lower running costs</i>			
(92 plus) <b>A</b>			
(81-91) <b>B</b>			
(69-80) <b>C</b>			
(55-68) <b>D</b>			
(39-54) <b>E</b>			
(21-38) <b>F</b>			
(1-20) <b>G</b>			
<i>Not energy efficient - higher running costs</i>			
<b>England &amp; Wales</b>	EU Directive 2002/91/EC		

## Map



## Details

Type: Flat Beds: 3 Bathrooms: 2 Receptions: 1 Tenure: Leasehold

## Summary

Ground floor garden flat offering over 760 sq ft of living space, private garden, parking, long leasehold (over 115 years), positioned in a grand period building on a premier road in Forest Hill SE23 approximately 0.2 mile from the station and town

## Features

- 2 bedroom 2 bathrooms • Garden flat • Long lease • Over 760 sq ft of space • Parking • Premier Road in Forest Hill