

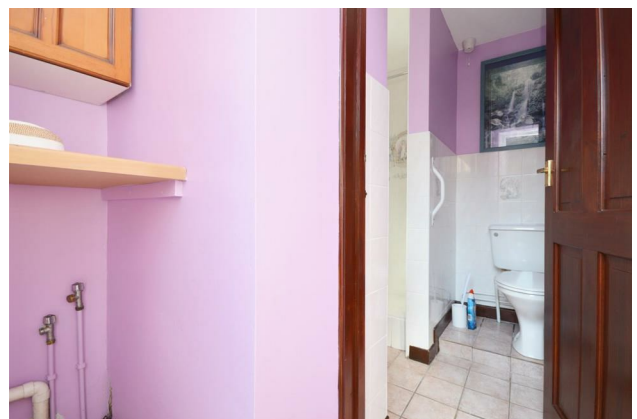
HUNTERS®

HERE TO GET *you* THERE

7 Eastridge Drive, Bristol, BS13 8HQ

£335,000

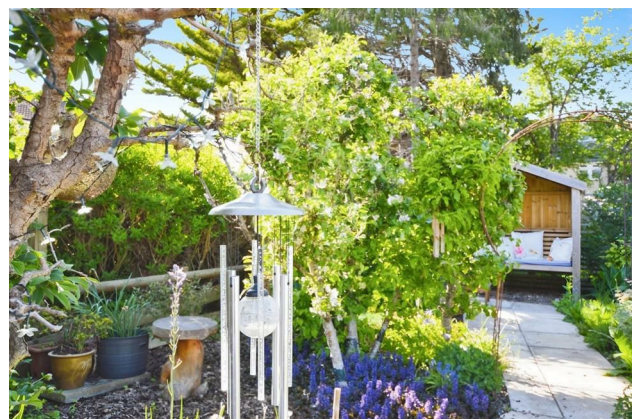
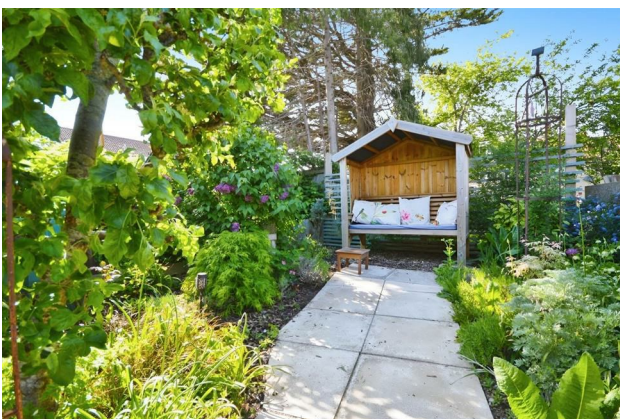
Property Images



HUNTERS®

HERE TO GET *you* THERE

Property Images



HUNTERS[®]

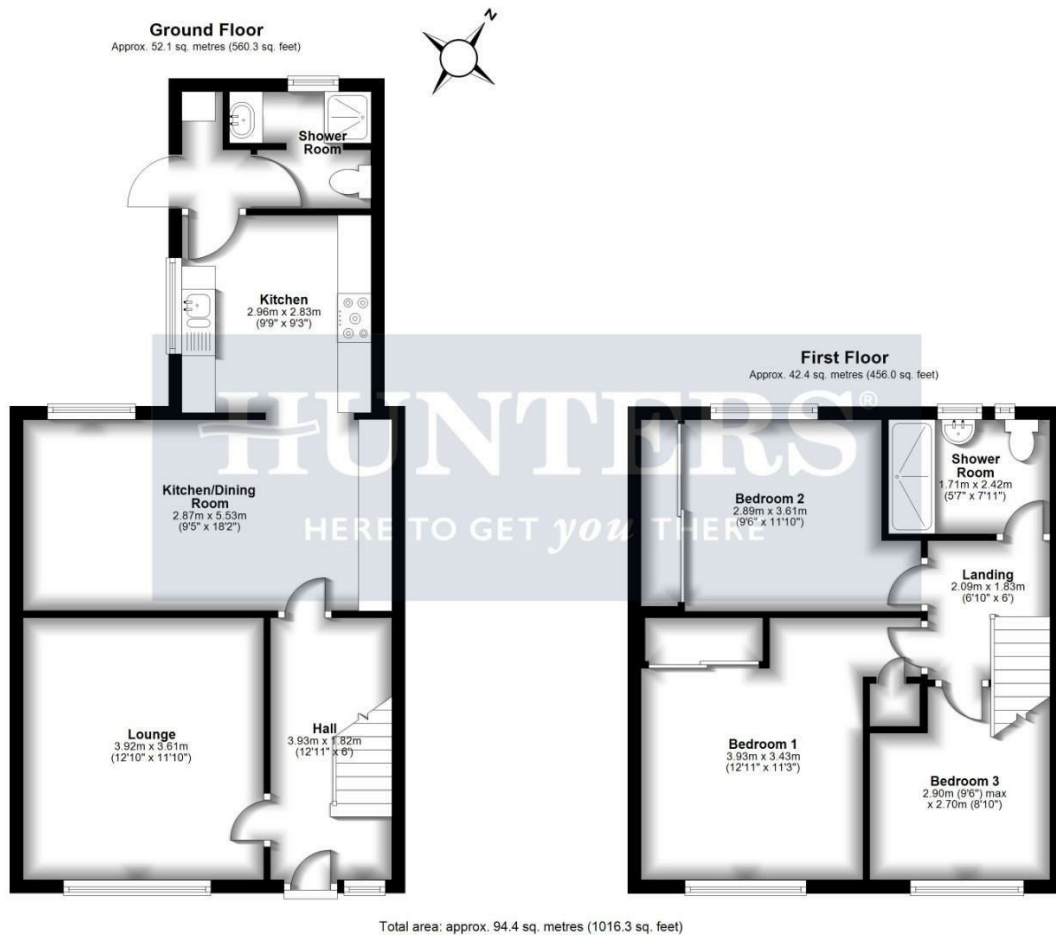
HERE TO GET *you* THERE

Property Images

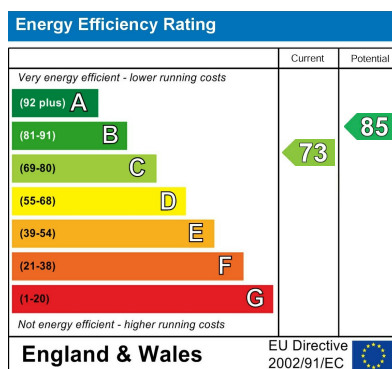


HUNTERS®

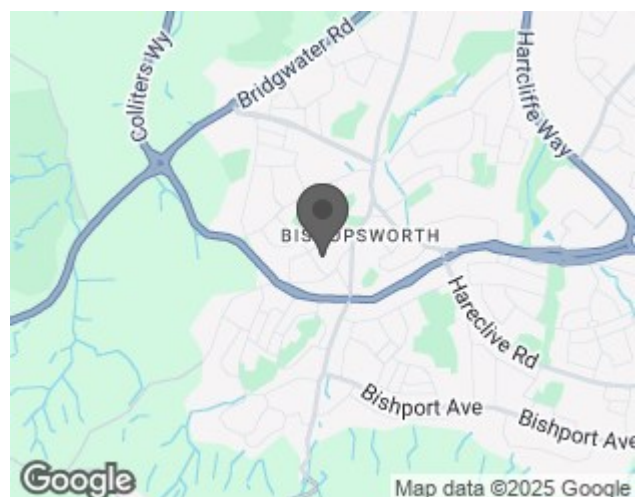
HERE TO GET *you* THERE



EPC



Map



Details

Type: House - Mid Terrace Beds: 3 Bathrooms: 2 Receptions: 2 Tenure: Freehold

Summary

Introducing this fantastic extended terraced property to the market. Located in a prime area with excellent proximity to public transport links, local amenities, and reputable schools, this property is perfect for first-time buyers and families alike.

The property boasts three bedrooms. The first bedroom is a spacious double room with built-in wardrobes, while the second bedroom is also a double room with built-in wardrobes. The third bedroom is a cosy single room, ideal for a child's bedroom or office space.

Two reception rooms add a layer of flexibility to the property. The first reception room is a light and airy lounge situated towards the front of the house. The second reception room is a dining room that seamlessly opens through to the kitchen, creating a harmonious flow - perfect for family dinners or entertaining guests.

Two bathrooms enhance the convenience of this household. The first-floor bathroom is a shower room, and the ground floor offers a shower room with a separate w/c.

Externally, the property is just as impressive, offering a mature garden ideal for summer barbecues and a driveway to the front for secure off-street parking.

The property is available with no onward chain, making the transition as smooth as possible. A viewing is highly recommended to fully appreciate the potential of this home!

Features

- Mid Terraced Home • Extended • Lounge • Dining Room • Kitchen • Two Shower Rooms • Off Street Parking • Enclosed Rear Garden • No Onward Chain!