

HUNTERS®

HERE TO GET *you* THERE

33 Maidenhead Road, Bristol, BS13 0PS

£240,000

Property Images



HUNTERS[®]

HERE TO GET *you* THERE

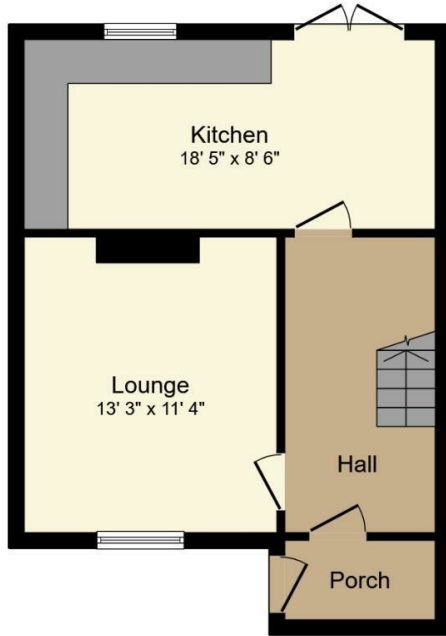
Property Images



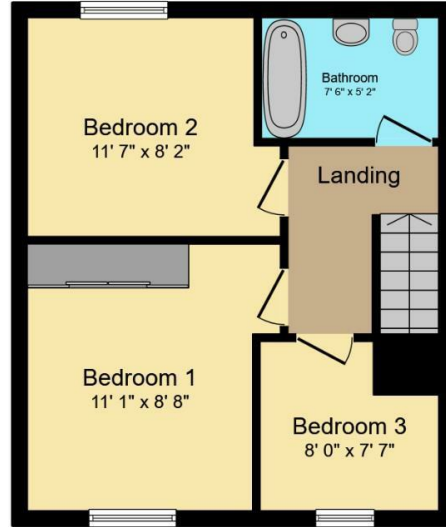
HUNTERS®

HERE TO GET *you* THERE

Floorplan



Ground Floor
Floor area 433 sq.ft.



First Floor
Floor area 407 sq.ft.

TOTAL: 840 sq.ft.

This floor plan is for illustrative purposes only. It is not drawn to scale. Any measurements, floor areas (including any total floor area), openings and orientations are approximate. No details are guaranteed, they cannot be relied upon for any purpose and do not form any part of any agreement. No liability is taken for any error, omission or misstatement. A party must rely upon its own inspection(s). Powered by www.Propertybox.io

EPC

Energy Efficiency Rating		Current	Potential
<i>Very energy efficient - lower running costs</i>			
(92 plus) A			82
(81-91) B			
(69-80) C			
(55-68) D		64	
(39-54) E			
(21-38) F			
(1-20) G			
<i>Not energy efficient - higher running costs</i>			
England & Wales		EU Directive 2002/91/EC	

Map



Details

Type: House - End Terrace Beds: 3 Bathrooms: 1 Receptions: 1 Tenure: Freehold

Summary

Introducing this three-bedroom end-of-terrace home in South Bristol, now available for sale with no onward chain.

The ground floor features an entrance hall, a lounge, and a kitchen-diner that opens onto a rear enclosed garden. Upstairs, you'll find three bedrooms and a bathroom. The front of the property offers ample off-street parking for multiple vehicles.

Contact us today to arrange a viewing.

Features

• Three Bedrooms • No Chain • Off-Street Parking • Enclosed Rear Garden • End of Terrace • Close to Amenities