

HUNTERS[®]

HERE TO GET *you* THERE



Highridge Road

Bishopsworth, Bristol, BS13 8HJ

£1,300 Per Month

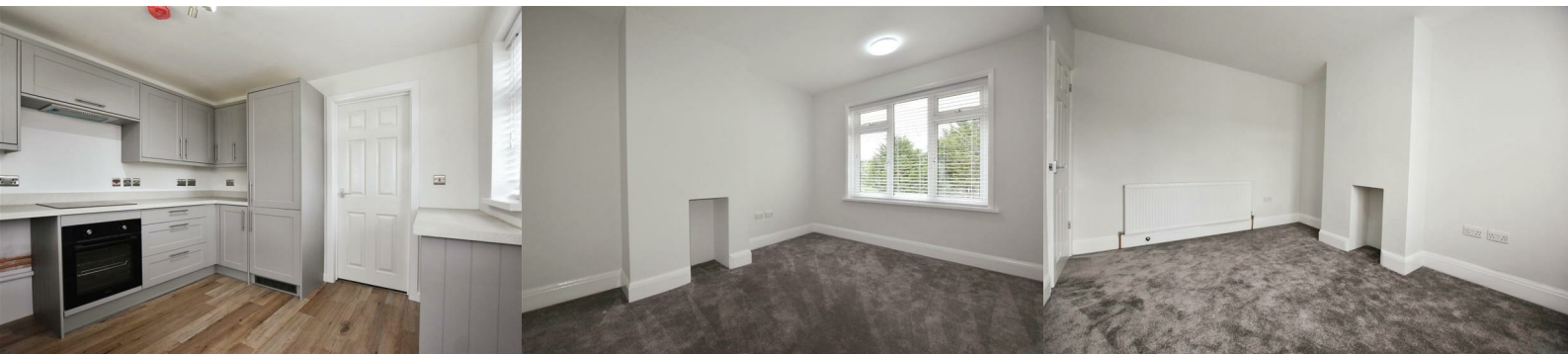


Welcome to this charming property located on Highridge Road in the lovely area of Bishopsworth, Bristol. This delightful house boasts a newly renovated interior, perfect for those looking for a fresh start in a beautiful home.

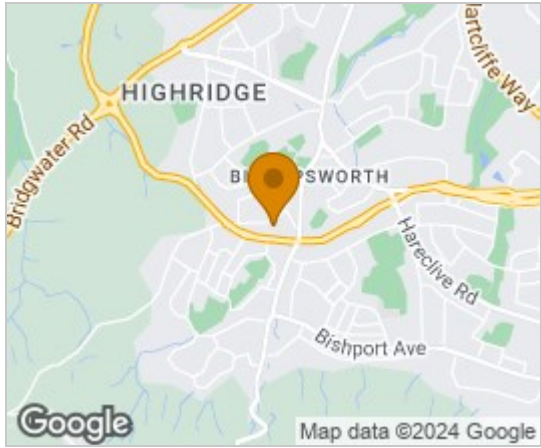
As you step inside, you are greeted by a cosy reception room, ideal for relaxing with family or entertaining guests. The property features one large bedroom and one standard bedroom, offering comfortable living spaces for a small family or professionals looking for extra room.

With two parking spaces available, parking will never be an issue, providing ease and accessibility for those with vehicles.

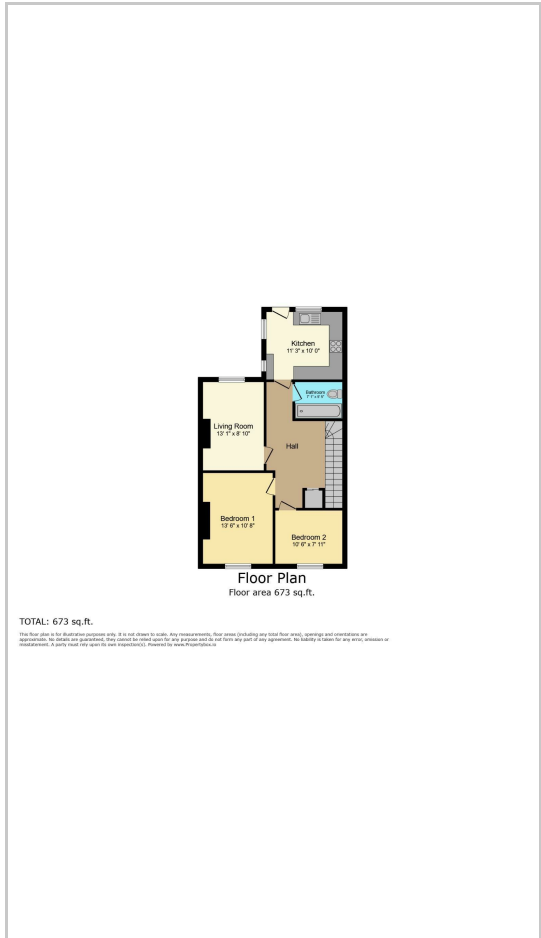
Located in the heart of Bishopsworth, this property offers a peaceful retreat from the hustle and bustle of the city, while still being conveniently close to local amenities and transport links.



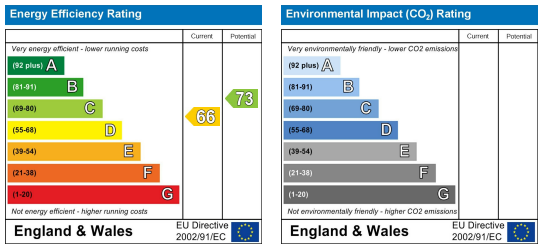
Area Map



Floor Plans



Energy Efficiency Graph



These particulars are intended to give a fair and reliable description of the property but no responsibility for any inaccuracy or error can be accepted and do not constitute an offer or contract. We have not tested any services or appliances (including central heating if fitted) referred to in these particulars and the purchasers are advised to satisfy themselves as to the working order and condition. If a property is unoccupied at any time there may be reconnection charges for any switched off/disconnected or drained services or appliances - All measurements are approximate. **THINKING OF SELLING?** If you are thinking of selling your home or just curious to discover the value of your property, Hunters would be pleased to provide free, no obligation sales and marketing advice. Even if your home is outside the area covered by our local offices we can arrange a Market Appraisal through our national network of Hunters estate agents.