



23 Redhouse Place

Blackburn, Bathgate, EH47 7QA



Property Summary

Set within an established residential development in Blackburn, this sunny, generous terraced house comprises two spacious bedrooms: a south-facing living room with double doors, a dining kitchen with rear garden access, and a modern wet room. It also benefits from enclosed gardens, which are south-facing to the front, and on-street parking. The property is within walking distance of excellent local amenities, including shops, green spaces, primary schools, and bus/road links, whilst being under an hour's drive from central Edinburgh.

Extras: All fitted floor and window coverings, light fittings and kitchen appliances are included in the sale

Property Features

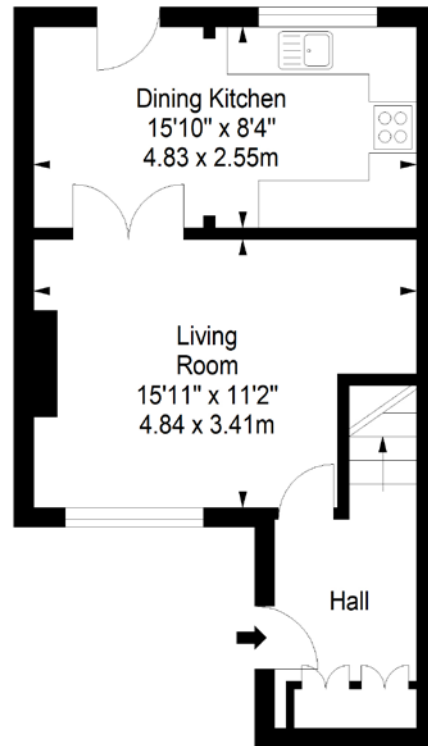
- Mid-terrace house in Blackburn
- Established residential development
- Modern interiors throughout
- Entrance hall with storage
- Sunny living room with French doors
- Dining kitchen with rear garden access
- South-facing main bedroom with storage
- Versatile second bedroom
- Modern wet room
- Minimalist gardens to the front and rear
- On-street parking
- Gas central heating and double glazing
- EPC Rating - D



Floorplan

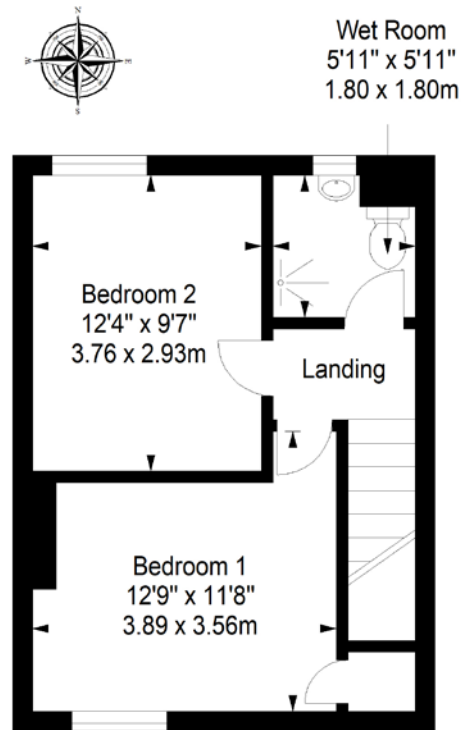
Ground Floor

Approx. 34.6 sq. metres (372.4 sq. feet)



First Floor

Approx. 32.7 sq. metres (352.0 sq. feet)



Total area: approx. 67.3 sq. metres (724.4 sq. feet)

All Enquiries to our Property Department:

Afton Henderson | ah@sneddons-ssc.co.uk | 01506 815832 | www.sneddonmorrison.co.uk
14 East Main Street, Whitburn, West Lothian EH47 0RB

IMPORTANT: The selling agents for themselves and for the sellers of the above property give notice that these particulars are for guidance only and their accuracy is not guaranteed. These particulars will not form part of any contract and interested parties should satisfy themselves in all aspects prior to submitting offers. The sellers do not bind themselves to accept the highest offer. S1106