



62 Goldpark Place

Livingston, West Lothian, EH54 6LW



Property Summary

Welcome to a beautiful detached bungalow that occupies a generous corner plot in Livingston, providing lots of space both inside and out. The home enjoys attractively decorated interiors and it is finished with quality fixtures and fittings, including a large dining kitchen and two bathrooms. It has excellent storage as well, and the versatility to suit your needs, with two double bedrooms and a third room which can be used as another bedroom or a study or dining room. Finally, it has generous private parking and a family-friendly rear garden that is fully enclosed and with a suntrap, southwest-facing aspect.

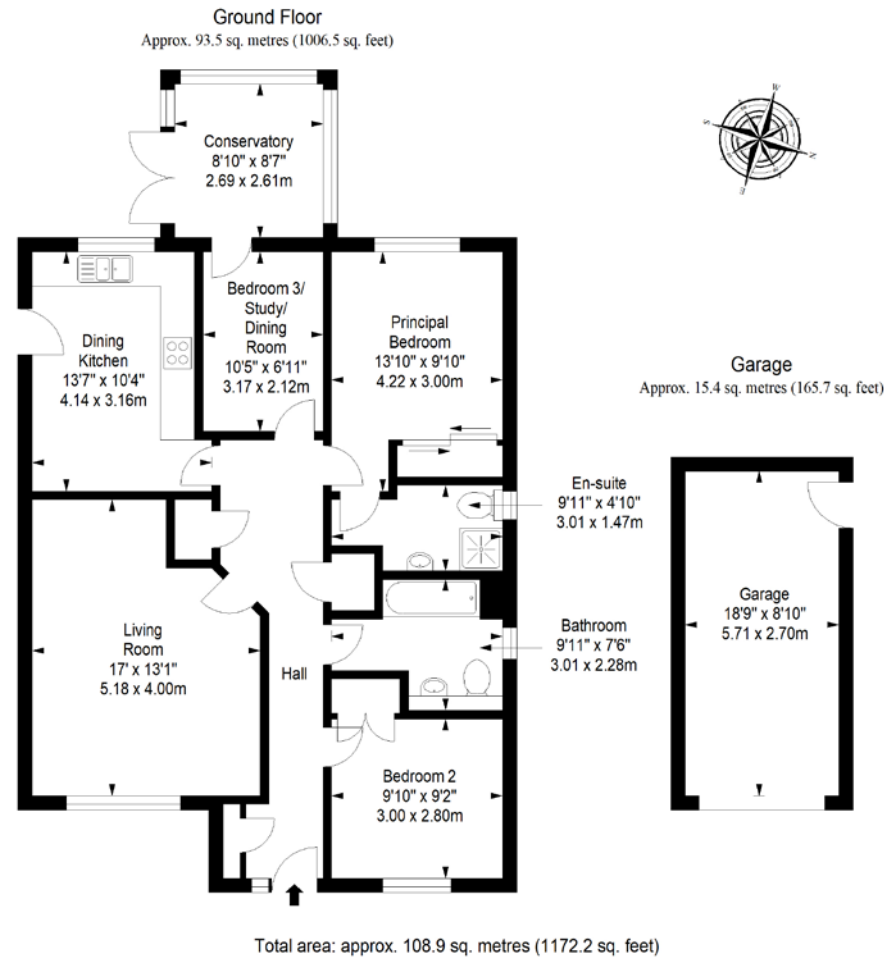
Extras: all fitted floor and window coverings, light fittings, and integrated kitchen appliances to be included in the sale.

Property Features

- Detached bungalow with corner plot
- Situated in popular Livingston
- Well-presented interiors throughout
- Entrance hall with generous storage
- Living room that is bright and spacious
- Modern, well-appointed dining kitchen
- Sunny conservatory with lovely garden views
- Two double bedrooms with built-in wardrobes
- Versatile third bedroom/study/dining room
- Bright three-piece en-suite shower room
- Quality three-piece family bathroom
- Well-kept gardens to the front, sides, and rear
- Private driveway and single garage
- Gas central heating and double glazing
- EPC Rating - C



Floorplan



All Enquiries to our Property Department:

Afton Henderson | ah@sneddons-ssc.co.uk | 01506 815832 | www.sneddonmorrison.co.uk
14 East Main Street, Whitburn, West Lothian EH47 0RB

IMPORTANT: The selling agents for themselves and for the sellers of the above property give notice that these particulars are for guidance only and their accuracy is not guaranteed. These particulars will not form part of any contract and interested parties should satisfy themselves in all aspects prior to submitting offers. The sellers do not bind themselves to accept the highest offer. S1106