

PEMBURY ROAD, TOTTENHAM  
£1,595 Per Month  
1 Bed Apartment - Conversion



Features:

- Available September
- One Bedroom Apartment
- Victorian Townhouse
- Unfurnished
- Neutral Decor Throughout
- Built In Kitchen Appliances
- Secure Bike Hangers on the Street Outside
- Set between White Hart Lane and Bruce Grove station

A range of immaculately finished, newly refurbished one bedroom apartments in this substantial Victorian townhouse. Sat handy between White Hart Lane and Bruce Grove station, you also have a wide choice of open green spaces nearby.

With secure bike hangers on the street outside, cyclists can speed to the vast, 500 acre wilderness of Walthamstow Wetlands in just ten minutes. Perfect anytime you want to blow away the cobwebs.

REQUEST A VIEWING  
0203 397 9797

E11, E7, E12 & E15  
hello11@stowbrothers.com  
0203 397 2222

E4 & N17  
hello4@stowbrothers.com  
0203 369 6444

E17 & E10  
hello17@stowbrothers.com  
0203 397 9797

E18 & IG8  
hello18@stowbrothers.com  
0203 369 1818

E8, E9, E5, N16, E3 & E2  
hellohackney@stowbrothers.com  
0208 520 3077

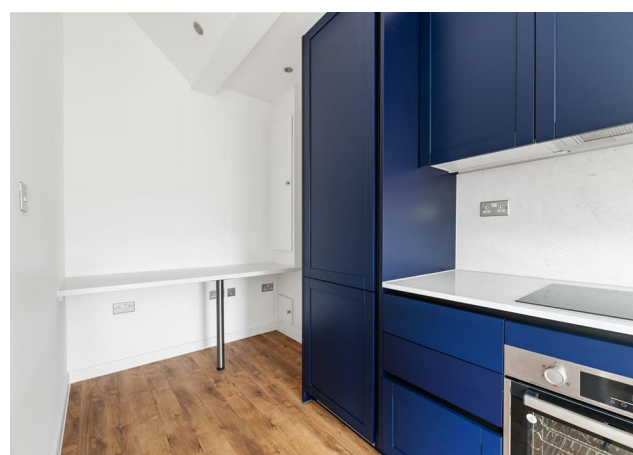
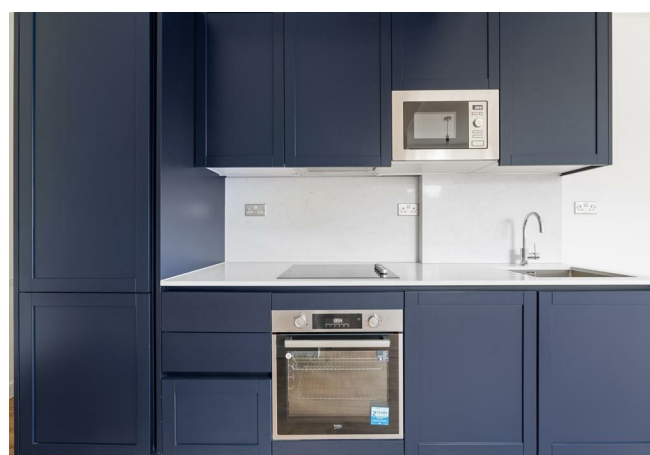
New Homes  
newhomes@stowbrothers.com  
0203 325 7227

Investment & Development  
id@stowbrothers.com  
0208 520 6220

Property Maintenance  
propertymanagement@stowbrothers.com  
0203 325 7228

STOWBROTHERS.COM  
@STOWBROTHERS





## IF YOU LIVED HERE...

You'll be enjoying all the benefits of the top to toe refurbishment across this range of covetable one beds. Bedrooms are skylit doubles, with pristine white walls making the most of the natural light, and freshly laid soft carpet underfoot. Windows frame leafy views and bathrooms are decked out with oversized, walk-in rainfall shower cubicles.

Your substantial kitchen/diners are all generously proportioned, each coming in at around 250 square feet for a wealth of sociable and culinary space. Handsome

royal blue cabinets run down one flank, home to a range of brand new integrated appliances, stainless steel ovens and microwaves. Chunky white counters and chrome fittings complete the aesthetic.

Outside and, as noted, Bruce Grove station is less than half a mile away, eight minutes' walk or four by bike. From here the Overground will get you directly to Liverpool Street in just twenty two minutes, putting the City just half an hour away, door-to-door. Alternatively, ride for one stop and three minutes for Seven Sisters and the Victoria line. If you're staying local then legendary White Hart Lane itself is just a five minute stroll.



## WHAT ELSE?

- The playgrounds, tennis courts and open green spaces of Bruce Castle Park are just three minutes away on foot, perfect for morning jogs and evening strolls.
- Ideal for professionals, all apartments are available now.
- All your day to day amenities, from cafes to supermarkets, are just a couple of minutes around the corner on the High Road.

REQUEST A VIEWING  
0203 397 9797

FOLLOW US ➡ @STOWBROTHERS  
STOWBROTHERS.COM