



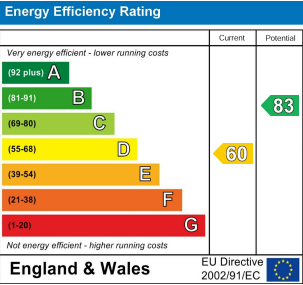
WALPOLE ROAD, LONDON
£3,250 Per Calendar Month
4 Bed House



Features:

- Available October
- Four Bedrooms
- Two Bathrooms
- Victorian Terraced House
- Period Features
- Contemporary Interior
- Quiet Residential Street
- NOT SUITABLE FOR SHARERS

This beautifully restored four-bedroom Victorian terrace, complete with a converted loft, two bathrooms, a light-filled kitchen/diner and a charming rear garden, is enviably located between Walthamstow Central, Lloyd Park, Blackhorse Road and St James Street. Here, you'll enjoy the convenience and transport links of several vibrant neighbourhoods, while Walpole Road itself remains peaceful and residential, offering the very best of both worlds.



E11, E7, E12 & E15
hello11@stowbrothers.com
0203 397 2222

E4 & N17
hello4@stowbrothers.com
0203 369 6444

E17 & E10
hello17@stowbrothers.com
0203 397 9797

E18 & IG8
hello18@stowbrothers.com
0203 369 1818

E8, E9, E5, N16, E3 & E2
hellohackney@stowbrothers.com
0208 520 3077

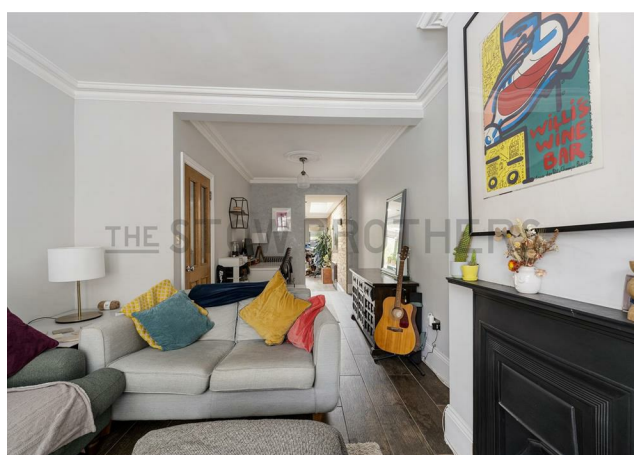
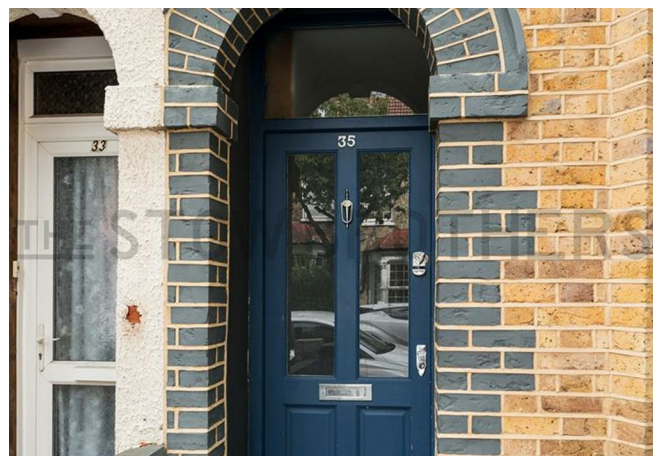
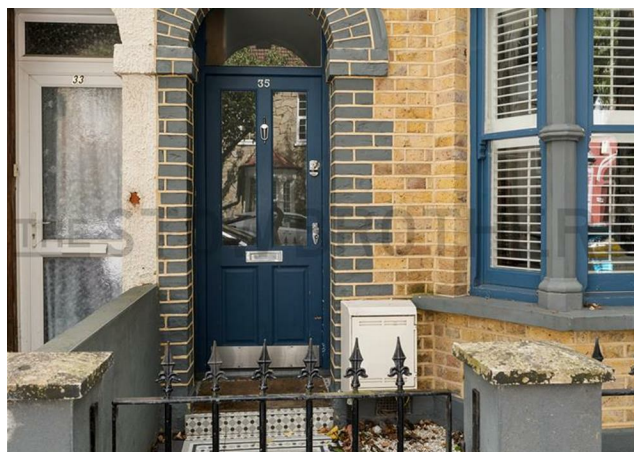
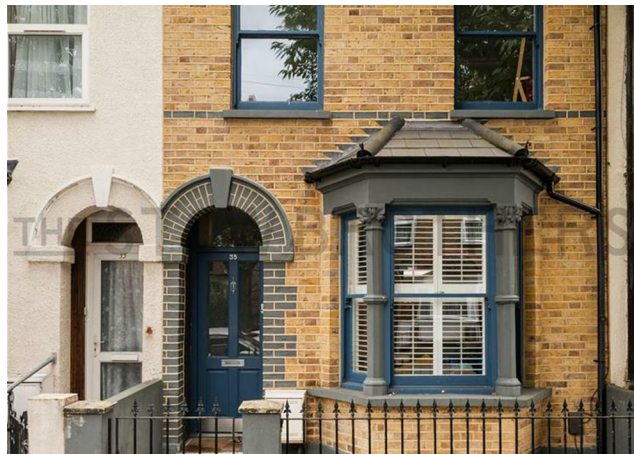
New Homes
newhomes@stowbrothers.com
0203 325 7227

Investment & Development
id@stowbrothers.com
0208 520 6220

Property Maintenance
propertymanagement@stowbrothers.com
0203 325 7228

STOWBROTHERS.COM
RSTOWBROTHERS

REQUEST A VIEWING
0203 397 9797



REQUEST A VIEWING
0203 397 9797

IF YOU LIVED HERE...

Thanks to its immaculate condition, you can welcome friends and family into your beautiful home straight away. You'll be eager to show it off, especially the striking Victorian frontage and period details throughout, from the ornate coving to the charming finishes that give it character.

The ground floor has been cleverly designed to provide a wonderfully open-plan experience, with natural light flowing through the double reception and spacious kitchen-diner. Distinct living areas create versatility, while the balance between tradition and modern convenience shines through. Classic features such as the fireplace surround, bespoke shutters and exposed brickwork are beautifully complemented by the contemporary kitchen island, smart units and brass fittings. When the weather allows, you can step outside to enjoy the thoughtfully landscaped garden, complete with a paved patio, generous lawn and handy rear storage.

Upstairs, spread across the first and second floors, are four bedrooms, each with their own unique character and special touches, including vintage-style radiators. The two bathrooms are equally impressive, but the one with bespoke shutters, a walk-in shower and a roll-top bathtub is stand-out.

Beyond your front yard, you're in a brilliant spot for exploring our beloved E17. As well as being a hub for coffee shops, bars and eateries, there's an abundance of green space; it's a 14 minute stroll from the glorious Lloyd Park, where you'll also find the William Morris Gallery, the former home of Walthamstow's most famous son.

Head even closer towards Blackhorse Road where you'll find the excellent bottle shop/bar Forest Wines (eight mins) and a genuine Banksy outside the cheerful Bonners fish and chip shop (seven mins). You're also a ten minute stroll from Europe's longest market, which runs along the High Street. Here you'll find Forest Cinema and the convenient chains in the 17&Central shopping centre.

And if you need to travel beyond E17, it couldn't be easier; Blackhorse Road station is 12 mins on foot, where you can also access the Victoria line and the Suffragette Overground. Or Walthamstow Central station is four mins further and allows quick and direct access to Liverpool Street via the Weaver Overground.



WHAT ELSE?

- Just 12 minutes from you is East of Eden, offering yoga and pilates whenever you need to do some serious stretching, while craft beer fans can get their 'exercise' on the Blackhorse Lane Beer Mile, where locations include Signature Brew, Exale and Big Penny Social - you can be at the first stop within around 17 mins.
- Just 13 minutes away, you'll find "London's best pizza" (according to the Evening Standard) at Sodo on Hatherley Mews, an area that's enjoying a fantastic regeneration thanks to the arrival of Walthamstow Soho Theatre there.
- Parents will be pleased to learn that you have numerous popular primary/secondaries nearby.

FOLLOW US ➔ @STOWBROTHERS
STOWBROTHERS.COM