

Francis Road, E10



Total Area: 61.1 m² ... 657 ft²
All measurements are approximate and for display purposes only

Entrance Hallway
Reception Room / Kitchen
15'11" x 23'5"
Bedroom
9'2" x 11'1"
Bedroom
8'8" x 11'1"
Bathroom
5'5" x 6'9"



FRANCIS ROAD, LEYTON
£1,800 Per Calendar Month
2 Bed Flat

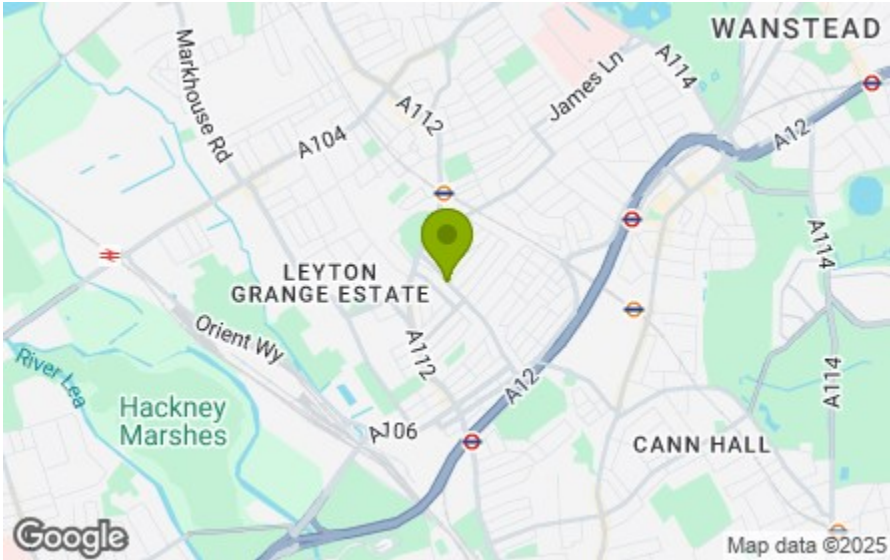


Features:

- Available Now!
- Unique Police Station Conversion
- Two Double Bedrooms
- Open Plan Living Room
- Modern Fitted Kitchen
- Contemporary Bathroom

A spacious two bedroom apartment in a unique contemporary building which was formally Leyton police station situated on the ever popular Francis Road locale.

Franics Road is a part pedestrianised area that feature many independent shops that makes Leyton such a desirable location. Leyton underground and Leyton Midland station are both within walking distance taking to Central London in a short amount of time.



Energy Efficiency Rating		
	Current	Potential
Very energy efficient - lower running costs		
(82 plus) A		
(71-81) B		
(69-80) C		
(55-68) D		
(39-54) E		
(21-38) F		
(1-20) G		
Not energy efficient - higher running costs		
England & Wales	EU Directive 2002/91/EC	

E11, E7, E12 & E15
hello11@stowbrothers.com
0203 397 2222

E4 & N17
hello4@stowbrothers.com
0203 369 6444

E17 & E10
hello17@stowbrothers.com
0203 397 9797

E18 & IG8
hello18@stowbrothers.com
0203 369 1818

E8, E9, E5, N16, E3 & E2
hellohackney@stowbrothers.com
0208 520 3077

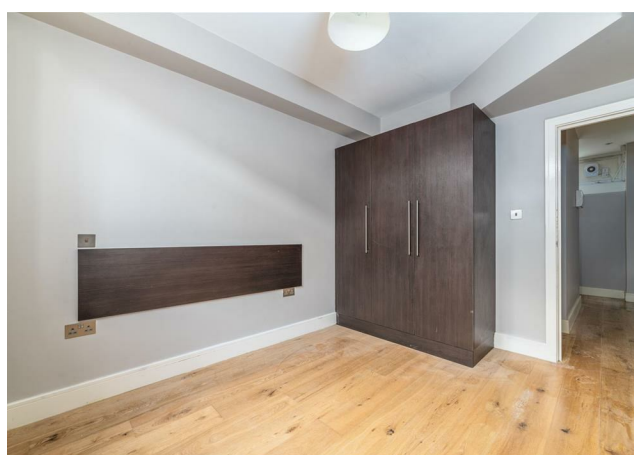
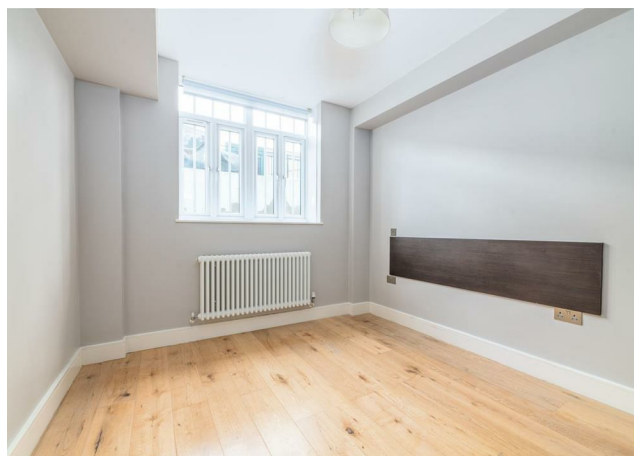
New Homes
newhomes@stowbrothers.com
0203 325 7227

Investment & Development
id@stowbrothers.com
0208 520 6220

Property Maintenance
propertymanagement@stowbrothers.com
0203 325 7228

STOWBROTHERS.COM
@STOWBROTHERS

REQUEST A VIEWING
0203 397 9797



IF YOU LIVED HERE...

You'll be enjoying modern fixtures and fittings throughout, with high end appliances in the spacious kitchen/lounge areas. Stylish engineered wood effect flooring runs underfoot, a generous suite of glossy grey fitted cabinets with a full complement of integrated appliances and matching grey countertops.

Elsewhere, bedrooms are all generous doubles, finished to the same high standard, with more of that engineered hardwood, dark wood headboards and designer radiators. The bathroom is finished in large format slate effect tiling from floor to ceiling, classic white porcelain suite and

chrome towel radiator. Finally, you have a generous sized communal court yard with spacious for locking up your bike and secure access via intercom system.

Step outside and you're already on Francis Road. With renowned Leyton names like Marmelo Kitchen, Morny Bakery and Albert & Francis just moments away, you'll never want for the finest coffee or tastiest homemade treats. Wine lovers are also well catered for, with Yardarm offering a great curated selection and regular tasting events. Finally, stroll to the end for the Northcote, a superb gastropub and much loved community staple.



WHAT ELSE?

- There's no shortage of green space, from Jack Cornwell Park to Abbots Park.
- Drivers can be on the A12 in six minutes and on the North Circular in twelve.
- Leyton underground station is fourteen minutes on foot and will whisk you directly to Stratford in just one stop via the Central Line. Liverpool Street takes just eleven minutes and another eleven minutes sees you in Tottenham Court Road.

REQUEST A VIEWING
0203 397 9797

FOLLOW US ➔ @STOWBROTHERS
STOWBROTHERS.COM