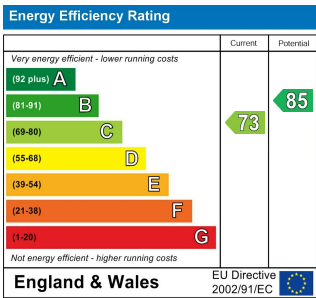
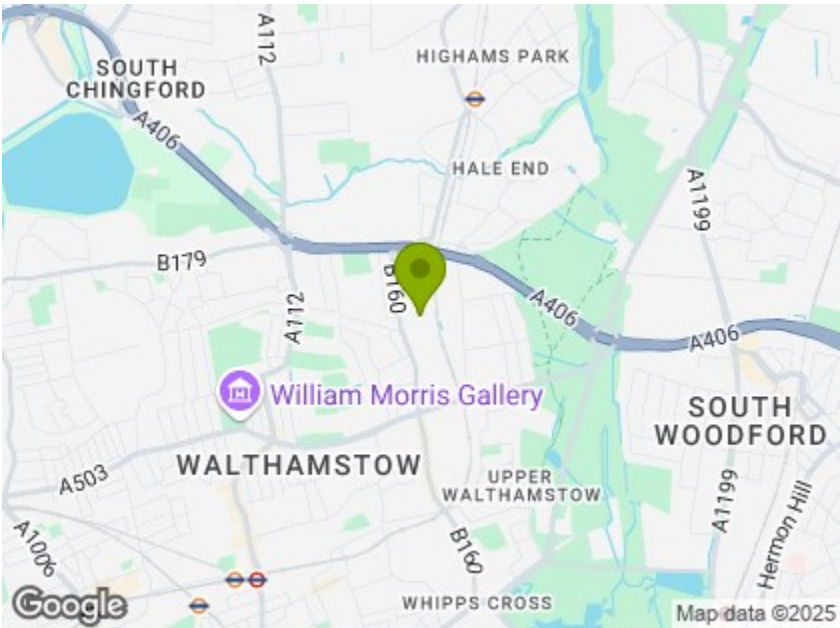


Total Area: 96.6 m² ... 1040 ft² (excluding shed / workshop)
All measurements are approximate and for display purposes only.



QUEENSWOOD AVENUE, LONDON

£2,450 Per Calendar Month
3 Bed House



Features:

- Available Date Mid August
- Freehold Terraced House
- Three Bedrooms
- Part Furnished
- Wood Effect Flooring Throughout
- Over 1000 sq.ft
- Conservatory
- Private Garden
- Proximity to Wood Street

A flawlessly finished three bedroom home, artfully arranged over two spacious storeys, one bathroom, kitchen and a captivating conservatory leading out to a luscious lengthy garden. A serene sanctuary just moments from Wood Street Station and leafy Lloyd Park.

You're perfectly positioned to explore the best of our borough, with the gorgeously green Lloyd Park, the picturesque Walthamstow Village and vibrant Hoe Street all a short stroll away on foot. For venturing further afield, Wood Street Station is just under a mile away.

E11, E7, E12 & E15
hello11@stowbrothers.com
0203 397 2222

E4 & N17
hello4@stowbrothers.com
0203 369 6444

E17 & E10
hello17@stowbrothers.com
0203 397 9797

E18 & IG8
hello18@stowbrothers.com
0203 369 1818

E8, E9, E5, N16, E3 & E2
hellohackney@stowbrothers.com
0208 520 3077

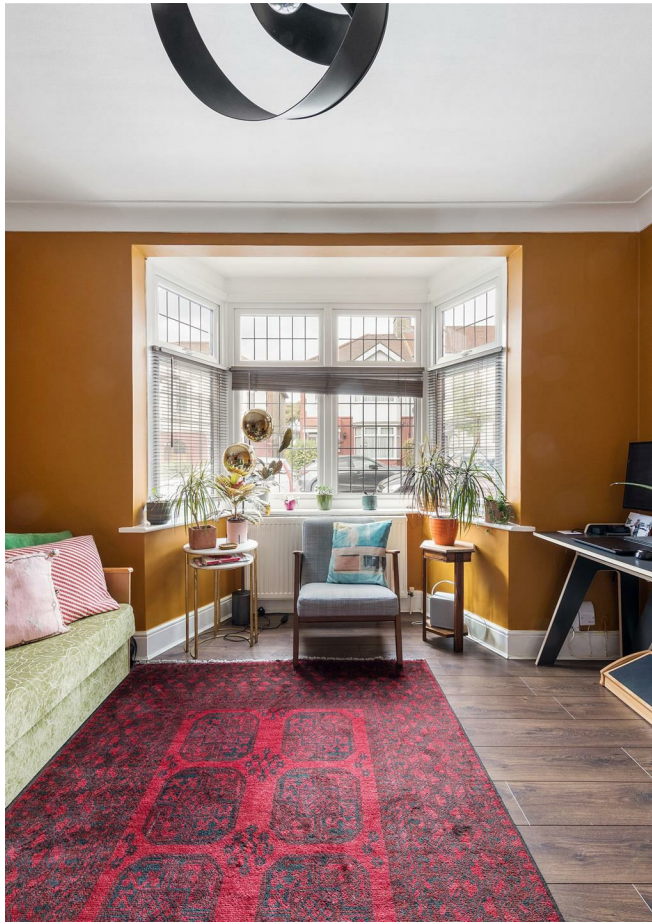
New Homes
newhomes@stowbrothers.com
0203 325 7227

Investment & Development
id@stowbrothers.com
0208 520 6220

Property Maintenance
propertymanagement@stowbrothers.com
0203 325 7228

STOWBROTHERS.COM
@STOWBROTHERS

REQUEST A VIEWING
0203 397 9797



IF YOU LIVED HERE...

You'll be instantly impressed by your stylish 1040 square foot home, handsome wood effect floors throughout your large living room, housing a fantastic original feature fireplace and a beautiful bay window, flooding the fashionable room with light.

The gorgeous Design & Decor continues in your kitchen/diner, a stretch of capacious cabinets topped with wonderful wooden worksurfaces home to a dreamy Dublin sink and luxurious letterbox tiling. Your dining area is large enough for a sociable dining table, flooded with light, thanks to your chic conservatory. On a sunny day you can throw open the doors and dine alfresco on your lovingly landscaped decking, overlooking the verdant lawn and the flourishing foliage.

Your sizeable bedrooms feature high ceilings, stylish Design & Decor and luxuriously large windows. The master bedroom presents a beautiful bay window. Moving on to your blissful bathroom, a tub with overhead shower sits

against a backdrop of stylish large format white tiling.

You're in the perfect position not only to discover the landmark surroundings of Lloyd Park and the William Morris Gallery, but just half a mile on foot away is Wood Street Indoor Market. Nestled in a gorgeous Georgian building this Aladdin's Cave features a haven of independent vintage boutiques, rare collectables and the magical Moroccan Corner. Liverpool Street and the heart of the City is only twenty minutes from nearby Wood Street Station.

WHAT ELSE?

- Parents will be pleased that there are six Ofsted rated 'Outstanding' schools in a mile radius.
- The stylish Duke gastropub is half a mile away. You must try their legendary Sunday roast.
- Walthamstow Central Tube is just a quick jaunt on the 212 bus and will connect you with the speedy Victoria Line, whisking you to the West End in just twenty minutes.



A WORD FROM THE EXPERT...

"I have worked in Walthamstow for over 10 years, and I still enjoy the buzz in the area. From the scene in Walthamstow Central which offers Collab, Gokuyuzu and the Empire cinema. Take a short stroll to the famous William Morris gallery which is located on the popular Lloyd Park surrounded by beautiful green scenery. Walthamstow Village has been a popular trend for me over the years with its bubbly night life and quirky pubs. My personal favourite is The Village Pub.

There are four trains stations in Walthamstow. Walthamstow Central, Wood Street, Blackhorse Road and Walthamstow Queens Road. I have commuted to and from Central London from Walthamstow Train Station which takes less than 20 minutes so I can see why Walthamstow has the nickname 'awesomestow'".

JON VASSALLO
ASSISTANT LETTINGS MANAGER

REQUEST A VIEWING
0203 397 9797

FOLLOW US ➡ @STOWBROTHERS
STOWBROTHERS.COM



REQUEST A VIEWING
0203 397 9797



FOLLOW US ➡ @STOWBROTHERS
STOWBROTHERS.COM



Reception
14'0" x 12'4"

Bedroom 1
14'0" x 11'5"

Bedroom 2
12'2" x 11'5"

Bedroom 3
7'3" x 6'4"

Kitchen
18'1" x 11'5"



Bathroom
7'8" x 5'7"

Conservatory
13'3" x 10'9"

Garden
41'0"

Shed/ Workshop
15'0" x 7'3"



REQUEST A VIEWING
0203 397 9797

FOLLOW US ➡ @STOWBROTHERS
STOWBROTHERS.COM