

PALAMOS ROAD, LEYTON  
£2,495 Per Month  
4 Bed House



Features:

- Victorian End terrace
- Four double bedrooms
- Large through lounge
- Wooden floors
- Huge family bathroom
- Immaculately presented
- Sorry No HMO
- Available July
- On Street Permit Parking

An immaculately stylish four bedroom Victorian terrace arranged across three impressive floors and ideal for a family. You're just a walk or short bus ride from Walthamstow Central, from where you can get into Oxford Circus or Liverpool St in just 20 minutes. The newly opened Lea Bridge road station is also moments away and not to mention the array of buses on offer making this property distinctly accessible.

**E11, E7, E12 & E15**  
hello11@stowbrothers.com  
0203 397 2222

**E4 & N17**  
hello4@stowbrothers.com  
0203 369 6444

**E17 & E10**  
hello17@stowbrothers.com  
0203 397 9797

**E18 & IG8**  
hello18@stowbrothers.com  
0203 369 1818

**E8, E9, E5, N16, E3 & E2**  
hellohackney@stowbrothers.com  
0208 520 3077

**New Homes**  
newhomes@stowbrothers.com  
0203 325 7227

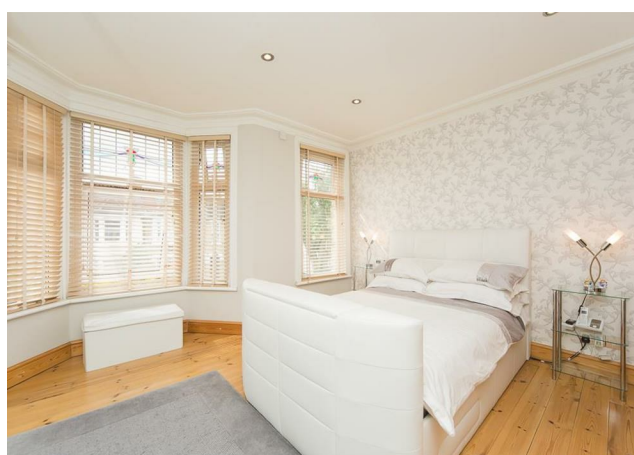
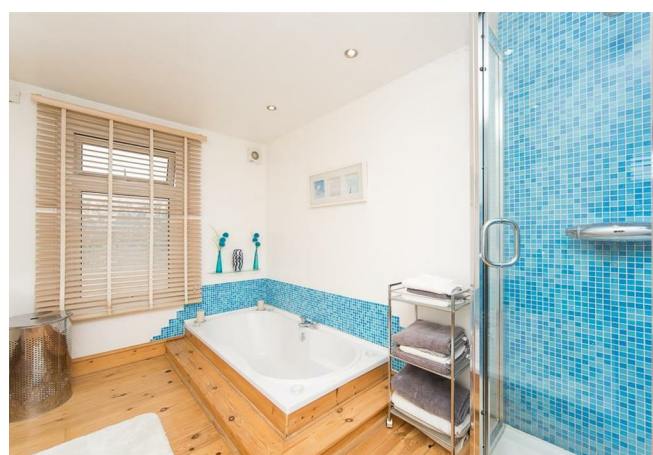
**Investment & Development**  
id@stowbrothers.com  
0208 520 6220

**Property Maintenance**  
propertymanagement@stowbrothers.com  
0203 325 7228

**STOWBROTHERS.COM**  
RSTOWBROTHERS

REQUEST A VIEWING  
0203 397 9797





## IF YOU LIVED HERE...

You'll be experiencing innovative, immaculate decor. From the original polished floor boards and designer contrast chimney breasts in the lounge, to the sunken bath and separate, mosaic tiled shower booth in the bathroom, this is a property that oozes class.

The ground floor consists of the striking 27 foot lounge with plenty of space for the largest of gatherings, or for everyone to simply split up and do their own thing. Two more double bedrooms and the unusually spacious, beautifully presented bathroom make up the first floor.

The second storey comprises a 175 foot master bedroom, lit with twin skylights and complete with an en suite shower room. There's also a second bedroom with views over the garden.

Outside, the garden is a perfectly kept mixture of decking, perfect for barbecues or just soaking up the sun, and a lush green lawn leading to a separate, self contained studio space - an ideal home office, storage or separate play area for the kids.



## WHAT ELSE?

- The fittings are impressive; floor to ceiling wardrobes in the front first floor bedroom and a full suite of appliances in the kitchen.
- There's plenty of green space nearby; Leyton Jubilee Park, Leyton Manor Park and Leyton Cricket Ground are all within walking distance.

REQUEST A VIEWING  
0203 397 9797

FOLLOW US ➡ @STOWBROTHERS  
STOWBROTHERS.COM