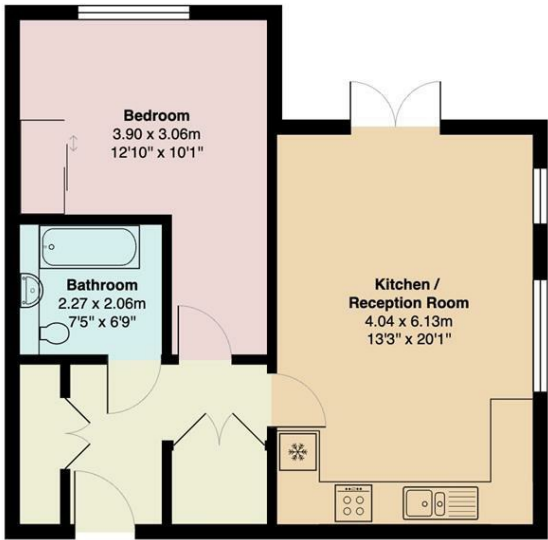


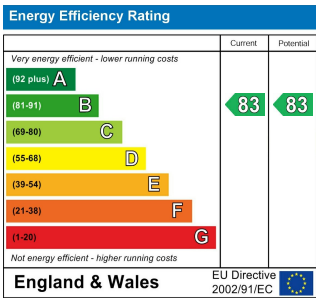
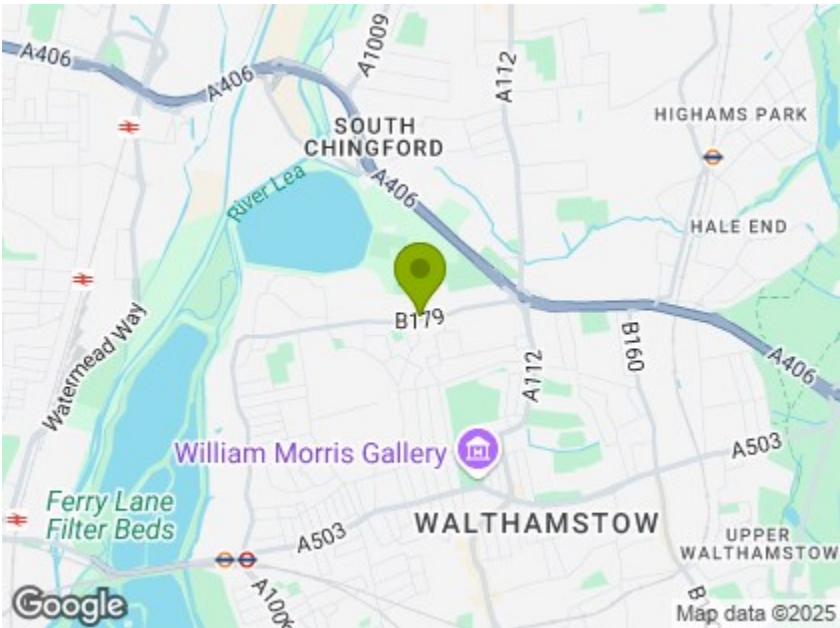
Arundel House, E17



Ground Floor

Total Area: 56.7 m² ... 610 ft²

All measurements are approximate and for display purposes only



1 THORNBURY WAY, LONDON  
£1,695 Per Calendar Month  
1 Bed House



Features:

- Available Late July
- 610 Sqft
- Unfurnished
- Private Garden
- Large Open Plan Kitchen/Living
- No Parking

A bright and tastefully decorated one bedroom apartment, with private garden and a wealth of storage, all sat on the ground floor of a contemporary development. You're just a short walk from our green gem of Lloyd Park, the varied independent shops and cafes of Hoe Street and the Walthamstow Mall. Finally, you can stop by Walthamstow Village, with it's many well know independent award winning eateries and pubs.

If you commute by car or get out of town a lot, you're ideally situated for the North Circular, less than ten minutes' drive from your front door.

REQUEST A VIEWING  
0203 397 9797

E11, E7, E12 & E15  
hello11@stowbrothers.com  
0203 397 2222

E4 & N17  
hello4@stowbrothers.com  
0203 369 6444

E17 & E10  
hello17@stowbrothers.com  
0203 397 9797

E18 & IG8  
hello18@stowbrothers.com  
0203 369 1818

E8, E9, E5, N16, E3 & E2  
hellohackney@stowbrothers.com  
0208 520 3077

New Homes  
newhomes@stowbrothers.com  
0203 325 7227

Investment & Development  
id@stowbrothers.com  
0208 520 6220

Property Maintenance  
propertymanagement@stowbrothers.com  
0203 325 7228

STOWBROTHERS.COM  
@STOWBROTHERS





REQUEST A VIEWING  
0203 397 9797

## IF YOU LIVED HERE

You'll be getting ready for a night out in your stylish tiled bathroom with feature mirrors and a boutique hotel vibe. Or you'll be looking forward to a weekend relaxing in your almost-270 square foot living area, relishing the stylish ash-finished cabinets and slate effect tiled floor in the kitchen, which gives way to natural wood engineered floors for the lounge area of the room. From here step out into your private garden – it's the perfect spot for a morning coffee or a glass of wine in the evening after exploring your new

locale. Elsewhere, the modern decor continues with earthy green and white tones in your generous double bedroom. There's fluffy cream carpet underfoot and storage space galore if you're not keen on clutter. The William Morris Gallery in nearby Lloyd Park hosts a permanent collection of the legendary Waltham Forest-born designer's works, as well as regular contemporary art exhibitions. If you wander down there, you won't be stuck for tasty treats as the in-house cafe is run by the team behind Wanstead's popular The Larder and the park hosts a regular farmers market on Saturdays.



## WHAT ELSE?

- You're a short walk or 5 minute bus ride to Blackhorse Road Station, from there easily access the Wetlands, Tottenham Hale or take a tube to Oxford Circus.
- Craft beer fans can look forward to discovering one of the area's newest attractions the 'Walthamstow Beer Mile' of breweries and taprooms which has grown up along the edge of the nearby waterways. The Wild Card Brewery less than twenty minutes' walk from your front door is an ideal place to make a start.
- Handy nearby amenities include the thriving independent stores, restaurants and cafes of Hoe Street and the stores of Walthamstow Central, while the High Street is home to Europe's longest street market. Today Bread is a Hoe Street favourite for sourdough treats.
- You're well situated for bus routes, with regular services between Stratford and Chingford from the end of the street on the 158 as well as nearby connections to Walthamstow Central for the Victoria Line and services to London Liverpool Street.

FOLLOW US ➡ @STOWBROTHERS  
STOWBROTHERS.COM



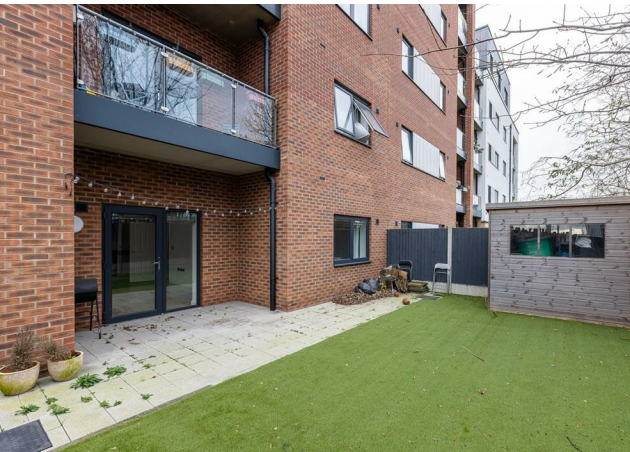


REQUEST A VIEWING  
0203 397 9797



FOLLOW US ➡ @STOWBROTHERS  
STOWBROTHERS.COM





**Kitchen/Reception**

13'3" x 20'1"

**Bedroom**

12'9" x 10'0"

**Bathroom**

7'5" x 6'9"

REQUEST A VIEWING  
0203 397 9797

FOLLOW US ➡ @STOWBROTHERS  
STOWBROTHERS.COM