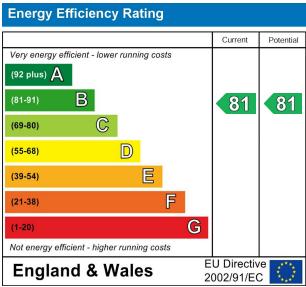


Total Area: 66.4 m² ... 715 ft² (excluding patio)  
All measurements are approximate and for display purposes only.



AINSLIE WOOD ROAD, LONDON  
£1,995 Per Calendar Month  
2 Bed Apartment



Features:

- Two Bedroom Mews Development
- New Build
- Private Gated Entrance
- Private Garden & Terrace
- Bike Storage
- Under Floor Heating (Low Energy & Highly Sustainable)
- SMEG Appliances Thoroughout
- Moments to Memorial Park

A flawless and expertly appointed two bedroom new build apartment in a contemporary development nestled between the greenery, amenities and transport links of both Chingford Mount and Highams Park. With beautiful designer flourishes and innovative technological features throughout, this is quite a find.

Cyclists will be happy to know you've secure bike storage and can be on the Chingford to Crooked Billet Quiet Route in moments to join the Blackhorse Road Station route and continue on to the Q2 Cycleway which will speed you across the marshes to Hackney and the City beyond.

REQUEST A VIEWING  
0203 397 9797

E11, E7, E12 & E15  
hello11@stowbrothers.com  
0203 397 2222

E4 & N17  
hello4@stowbrothers.com  
0203 369 6444

E17 & E10  
hello17@stowbrothers.com  
0203 397 9797

E18 & IG8  
hello18@stowbrothers.com  
0203 369 1818

E8, E9, E5, N16, E3 & E2  
hellohackney@stowbrothers.com  
0208 520 3077

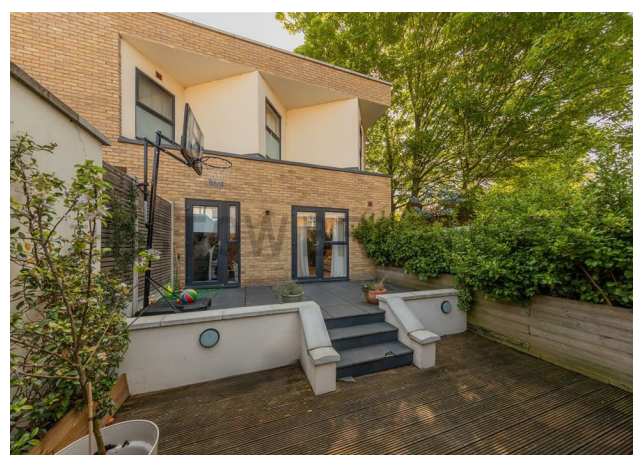
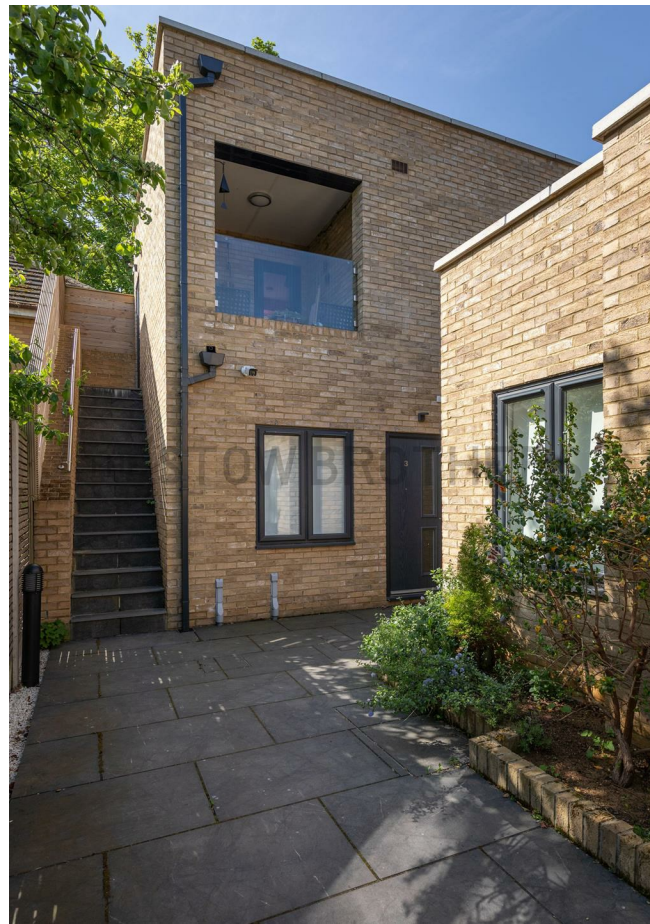
New Homes  
newhomes@stowbrothers.com  
0203 325 7227

Investment & Development  
id@stowbrothers.com  
0208 520 6220

Property Maintenance  
propertymanagement@stowbrothers.com  
0203 325 7228

STOWBROTHERS.COM  
@STOWBROTHERS





#### IF YOU LIVED HERE...

Step from your peaceful new mews through your own front door for a smart hallway with engineered hardwood underfoot and built-in storage to your left. Your spacious kitchen and reception room is over 200 square feet, with sliding doors opening directly onto your private garden. Out here a large patio descends to a smart timber deck, perfect spot for a morning coffee in the sun.

The kitchen area is finished in a contemporary monochrome palette with downlit cabinets, integrated appliances, and marbled worktops. Elsewhere both bedrooms are solid doubles, with the principal sleeper features an en suite

shower room, fully tiled in smoky grey. Bedroom two also gives onto the garden, and your family bathroom is another sleek, boutique affair, with a rainfall shower over the tub.

You're tucked away in a peaceful cul de sac between Highams Park and Chingford. It's around a twenty minute walk to Highams Park overground, station, for direct twenty three minute connections to Liverpool Street and the City. The woodlands of Ainslie Wood and Larks Wood are right on your doorstep, while nearby favourites the Larky, and The Stag and Lantern Micropub are your go to spots for dinner and drinks.



#### WHAT ELSE?

- Chingford Memorial park, with tennis courts and playgrounds, is just five minutes on foot for weekend walks or morning runs.
- Double glazing throughout ensures peace, privacy and energy efficiency.
- Heading to the West End? Walthamstow Central is just two stops and five minutes from Highams Park, for a quick swap to the Victoria line.

REQUEST A VIEWING  
0203 397 9797

FOLLOW US ➔ @STOWBROTHERS  
STOWBROTHERS.COM