

## SHERNHALL STREET, WALTHAMSTOW

£3,400 Per Calendar Month  
 4 Bed House



### Features:

- SHORT LET
- 3 - 4 MONTHS
- Available January
- All Bills Included
- Four Bedroom House
- High Spec Finish
- Walthamstow Village Outskirts
- Short Walk to Wood Street Station
- Walking Distance to Walthamstow Central

### SHORT LET

Enviably sat on the borders of Walthamstow Village, this beautifully presented, four bedroom, family home is full of light, space and quality finishes. You have a tranquil rear garden and a wonderful array of dining and wine options.

It's less than ten minutes on foot to Wood Street station, where Overground trains connect you to Liverpool Street in twenty minutes.

REQUEST A VIEWING  
 0203 397 9797

**E11, E7, E12 & E15**  
 hello11@stowbrothers.com  
 0203 397 2222

**E4 & N17**  
 hello4@stowbrothers.com  
 0203 369 6444

**E17 & E10**  
 hello17@stowbrothers.com  
 0203 397 9797

**E18 & IG8**  
 hello18@stowbrothers.com  
 0203 369 1818

**E8, E9, E5, N16, E3 & E2**  
 hellohackney@stowbrothers.com  
 0208 520 3077

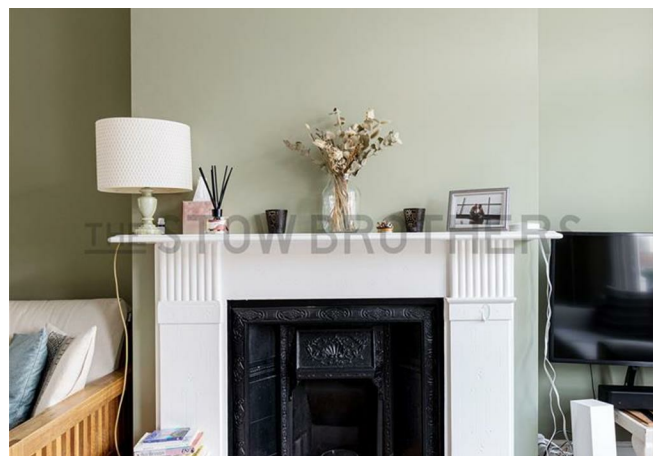
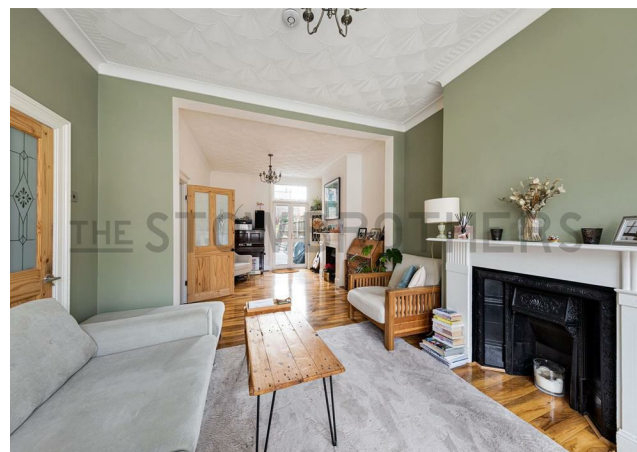
**New Homes**  
 newhomes@stowbrothers.com  
 0203 325 7227

**Investment & Development**  
 id@stowbrothers.com  
 0208 520 6220

**Property Maintenance**  
 propertymanagement@stowbrothers.com  
 0203 325 7228

STOWBROTHERS.COM  
 @STOWBROTHERS





#### IF YOU LIVED HERE...

Your enormous, 315 square foot reception room has exquisite, blonde timber flooring throughout, a bright bay window to the front and two ornate vintage hearths sat either side of an open archway. French doors to the rear provide direct access to your garden, but first let's explore further along your entrance hall, past the utility room, ground floor WC and the entrance to your 130 square foot cellar. At the end of the hallway, you'll enter your immaculate, 265 square foot, kitchen diner. An artful arrangement of matt navy cabinets, white granite worktops, stainless steel integrated appliances and designer pendulum lighting.

Two bright skylights flood the dining area with natural light, while concertina doors open onto a smooth slate patio and lush, green lawn. Back inside, you'll head upstairs to find a huge, 235 square foot principal bedroom with another bright bay and an original

sash window overlooking the front of your home. The principal, second and third sleepers all feature handsome vintage fireplaces, while the fourth bedroom has garden and rooftop views. Completing the setup of this wonderful family home, you'll find a contemporary family bathroom decked out in floor to ceiling, oversized marble tilework, ebony fixtures and fittings and a stylish mixer shower over the tub.

You have the beating heart of Walthamstow Village right on your doorstep. Only a stone's throw away, you'll find yourself in the intriguingly converted neon warehouse gallery, God's Own Junkyard. On the same site there's also a fantastic gin and liqueur bar, Mother's Ruin, where you can soak up speakeasy vibes and sample innovative cocktails. If you feel like getting out into nature, it's only a fifteen minute walk to the Forest Roise entrance to Epping Forest, where you have endless opportunities to explore open nature from Hollow Ponds to Leyton Flats.



#### WHAT ELSE?

- Step out of your front door and directly opposite you'll find a wonderful restaurant, Arte E Pasta. As the name suggests, here you'll find authentic Italian cuisine within a modern, colourful converted warehouse.
- Within a mile of your home, there are twenty three primary and secondary schools to choose from. Holy Family Catholic Secondary and Our Lady And St George's Catholic Primary are the closest, both just a three minute walk away.
- An easy eight minute stroll down Shernall Street onto Eastern Road will bring you to Urban Bites cafe. A favourite amongst locals for its impressive brunches and friendly service.

REQUEST A VIEWING  
0203 397 9797

FOLLOW US → @STOWBROTHERS  
STOWBROTHERS.COM