

Hallway

Reception  
16'4" x 11'6"

Bedroom  
11'6" x 10'6"

Bathroom  
8'4" x 6'7"

Kitchen  
10'2" x 10'0"



**E11, E7, E12 & E15**  
hello11@stowbrothers.com  
0203 397 2222

**E4 & N17**  
hello4@stowbrothers.com  
0203 369 6444

**E17 & E10**  
hello17@stowbrothers.com  
0203 397 9797

**E18 & IG8**  
hello18@stowbrothers.com  
0203 369 1818

**E8, E9, E5, N16, E3 & E2**  
hellohackney@stowbrothers.com  
0208 520 3077

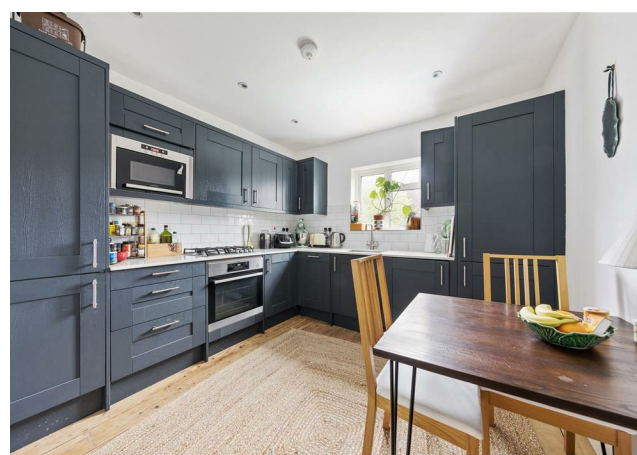
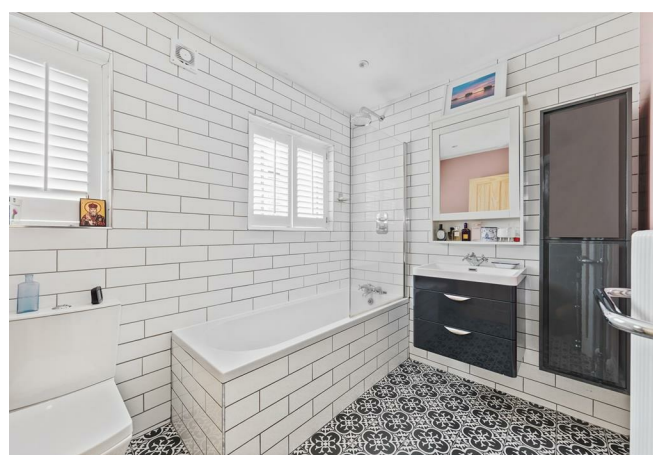
**New Homes**  
newhomes@stowbrothers.com  
0203 325 7227

**Investment & Development**  
id@stowbrothers.com  
0208 520 6220

**Property Maintenance**  
propertymanagement@stowbrothers.com  
0203 325 7228

STOWBROTHERS.COM  
@STOWBROTHERS

REQUEST A VIEWING  
0203 397 9797



IF YOU LIVED HERE...

You can unlock the door and feel immediately at home thanks to the stunning and thoughtful design and decor throughout this apartment. You have sumptuous wooden flooring in your living room, which is lovely and bright thanks to the characterful arched windows. The fireplace in this room - which is cast iron with tiled hearth - is a lovely retained feature, and you have sage green accents to the walls creating a perfectly calm atmosphere.

Your kitchen is brilliantly appointed, with ample units styled in an on-trend navy blue. You have space for a good sized dining table in here, offering a social eat-in kitchen option. Your double bedroom has a snugly grey carpet underfoot, and a large built-in storage cupboard which you are sure to find a very handy addition. You will love the stylish and pristine bathroom, with metro tiling to the walls and bath, and gorgeous Portuguese style tiling to the floors - this room really is luxurious.

Out and about, you are in the perfect location to explore the best of our beloved borough. Head to Orford Road in Walthamstow Village where you will find a whole host of independent shops and restaurants. We recommend Orford Road Tapas for authentic Spanish food and delicious cocktails, head out back to their quaint courtyard garden for some al-fresco dining. The High Street in Walthamstow

Central has a bustling and eclectic street market - one of the longest in Europe! And the Central17 development offers a wide range of shopping outlets, a gym and restaurants.

WHAT ELSE?

- Walthamstow Central overground is on the Victoria Line, which gets you into the West End in under 20 minutes. You are also in close proximity to Walthamstow Queens Road on the overground network - head up to Gospel Oak from here and you alight the train at the southernmost point of Hampstead Heath, right by the lido.
- You have world class entertainment on your doorstep, with the nine screen Empire Cinema a stone's throw away. We are also eagerly awaiting the opening of the new Soho Theatre, Walthamstow which is set to open its doors with a programme of events in early 2024.
- Head down the market and over to Walthamstow Wetlands and Hackney Marshes for some breathtaking green spaces, a welcome break from the busy metropolis and only 30 minutes on foot, or 10 minutes by bike.



A WORD FROM THE OWNER...

'One of my favourite things about living in this flat has always been the light. The morning sunshine pouring in to the kitchen whilst making that all-important first cup of tea, and the way it swung around to hit the Living room in the afternoon. These four walls have provided such a safe haven for me for many years, and given how close it is to the hustle and bustle of Central Walthamstow and the Village, it is stunningly quiet and peaceful. If you are looking for a spot that gives you easy access to busy city living, and the chance to escape out to the country in 20 minutes, I think this flat can offer you the home you're looking for.'

REQUEST A VIEWING  
0203 397 9797

FOLLOW US → @STOWBROTHERS  
STOWBROTHERS.COM