



Cottage

**4 CHAPEL STREET,  
CARLETON, BD23 3HE**

PCM

**£725 PCM**

#### FEATURES

- Two Bedrooms
- Modern Kitchen
- Rear Yard
- Village Location
- Living Room
- Unfortunately No Pets



# 2 Bedroom Cottage located in Carleton

A cottage located in the popular village of Carleton with two bedrooms, bathroom, living room and kitchen. Benefitting from a lovely rear yard.

Call us on

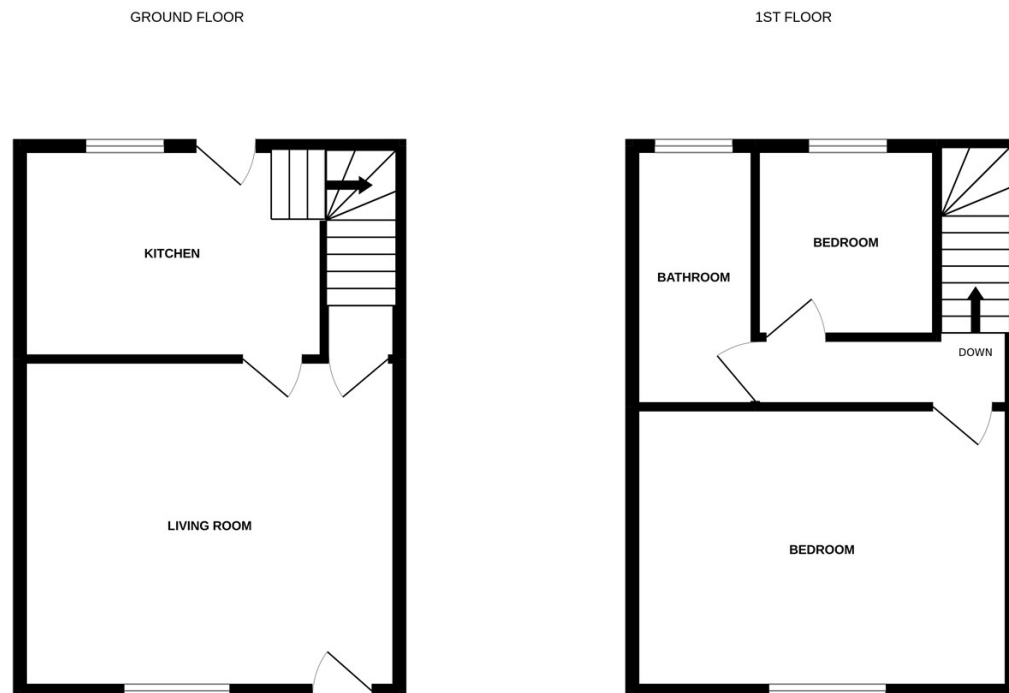
01756 799163

[sales@carlingjones.co.uk](mailto:sales@carlingjones.co.uk)

<https://carlingjones.co.uk/>

Council Tax Band

B



| Energy Efficiency Rating                    |         |                         |
|---|---------|-------------------------|
|   | Current | Potential               |
| Very energy efficient - lower running costs |         |                         |
| (92 plus) A                                 |         | 86                      |
| (81-91) B                                   |         |                         |
| (69-80) C                                   | 67      |                         |
| (55-68) D                                   |         |                         |
| (39-54) E                                   |         |                         |
| (21-38) F                                   |         |                         |
| (1-20) G                                    |         |                         |
| Not energy efficient - higher running costs |         |                         |
| England & Wales                             |         | EU Directive 2002/91/EC |

Agents Note: Whilst every care has been taken to prepare these particulars, they are for guidance purposes only. All measurements are approximate and are for general guidance purposes only and whilst every care has been taken to ensure their accuracy, they should not be relied upon and potential buyers are advised to recheck the measurements.

Whilst every attempt has been made to ensure the accuracy of the floorplan contained here, measurements of doors, windows, rooms and any other items are approximate and no responsibility is taken for any error, omission or mis-statement. This plan is for illustrative purposes only and should be used as such by any prospective purchaser. The services, systems and appliances shown have not been tested and no guarantee as to their operability or efficiency can be given.  
Made with Metropix ©2022

