

HoldenCopley

PREPARE TO BE MOVED

Maryland Court, Stapleford, Nottingham NG9 8LP

£700 PCM

Maryland Court, Stapleford, Nottingham NG9 8LP



APARTMENT LIVING...

This first-floor maisonette offers generous living space and convenient amenities for comfortable living. Located in the sought-after area of Stapleford, it presents an ideal opportunity for couples or working professionals seeking a well-connected locale. The property features two bedrooms, each offering ample space. The neutral decor throughout provides a versatile canvas for personalization. Upon entry, you're greeted by an inviting hallway leading to a spacious living room adorned with a charming fireplace, perfect for relaxation. Adjacent to the living room is a modern fitted kitchen, equipped with all the essentials for culinary endeavours. The two double bedrooms provide comfortable accommodation and are complemented by a three-piece bathroom suite. Externally, the property is accessed via cast iron stairs, adding to its unique character. With immediate availability and offered unfurnished, this maisonette presents an opportunity for occupants to move in seamlessly. Its prime location offers easy access to a range of amenities including shops, eateries, and transport links to Nottingham and Derby City Centres, making it an attractive prospect for those seeking convenience and comfort in their living space.

AVAILABLE NOW!





- First Floor Maisonette
- Two Double Bedrooms
- Modern Fitted Kitchen
- Spacious Living Room With Feature Fireplace
- Three Piece Bathroom Suite
- Un-Furnished
- On Street Parking Available
- Popular Location
- 360 Virtual Tour
- Available Now





ACCOMMODATION

Entrance Hall

10'7" x 9'9" (3.23m x 2.98m)

The entrance hall has tiled flooring, coving to the ceiling, beading to the walls, smoke alarm, in-built storage cupboard, radiator and a single composite door providing access into the accommodation

Kitchen

9'3" x 8'11" (2.83m x 2.74m)

The kitchen has tiled flooring, coving to the ceiling, recessed ceiling spotlights, a range of fitted wall and base units with fitted worksurfaces, two stainless steel sinks with a drainer and mixer taps, wall mounted combi boiler, integrated oven with gas hobs and unit extractor fan, space and plumbing for a washing machine and dishwasher, space for an undercounter fridge and freezer, radiator and wooden window

Living Room

16'3" x 9'9" (4.96m x 2.99m)

The living room has wood effect flooring, coving to the ceiling, TV point, feature fireplace with a gas fire with a marble effect surround, hearth and mantelpiece, radiator and a wooden window

Master Bedroom

9'10" x 13'4" (3.00m x 4.08m)

The main bedroom has carpeted flooring, coving to the ceiling, beading to the walls, radiator and double glazed windows to the rear elevation

Bedroom Two

10'3" x 10'7" (3.13m x 3.24m)

The second bedroom has wood effect laminate flooring, coving to the ceiling, radiator and wooden window

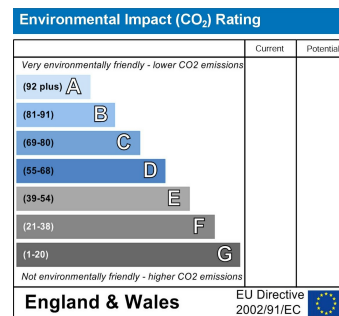
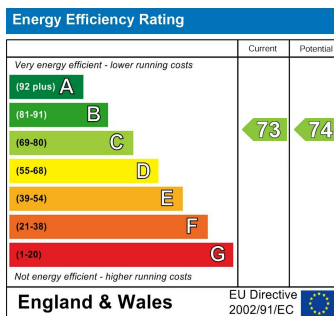
Bathroom

6'5" x 5'6" (1.97m x 1.68m)

The bathroom has tile effect flooring, partially tiled walls, coving to the ceiling, recessed ceiling spotlights, panelled bath with mixer taps and shower over, pedestal washbasin with taps, low level dual flush WC, extractor fan, wall mounted towel rail and a wooden window

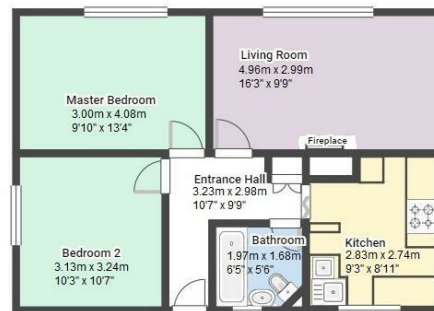
OUTSIDE

Outside is cast iron steps leading to the accommodation



Maryland Court, Stapleford, Nottingham NG9 8LP

HoldenCopley
PREPARE TO BE MOVED



FLOORPLAN IS FOR ILLUSTRATIVE PURPOSES ONLY

All measurements walls, doors, windows, fittings and appliances, their sizes and locations are an approximate only. They cannot be regarded as being a representation by the seller nor their agent and is for identification only. Not to scale.

© HoldenCopley

0115 8969 800

26 High Street, Arnold, Nottinghamshire, NG5 7DZ

info@holdencopley.co.uk

www.holdencopley.co.uk

Agents Disclaimer: HoldenCopley, their clients and employees are not authorised to make or give any representations or warranties in relation to the property either here or elsewhere, either on their own behalf or on behalf of their client or otherwise. They assume no responsibility for any statement that may be made in these particulars. These particulars do not form part of any offer or contract and must not be relied upon as statements or representations of fact. 2: Any areas, measurements or distances are approximate. The text, photographs and plans are for guidance only and are not necessarily comprehensive. It should not be assumed that the property has all necessary planning, building regulation or other consents and HoldenCopley have not tested any services, equipment or facilities. Purchasers must make further investigations and inspections before entering into any agreement.