

HoldenCopley

PREPARE TO BE MOVED

Lyndhurst Road, Sneinton, Nottinghamshire NG2 4FW

£895 PCM

Lyndhurst Road, Sneinton, Nottinghamshire NG2 4FW



WELL-PRESENTED THROUGHOUT...

Discover the perfect blend of charm, space, and convenience in this three-bedroom mid-terraced house, spanning across three beautifully presented floors. Nestled in a popular location, this delightful home offers easy access to a plethora of local amenities, excellent transport links, and seamless connectivity to the City Centre. Internally the ground floor boasts a comfortable and inviting living room, providing an ideal space for relaxation and gatherings. Adjacent to it, you'll find a fitted kitchen, perfectly designed to cater to your culinary needs offering a range of appliances with a separate convenient utility room, adding a practical touch to daily living along with access to the cellar, providing great storage space. To the first floor you'll discover a spacious master bedroom, exuding tranquillity and comfort. Alongside it, a cosy single bedroom awaits. The well-appointed bathroom on this floor ensures a rejuvenating experience, featuring modern fixtures and fittings. Ascending to the second floor, you'll be delighted to find a further double bedroom, offering versatility and privacy for your family. Outside to the front is availability for on street parking and to the rear of the property lies a charming low maintenance courtyard-style garden, perfect for Summer!

AVAILABLE NOW!





- Mid-Terraced House
- Three Bedrooms
- Good-Sized Living Room
- Contemporary Style Kitchen With Separate Utility Room
- Cellar
- Three-Piece Bathroom Suite
- Rear Enclosed Garden
- On Street Parking Available
- Popular Location
- 360 Virtual Tour





GROUND FLOOR

Living Room

11'5" x 11'1" (3.49m x 3.40m)

The living room has a UPVC double-glazed window to the front elevation, coving to the ceiling, a radiator, wood-effect flooring, a recessed chimney breast alcove with a feature fireplace, radiator and a single composite door providing access into the accommodation

Kitchen

12'4" x 11'2" (3.77m x 3.41m)

The kitchen has a range of fitted base units with wood-effect worktops, a stainless steel sink with a mixer tap and drainer, free-standing cooker with electric hobs, splashback and an over hood extractor fan, fridge freezer, space for a dining table and chairs, wood-effect flooring, a vertical radiator, access to the cellar and a UPVC double-glazed window to the rear elevation

Utility Room

5'9" x 7'1" (1.77m x 2.17m)

The utility room has fitted wall units, wood-effect flooring, space and plumbing for a washing machine, space for a tumble-dryer, tiled splashback, a wall-mounted BAXI boiler, wood-effect flooring, a radiator, a UPVC double-glazed window to the side elevation and a single UPVC door to access the rear garden

BASEMENT LEVEL

Cellar

The cellar has electrical points, courtesy lighting and offers great storage space

FIRST FLOOR

Landing

5'4" x 9'0" (1.63m x 2.75m)

The landing has carpeted flooring and stairs, a radiator, smoke alarm and provides access to the first floor accommodation

Master Bedroom

11'5" x 11'2" (3.48m x 3.41m)

The main bedroom has a UPVC double-glazed window to the front elevation, carpeted flooring and a radiator

Bedroom Two

5'8" x 9'9" (1.74m x 2.99m)

The second bedroom has a UPVC double-glazed window to the rear elevation, carpeted flooring and a radiator

Bathroom

5'2" x 9'10" (1.59m x 3.00m)

The bathroom has a low level flush W/C, a pedestal wash basin with taps, a panelled bath with an overhead shower fixture and mixer taps, radiator, partially tiled walls, wood-effect flooring and a UPVC double-glazed obscure window to the rear elevation

SECOND FLOOR

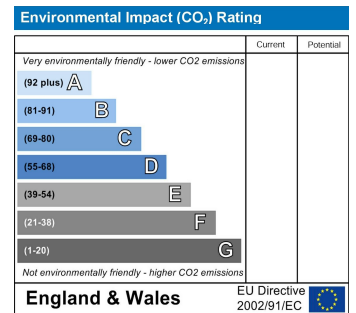
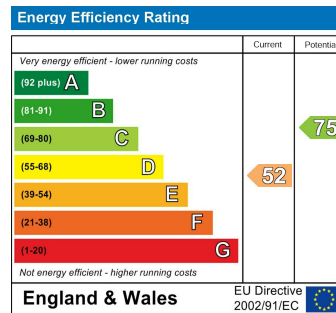
Bedroom Three

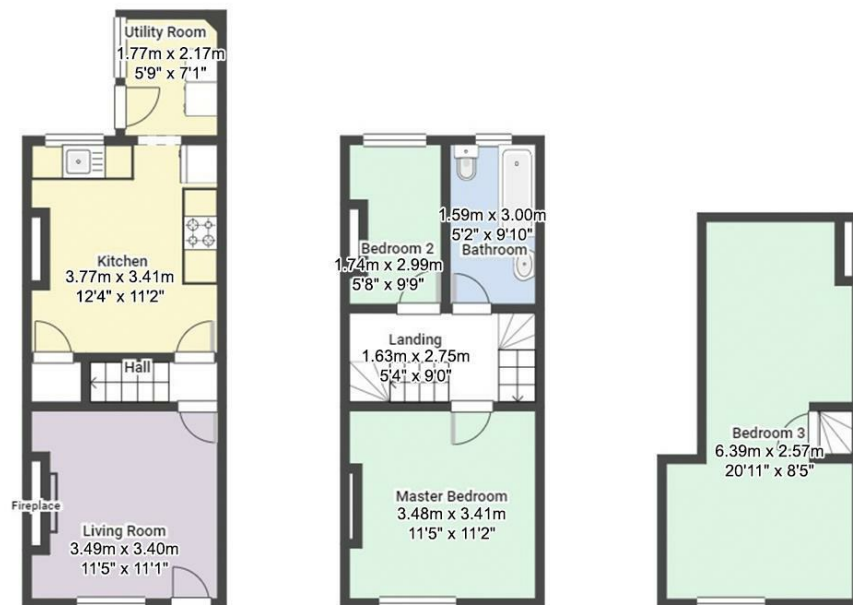
20'11" x 8'5" (6.39m x 2.57m)

The third bedroom has carpeted flooring, radiator, in-built storage cupboard and a Velux window

OUTSIDE

Outside to the rear is an enclosed low maintenance courtyard style garden with a wall surround and gated access





FLOORPLAN IS FOR ILLUSTRATIVE PURPOSES ONLY

All measurements walls, doors, windows, fittings and appliances, their sizes and locations are an approximate only. They cannot be regarded as being a representation by the seller nor their agent and is for identification only. Not to scale.
© HoldenCopley

0115 8969 800

26 High Street, Arnold, Nottinghamshire, NG5 7DZ

info@holdencopley.co.uk

www.holdencopley.co.uk