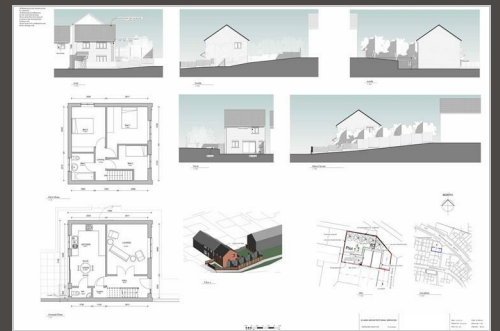


HoldenCopley

PREPARE TO BE MOVED



Ringstead Walk, Bestwood Park, NG5 5QE

Guide Price £70,000 - £80,000

PLANNING APPROVED FOR DETACHED DWELLING...

Nestled within a convenient location, lies a captivating plot of land awaiting transformation. With the prestigious seal of approval from Nottingham City Council, planning permission (ref: 23/01205/PFUL3, PP-12287629) has been secured for the construction of a two-storey detached house. This parcel of land represents a golden opportunity for astute investors, seasoned builders, or dream-home seekers alike. With the canvas cleared and the vision approved, seize the chance to make your mark in this coveted area.

- Plot Of Land
- Close To Local Amenities
- Great Investment Opportunity
- Planning Approved For Two-Storey Detached House
- No Upward Chain
- Proposed Plans Available

<https://www.holdencopley.co.uk>